

YOUR PLACE YOUR PLAN.

Winchester District Local Plan

Winchester District Local Plan 2040

Additional Minor Modifications

January 2026



Winchester
City Council

Additional Minor Modifications to the submission Winchester Local Plan 2020-2040

This document sets out proposed additional modifications to the Local Plan. These are minor changes such as addressing typographical errors or factual updates. It does **not** set out modifications considered necessary to make the Plan sound.

Modifications considered necessary to make the Plan sound are called “Main Modifications” and are set out in a separate document. The Main Modifications were published for formal consultation as part of the Local Plan Examination process, and responses to that consultation have been passed to the Local Plan Inspector for her to consider.

The Additional Modifications included in this document are not considered necessary to make the Plan sound. Most of the Additional Minor Modifications were published in a separate consultation at the same time as the proposed Main Modifications, and response to that consultation have been considered by the Council. The results of that consultation and the Councils response are set out in a separate document.

Since those consultations, the Council has identified a number of further Additional Minor Modifications it intends to make to the Plan document. Again, these are considered minor changes not required for soundness.

This document sets out all of the Additional Minor Modifications the Council intends to make, in Plan order. For clarity, those additional modifications which were published for consultation have their AM reference number included. Those further Additional Minor Modifications identified after the consultations were carried out are set out in **red text**.

In all cases, additions to the Plan are indicated using **bold** and underlined text and deletions are shown using ~~striketrough~~.

Additional Modification Reference/ Paragraph number	Proposed Modification	Reason
Front cover	<p>Amend front cover</p> <p>Proposed Submission Local Plan (Regulation 19) 2020 – 2040</p>	Additional modification change – this change has been added following further reading of the plan. (As detailed in AM18)
Foreword Para 1.4/1.5	<p>Welcome to Winchester City Council's Proposed Submission Local Plan (Regulation 19).</p> <p>Deadline for response to this Proposed Submission Local Plan is 23:59 hrs on Sunday 13 October 2024</p> <p>Amend text in para 1.4</p> <p>At the time of writing, the Government is consulting on a new National Planning Policy Framework (NPPF) and new requirements on how Local Plan need to be prepared in 30 months. with considerably higher housing requirements for the district and new rules for how Local Plans are decided. Continuing with this Local Plan, alongside a commitment to commence plan-making in the new plan-making system at the earliest opportunity to address any shortfall in</p> <p>Amend text in para 1.5</p> <p>The Proposed Submission Local Plan (Regulation 19) is the final version of the Local Plan before it is submitted to the Secretary of State and the Planning Inspectorate for Examination in Public. All the feedback that we have received from our earlier award-winning engagement on the Strategic Issues & Priorities, and the Regulation 18 and Regulation 19 consultations draft Local Plan consultation has helped us set a clear direction for this Local Plan of travel for the contents of this Proposed Submission Local Plan (Regulation 19). Your input on this next stage of the process will be equally important. We look forward to hearing your views</p>	Additional modification changes – these have been added following further reading of the plan. (As detailed in AM18)

Additional Modification Reference/ Paragraph number	Proposed Modification	Reason
Para 2.7	When it has been adopted, The Winchester District Local Plan will supersedes the existing Local Plan Part 1 – Joint Core Strategy (March 2013), Local Plan Part 2 – Development Management Policies and Site Allocations (April 2017) and the Gypsy, Traveller and Travelling Showperson Development Plan Document (February 2019).	Additional modification changes – these have been added following further reading of the plan. (As detailed in AM18)
AM1 (Policy SP2)	<p>Amend para. 3.8 as follows</p> <p>The Plan's vision and objectives have been developed into a spatial planning strategy covering the three main spatial areas of the district. This is set out in Policy SP2, along with the broad requirements for development in the Plan area.</p> <p>Development proposals will be supported which reflect these principles. Further guidance and expectations are set out in the other policies in this Local Plan, and supporting evidence such as the Infrastructure Delivery Plan and other documents listed after para. 2.16 (page 10) should be referred to when considering how to meet these requirements. Where it is understood there are likely to be specific requirements or issues which should be discussed with third parties such as infrastructure providers, they are identified <u>in</u> the allocations policies and supporting text.</p>	To correct a typographical error and improve clarity
AM2 (Policy CN3)	<p>Amend supporting text as follows:</p> <p>4.20 As well as considering how new development will need to address climate change and adaptation as part of the design process (Policy CN1) it is important that the Local Plan addresses the future environmental impact of new residential development in terms of the amount of carbon emissions that are associated with the development including specifically CO² <u>CO2</u> emissions. This is important as CO² <u>CO2</u> emissions are one of the main greenhouse gases that contribute to global warming.</p> <p>4.24 The Council recognises that improving energy efficiency standards when it comes to conversions and extensions can in some situations be more problematic than a</p>	Comments from Historic England

Additional Modification Reference/ Paragraph number	Proposed Modification	Reason
	<p>new build. However, in the case of extensions, a bigger home means more space to heat and more lighting which could increase the carbon dioxide (CO² CO2) emissions. In order to ensure that these proposals also assist with the Council's climate emergency target, as part of the design process, applicants will be expected to demonstrate what opportunities have been explored and taken to improve the energy efficiency and performance of a building especially when this involves a conversion of non-residential premises to a residential use.</p>	
Para 2.12	<p>Amended paragraph 2.12</p> <p>Whilst a number of the above factors deliver wider environmental and other benefits they also provide new challenges which affect development and need to be accommodated in the plan. Generally these factors add to the cost of development – even where they might reduce ongoing costs for occupants – so it is necessary to balance all of these requirements and make choices about what to prioritise in the Local Plan. In recognition that there is a climate emergency, which sits at the heart of the Local Plan, the proposed plan embeds carefully designed new energy efficiency standards developed by the Low Energy Transformation Initiative (LETI). The inclusion of these energy efficient standards will ensure that most new residential developments permitted under the plan are built to be net-zero carbon. The advantage to occupiers will be that the running costs of these homes will be much lower than homes that are built to the current Building Regulations. This also means that new build homes will not need to be retrofitted when for example, the use of gas boilers is phased out by the government in 2025.</p>	Additional modification change – this change has been added following further reading of the plan
Para 2.16	<p>The Local Plan is supported by an evidence base covering matters such as housing, design, economy, the environment, recreation and leisure, transport and infrastructure. This has been informed by public consultation that took place in 2018, 2021, and more recently during 2022, in relation to the Regulation 18 Consultation and in 2024 for the Regulation 19 Consultation. All the evidence base and the feedback that we have received has been used to help us inform and develop the Local Plan.</p>	Additional modification changes – these have been added following further reading of the plan. (As detailed in AM18)
Para 2.18	<p>Amend Para 2.18</p> <p>All the comments received have been carefully considered in the preparation of the</p>	Additional modification changes – these have been added following further

Additional Modification Reference/ Paragraph number	Proposed Modification	Reason
	Proposed Submission Local Plan (Regulation 19), which was examined by an independent Inspector between April and June 2025 and subsequently subject to a Main Modifications public consultation from November 2025 to January 2026.	reading of the plan. (As detailed in AM18)
AM3 (Policy D1)	<p>Amend supporting text as follows:</p> <p>5.47 Winchester Town Forum, supported by a team of consultants, prepared a vision document for the built up area Winchester town and its immediate surroundings for the period up to 2030. The project began in February 2020 and has involved a number of working groups, dedicated social media channels and 1-2-1 interviews with residents and other stakeholders. The process has been recorded in a number of handbooks as follows which constitute the new Vision for Winchester. Details can be viewed at www.onegreatwin.com https://www.winchester.gov.uk/no-listing/hidden-links/winchester-vision-2030</p> <p>Table on p.73-74 Delete the following from row “Public Places” – Open Space Improvement Action Plan 2022</p>	<p>Existing link no longer works. Documents now moved to WCC website.</p> <p>For clarification purposes</p>
AM4 (Policy D7)	<p>Amend Policy D7 (Development Standards) as follows:</p> <p>Separate the final sentences of criterion vi to form a separate paragraph (not a new criterion) as follows -</p> <p>vi. Construction phase pollution impacts for large or prolonged developments.</p> <p>The report should identify and detail any mitigation measures that are necessary to make the development acceptable in respect of the adverse impacts on health and quality of life. The Local Planning Authority may require specific mitigation measures to be undertaken in order to make developments acceptable in terms of matters relating to pollution.</p>	To correct a typographical error and improve clarity

Additional Modification Reference/ Paragraph number	Proposed Modification	Reason
AM5 (Policy T1)	<p>Amend supporting text as follows :</p> <p>Para. 6.5</p> <p>Add footnote to third bullet point as follows –</p> <ul style="list-style-type: none"> designed and delivered in accordance with the Hampshire County Council Highway and Traffic Technical Guidance documents and policies, unless otherwise agreed with the County Council at the time.¹ <p><u>¹Technical guidance notes Transport and roads Hampshire County Council</u></p> <p>Para. 6.16</p> <p>In order to ensure that the Local Plan accords with the guidance in the NPPF and supports the aims set out in the council's climate emergency, Policy T1 is an overarching strategic transport / travel policy. The policy sets out the council's aspirations in respect of promoting sustainable and active travel above the use of the private car.</p>	<p>Signposting to the relevant document</p> <p>To clarify the status of the NPPF</p>
Para 7.23	<p>7.23 "In order to ensure that the Local Plan accords with the guidance in the NPPF and supports the aims set out in the council's nature emergency declaration the preferred approach is to include an overarching strategic policy that sets out the council's aspirations in respect of promoting the protection and enhancement of biodiversity and all aspects of the natural environment. Measures <u>(insert footnote ref)</u> could include hedgehog highways, swift bricks, bat bricks / boxes and appropriate planting.</p> <p><u>Footnote X Further details and guidance on wildlife friendly features can be viewed at para 17 Natural environment - GOV.UK</u></p> <p>Delete 'emerging' as the Hampshire LNRS was published in December 2025.</p>	<p>To add clarity to the wording in the Local Plan in response to a representation from Swifts Local Network: Swifts and Planning Group</p>

Additional Modification Reference/ Paragraph number	Proposed Modification	Reason
	<u>The emerging Hampshire Local Nature Recovery Strategy includes maps of the most valuable areas for wildlife, opportunities to improve nature in the future and local priorities for nature recovery.</u>	Factual update.
Para 7.115	Delete 'when published' as the Hampshire LNRS was published in December 2025. <u>The Local Nature Recovery Strategy for Hampshire should, when published, be used to guide the location and design of nutrient mitigation schemes to ensure that they make positive contribution towards the Local Nature Recovery Network, in particular, the identified priorities for nature recovery as set out in Local Nature Recovery Strategy</u>	Factual update.
AM6 (Policy NE5)	Amend Policy NE5 (Biodiversity) as follows: Addition of a footnote for criteria ix: ix. Provides up to date information, evidence and relevant assessments or surveys (in line with CIEEM guidance ¹); and <u>¹CIEEM Guidelines for Ecological Impact Assessment in the UK and Ireland</u>	Signposting to the relevant document
AM7 (Policy NE10)	Supporting text- Revise the second sentence of paragraph 7.78 as follows – The importance of retaining open spaces has been highlighted through the process of consulting local communities on their needs and aspirations, but no Local Green Space designations have been suggested.	To improve clarity
Policy NE17	Move para 7.118 to after 7.120 (paras 7.117, 7.119 and 7.120 focus on ground water and water courses) consequential renumbering of paragraphs. <u>7.118 The Solent Wader and Brent Goose Strategy (SWBGS) relates to internationally important brent goose and wading bird populations within and</u>	To add clarity and in response to representations from Natural England.

Additional Modification Reference/ Paragraph number	Proposed Modification	Reason
	<p><u>around the Special Protection Areas and Ramsar wetlands of the Solent Coast (Hampshire, Isle of Wight and West Sussex).</u> A small number of Solent Wader and Brent Goose Strategy (SWBGS) sites (“functionally linked land”) are identified <u>in the Winchester District</u> around the Upper Hamble as supporting high tide roosts of birds from the Solent and Southampton SPA/Ramsar. <u>SWBG</u> The Solent Wader and Brent Goose mapping is available on Solent Waders & Brent Goose Strategy – coastal bird conservation, waders and brent geese data and mapping solentwbgs.wordpress.com. <u>There is a minimum requirement of one year’s ecological survey to confirm the classification of a site (three years where classification is disputed).</u></p>	
AM8 (Policy H1)	<p>Amend third sentence of para 9.18 as follows:</p> <p>9.18 (Assessment of Windfall Trends and Potential 2021).</p>	<p>Typo</p>
AM9 (Policy H12)	<p>Amend first Paragraph of Policy H12 as follows:</p> <p>Planning permission will be granted for pitches to meet gypsy and traveller accommodation needs for the area covered by this Plan, estimated at approximately 91 gypsy traveller pitches and 35 travelling showpersons’ plots from April 2022 to March 2040. Policies H14 – H18 H17 facilitate adequate provision and consent will be granted for pitches and plots which accord with these and other relevant policies, subject to the following criteria:</p>	<p>To make it clear that the paragraph refers to delivery of all sites in the Plan, including Tynfield, Whiteley which is currently allocation H18.</p>
AM10 (Policy H13)	<p>Amend, paragraph 9.89, paragraph 9.90 and Table 5 as follows:</p> <p>9.89 The results of the engagement together with the evidence studies have informed the proposed strategy to meet traveller needs, which involves:</p> <ul style="list-style-type: none"> • Safeguarding existing permitted and lawful sites (policy H13); • Assessing the scope to intensify or expand existing family sites (policies H14, H15); • Specific site allocation policies for larger or more complex sites (policies H16, H18 H17); and 	<p>To make it clear that the paragraphs and table refer to delivery of all sites allocated in the Plan, including Tynfield, Whiteley which is currently allocation H18.</p>

Additional Modification Reference/ Paragraph number	Proposed Modification	Reason															
	<p>• Providing for the intensification or limited expansion of existing lawful sites, where appropriate (policies H14, H15). The identified needs are expected to be provided through the following sources of supply, with the details set out in the policies below.</p> <p>Amendment to table H5 – delivery of Traveller Pitches/Plots</p> <table border="1" data-bbox="461 507 1487 1027"> <thead> <tr> <th data-bbox="461 507 801 580">Expected source of sites</th><th data-bbox="813 507 1140 580">Gypsy and Traveller Pitched</th><th data-bbox="1151 507 1487 580">Travelling Showpersons Plots</th></tr> </thead> <tbody> <tr> <td data-bbox="461 588 801 804">Site identified in GTAA Pitch Delivery Assessment and Gypsy and Traveller Topic Paper (policies H14 and H15)</td><td data-bbox="813 588 1140 804">68</td><td data-bbox="1151 588 1487 804">17</td></tr> <tr> <td data-bbox="461 812 801 916">Supply from site allocations (policies H16, H17H18)</td><td data-bbox="813 812 1140 916">30</td><td data-bbox="1151 812 1487 916">0</td></tr> <tr> <td data-bbox="461 924 801 987">Supply from windfall (policy H15)</td><td data-bbox="813 924 1140 987">30</td><td data-bbox="1151 924 1487 987">0</td></tr> <tr> <td data-bbox="461 995 801 1027">Total</td><td data-bbox="813 995 1140 1027">128</td><td data-bbox="1151 995 1487 1027">17</td></tr> </tbody> </table> <p>Paragraph 9.90 9.90 Policy H12 sets out the criteria that will be applied to applications for gypsy and traveller pitches or plots. Such applications may be permitted in accordance with policies H13 – H17 H18 and the criteria of policy H12 will be applied in addition to any specific requirements of those policies. Policy H12 applies to all ethnic travellers.</p>	Expected source of sites	Gypsy and Traveller Pitched	Travelling Showpersons Plots	Site identified in GTAA Pitch Delivery Assessment and Gypsy and Traveller Topic Paper (policies H14 and H15)	68	17	Supply from site allocations (policies H16, H17 H18)	30	0	Supply from windfall (policy H15)	30	0	Total	128	17	
Expected source of sites	Gypsy and Traveller Pitched	Travelling Showpersons Plots															
Site identified in GTAA Pitch Delivery Assessment and Gypsy and Traveller Topic Paper (policies H14 and H15)	68	17															
Supply from site allocations (policies H16, H17 H18)	30	0															
Supply from windfall (policy H15)	30	0															
Total	128	17															
AM11 (Policy W5)	<p>Amend criterion xii of Policy W5 (Bushfield Camp) as follows:</p> <p>The proposals retain features of heritage significance and incorporates them into any redevelopment of the site as part of a wider heritage trail that celebrates the site's</p>	Comments from Historic England															

Additional Modification Reference/ Paragraph number	Proposed Modification	Reason
	military history and place of enjoyment by the general public to understand and appreciate how the site has evolved;	
AM12 (Policy W8)	Delete criterion vi of Policy W8 (Station Approach Regeneration Area) as follows: vi. The proposals assess the impact of buildings heights on views and adjoining areas unless a taller building can be justified in townscape terms. Taller buildings are unlikely to be acceptable in close proximity to nearby residential properties;	Comments from Historic England The wording of this criterion is repeated in vii
AM13 (Policy WK1)	Amend para. 14.111 of supporting text as follows: 14.111 The details of the access arrangements, including off-site improvements which are likely to be necessary to the A334/Titchfield Lane junction, will need to be developed and tested at the planning application stage and other access arrangements which meet the requirements of policy WK2 are not ruled out.	Comment from Wickham and Knowle Parish Council. Clarification and removal of reference to removed policy
WK3 Para. 14.116	14.116 Policy WK3 below sets out the planning framework for the areas within Winchester district identified as having potential to deliver green infrastructure as part of the Welborne development. <u>These form part of a much larger area designated as Settlement Gap under NE7.</u>	To clarify the different areas covered by different policies.
AM14 (Policy SW01)	Amend supporting text as follows: 14.169 The site at South Wonston consists of an area of land located at the northern end of the village, at the corner formed by The Alresford Drove and West Hill Road North. The site is within the countryside, with its south-eastern corner abutting the settlement boundary. There is existing residential development to the south and east of the site and open countryside to the north and west. 14.170 The site itself is flat consisting of open fields, with some established trees and hedgerows along the boundaries to The Alresford Drove Read restricted byway and	For clarification purposes

Additional Modification Reference/ Paragraph number	Proposed Modification	Reason
	Public Right of Way (PROW) and parts of West Hill Road. The site is characteristic of the visually open and expansive arable landscape of the Wonston Downs Landscape Character Area, as identified in the Winchester LCA 2022.	
AM15 (Policy SU01)	Delete para. 14.186 of supporting text as follows: 14.186 This allocation falls within an area which is served by one or more GP practices. The NHS Integrated Care Board has advised that the relevant practices are working from surgeries which fall below relevant NHS space standards for the number of people on the current practice patient list. Further details are set out in the Council's Infrastructure Delivery Plan. Developers are encouraged to contact the ICB at an early stage to understand what the current position is, and any requests for support from the ICB to fund expansion. This will not apply to any development which comes forward under existing outline consents.	Paragraph added in error – largely duplicates text in following paragraph 14.187
AM16 (Monitoring)	To amend monitoring framework as follows: Page 516 – Policy NE4 (Green and Blue Infrastructure) This policy will be monitored through: <ul style="list-style-type: none"> • Number of planning applications delivering green and blue infrastructure via a S106 Agreement? • Number of applications refused and appeals upheld Page 525 - Local Plan Monitoring Framework – Homes for all – page 525 <div data-bbox="454 1201 1489 1433" style="border: 1px solid black; padding: 5px;"> Policy H12 Provision for Gypsies, Travellers and Travelling Show People Policy H13 Safeguarding Policy H14 Authorised Traveller Site Intensification Policy H15 New/Expanded Traveller Sites Policy H16 The Nurseries, Shedfield Policy H17 H18 Tynefield, Whiteley </div>	To correct typological errors.

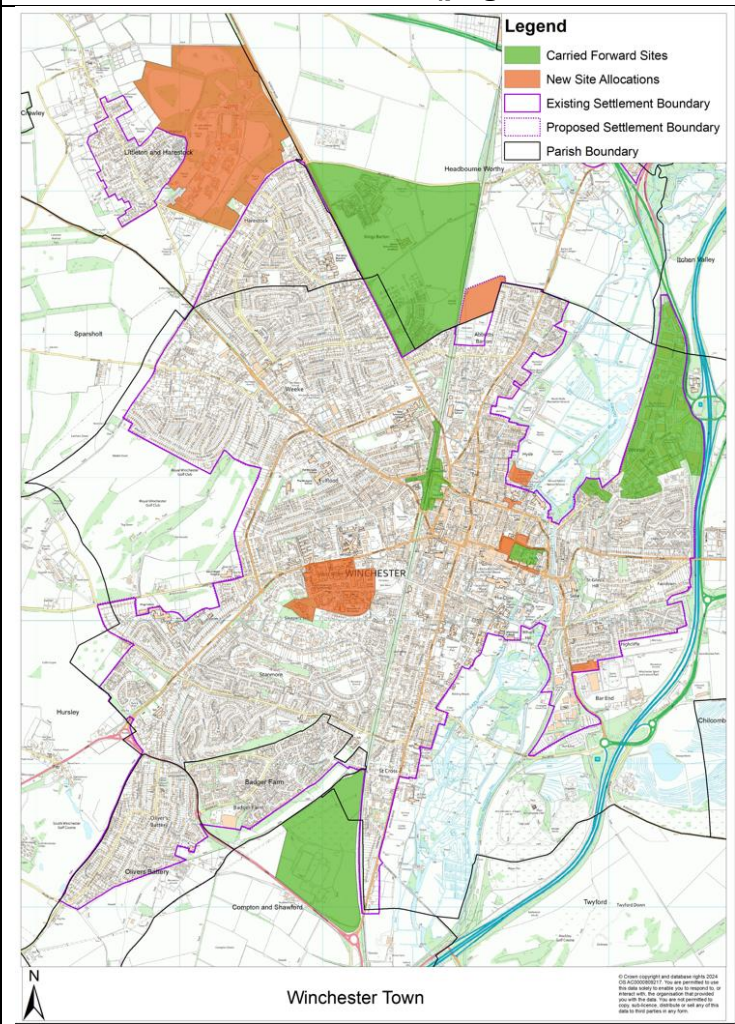
Additional Modification Reference/ Paragraph number	Proposed Modification	Reason
AM17	Page and paragraph numbers updated as needed	To reflect proposed modifications
AM18	Update text on pages 1-13 to reflect stage of plan reached	To reflect stage of plan
AM19 (Homes for all contents page)	Update text on homes for all contents page to reflect stage of plan reached Renumber of the Housing Policies and check any cross referencing. (not reflected in current main modifications) Subsequent changes to page numbering.	To reflect changes to the plan after removal of the phasing policy H2
AM20 (Appendices)	Renumbering of appendices due to adding housing trajectory (not reflected in current main modifications)	
Appendix v Housing Trajectory	Replace references to “Housing Requirement” with “Housing Need” in rows 84, 87 and 93.	To make it clear what the housing trajectory is assessing.
AM21 (Monitoring for H1, H2 and H3)	Update text on pages 523 to reflect the deletion of Policy H2 Delete: Strategic Policy H2 Housing Phasing and Supply	To reflect changes to the plan after removal of the phasing policy H2
AM22 (Existing And New Policy Numbers – Continued)	Update text on pages 533 to reflect the deletion of Policy H2 and renumber of housing policies accordingly Delete: Strategic Policy H2 Housing Phasing and Supply	To reflect changes to the plan after removal of the phasing policy H2
Appendix III Glossary	<u>The Ecological network is a group of habitat patches and core sites connected by buffer zones, wildlife corridors and smaller wildlife rich sites, that species can move easily between maintaining ecological function and conserving biodiversity. Ecological networks are important in their own right and can also act as ‘stepping stones’ providing a connected collection of refuges for wildlife. The Local Ecological Network has been mapped by HBIC.</u>	In response to representation from Natural England to include a definition in the glossary.

Additional Modification Reference/ Paragraph number	Proposed Modification	Reason
Appendix V Housing Trajectory	Replace references to "Housing Requirement" with "Housing Need" in rows 84, 87 and 93	To make it clear what the housing trajectory is assessing.
AM23 (How Will This Topic Help To Deliver The Vision In The New Local Plan? Key issues)	Update text on pages 68 to reflect the deletion of the phasing policy (Policy H2). Change to criteria xxxi. Location of new development (the Development Strategy), and how this indirectly influences health and well-being (15 minute cities ¹), Settlement boundaries, Brownfield first , <u>and</u> Inner City accommodation.	To reflect changes to the plan after removal of the phasing policy H2
AM24 (The Market Towns And Rural Area Allocations table)	Update text on pages 387 to reflect the change in the /new figures. Approximate Housing Provision 2024 2020-2040 The figures will need changing.	To reflect changes to the housing figures
Settlement Maps	<p>The following revisions have been made to the settlement maps for:</p> <ul style="list-style-type: none"> Winchester Town, Bishops Waltham, New Alresford, Colden Common, Denmead, Kings Worthy, Swanmore, and Wickham and Knowle <p>The following revisions have been made to the inset maps for site allocations:</p> <ul style="list-style-type: none"> W1, W2, W3, W7, W8, W11, CC1, SW1 and WK3. <p>Please note that, to ensure consistency throughout the Local Plan with the maps that needed revising to show the SDNP Boundary, all settlement maps and inset allocation maps will be updated reflecting the new mapping system and revised OS basemaps. No changes will be made to the allocation itself.</p> <p>See revised maps below</p>	SDNP request to show SDNP boundary on settlement and inset maps for context.

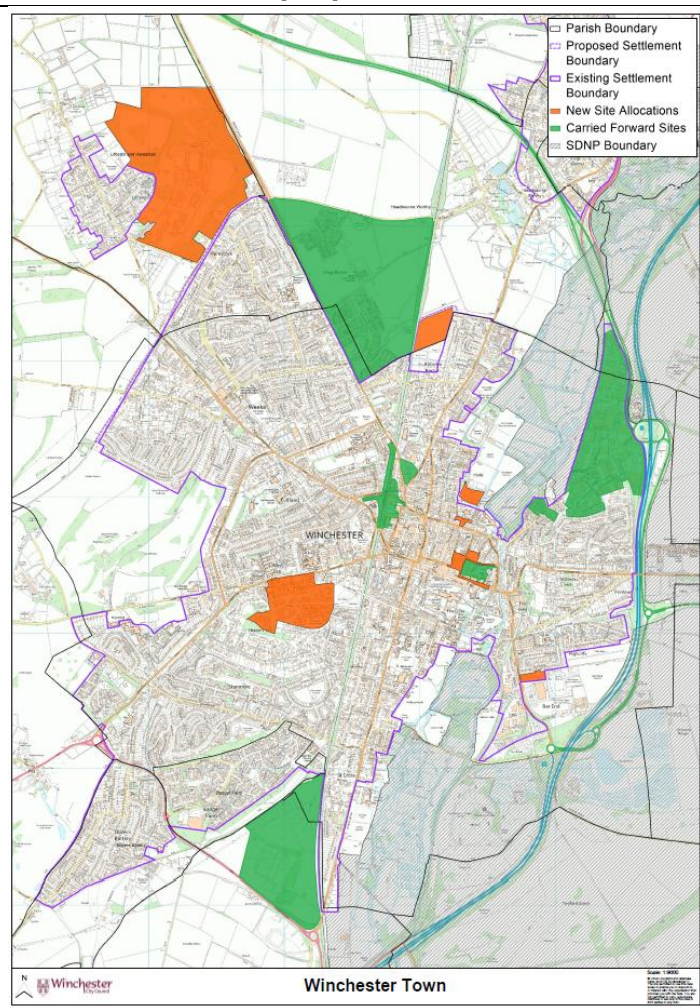
Changes to reflect SDNPA request for maps to show the SDNP Boundary

Overview maps

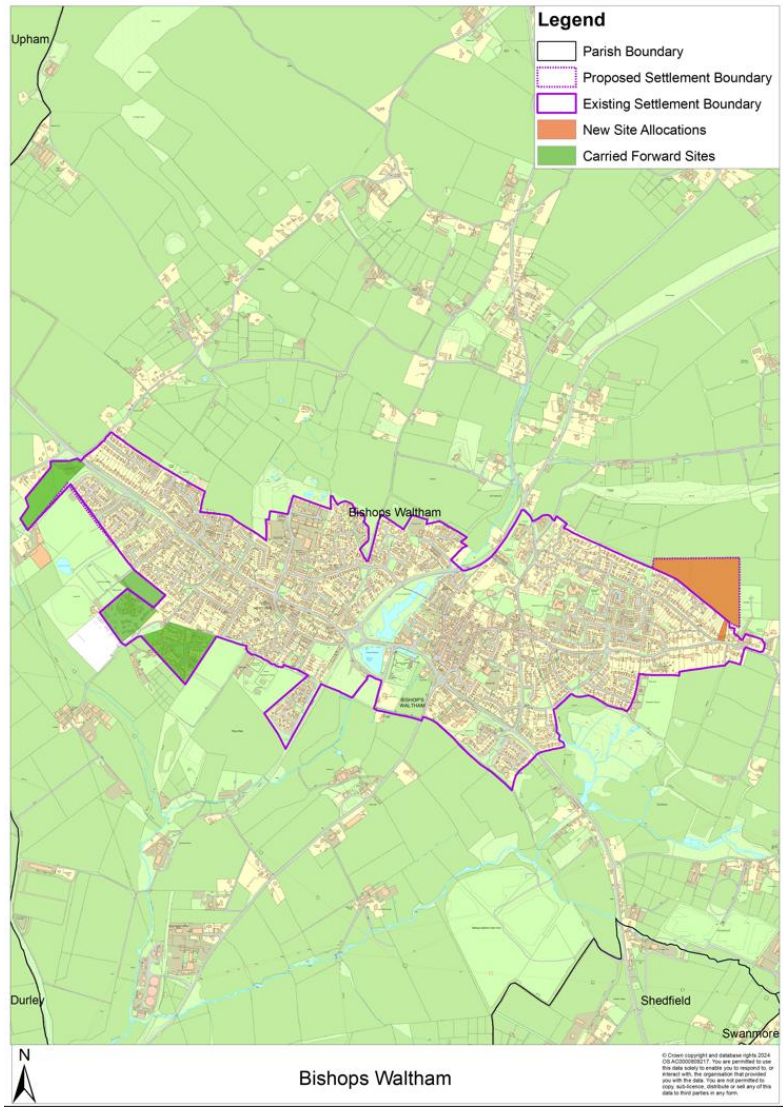
Winchester Town overview (page 308 in the Local Plan)



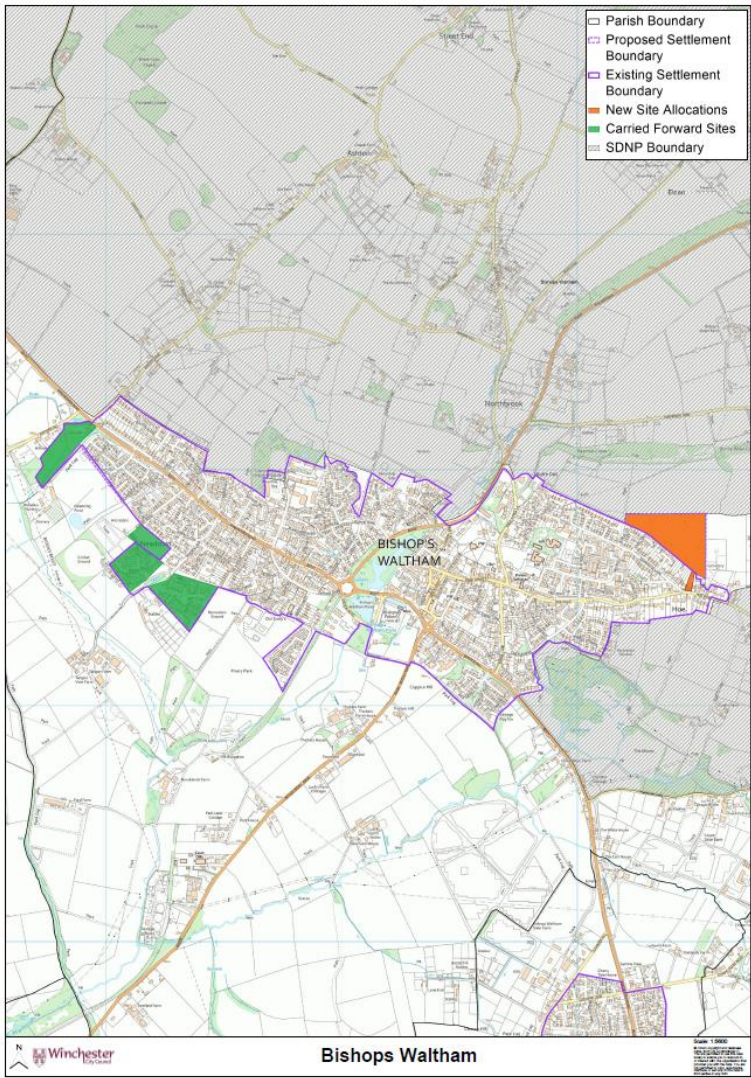
Winchester Town proposed modification to show SDNP



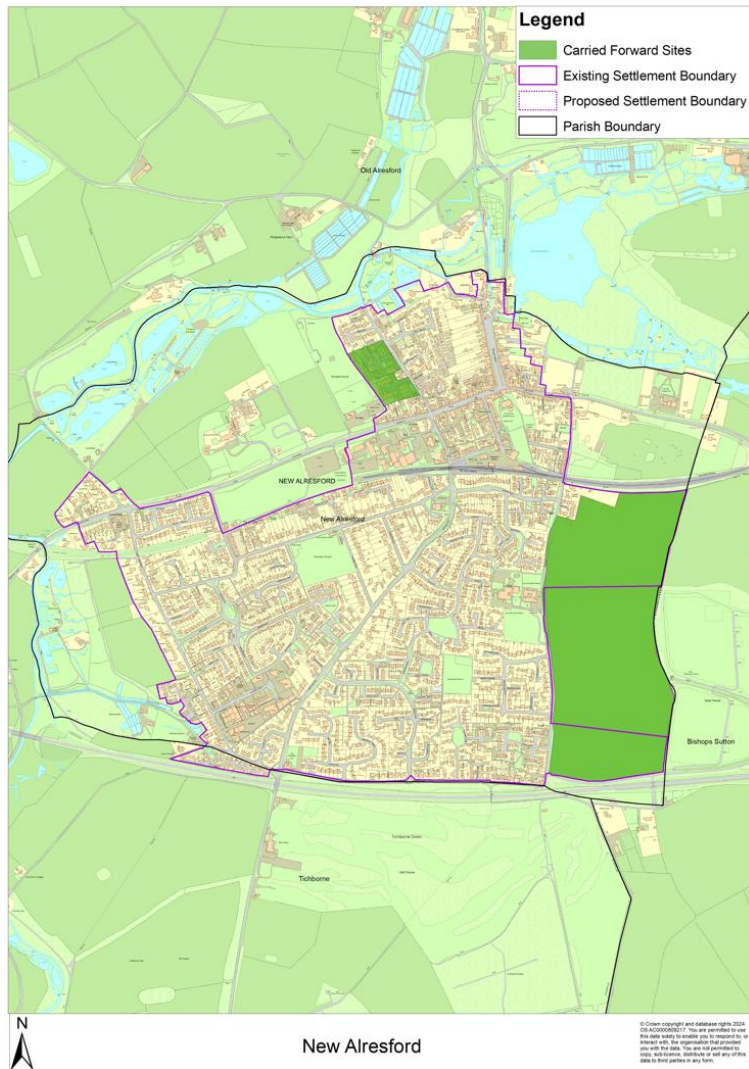
Bishops Waltham overview (page 392 in the Local Plan)



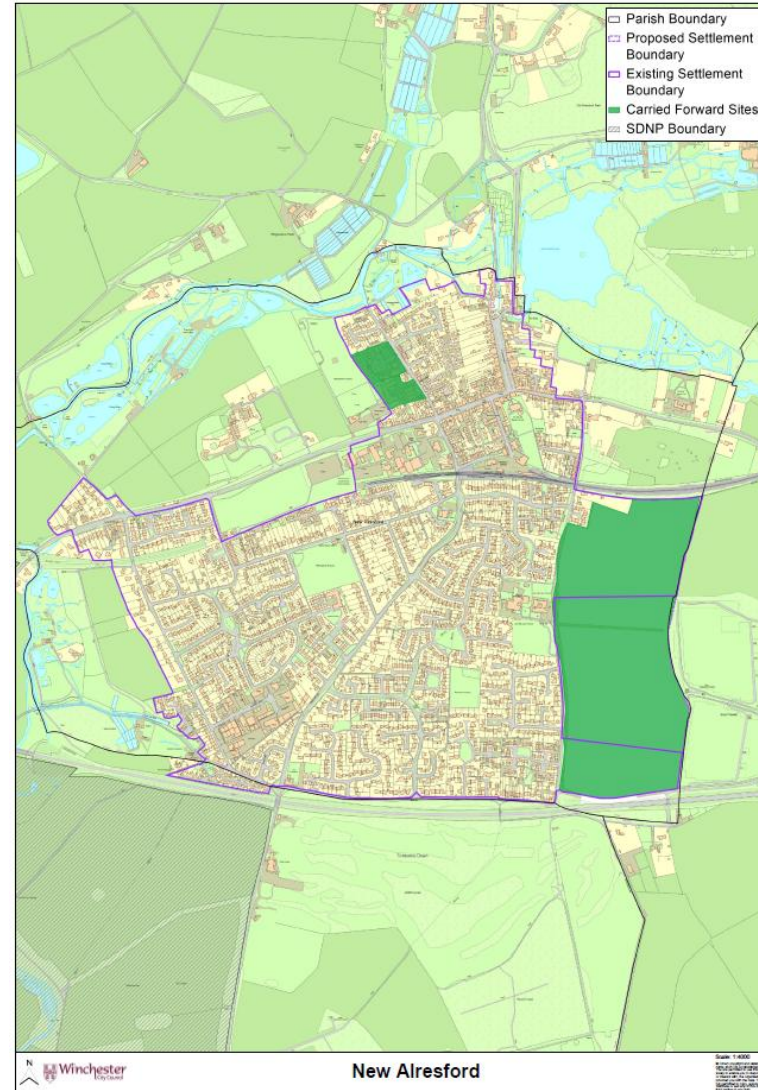
Bishops Waltham overview proposed modification to show SDNP



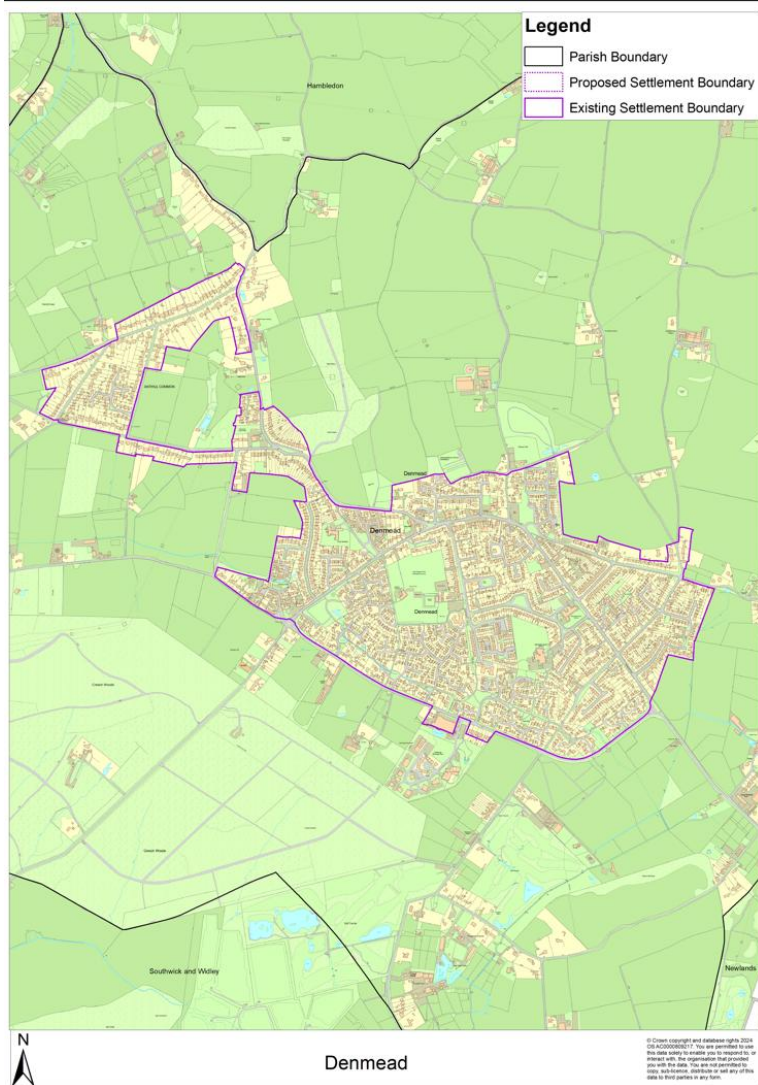
New Alresford overview (page 406 in the Local Plan)



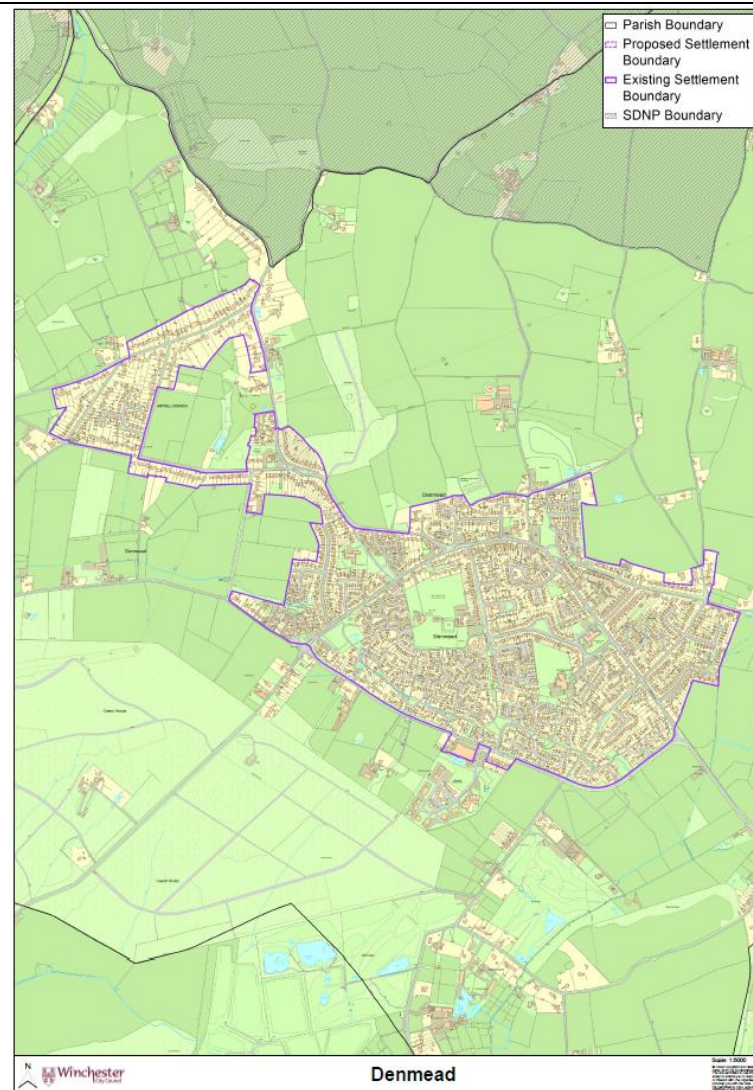
New Alresford proposed modification to show SDNP



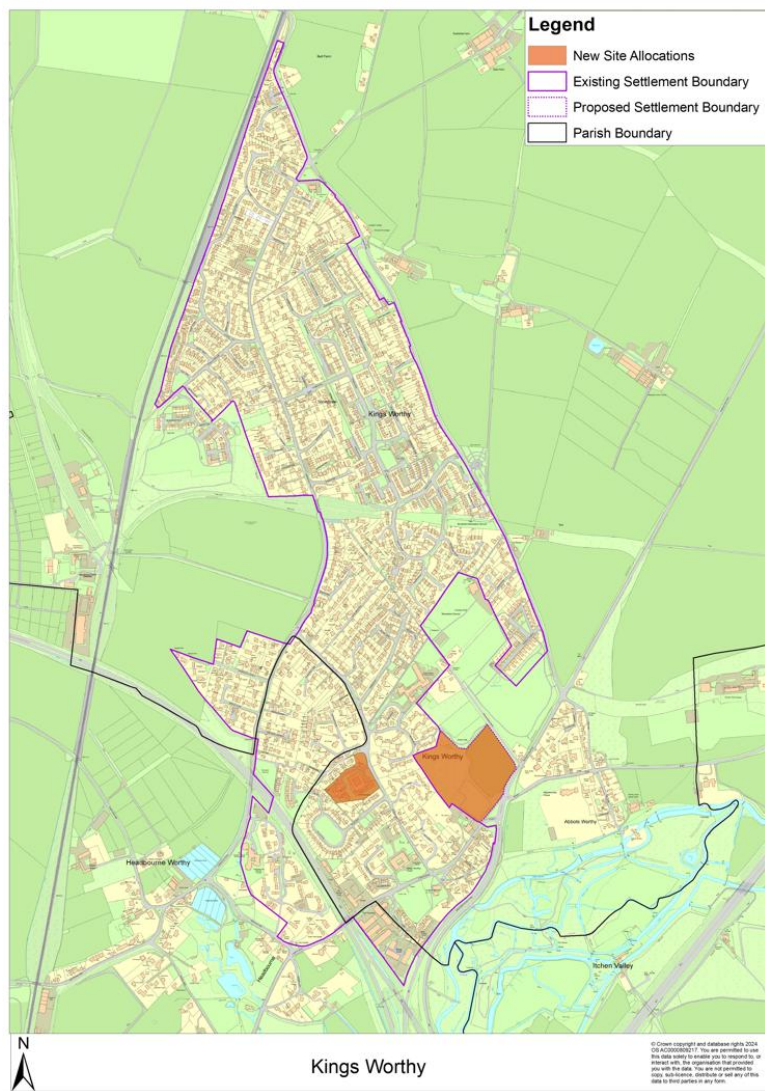
Denmead overview (page 436 in the Local Plan)



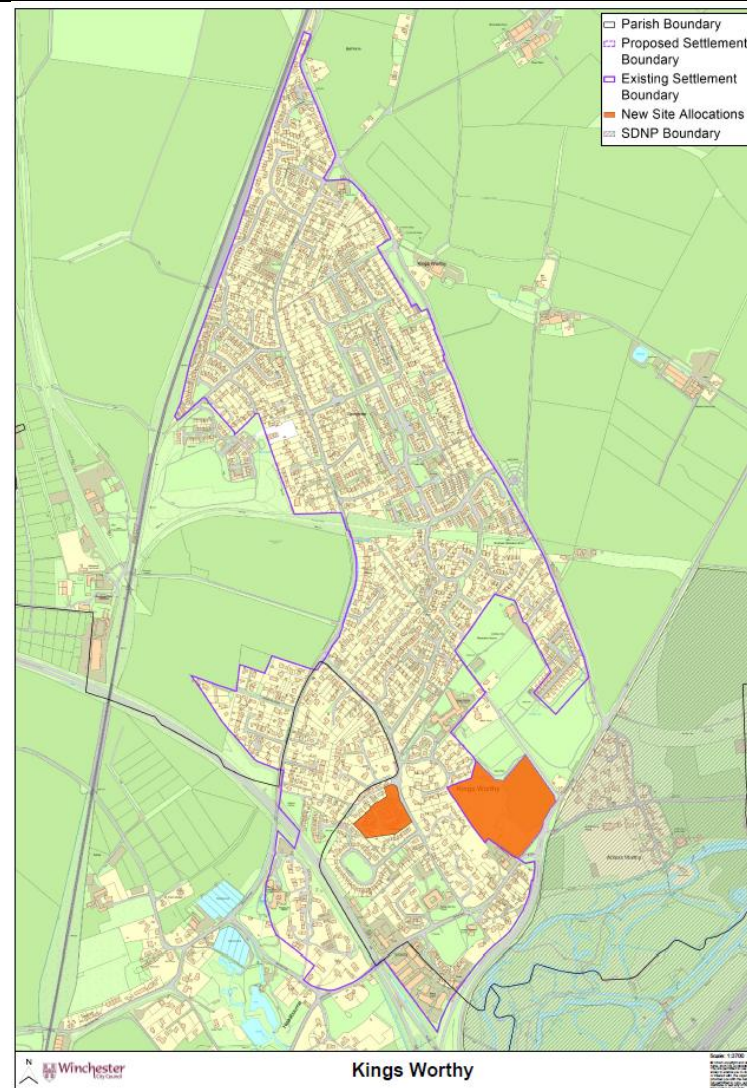
Denmead proposed modification to show SDNP



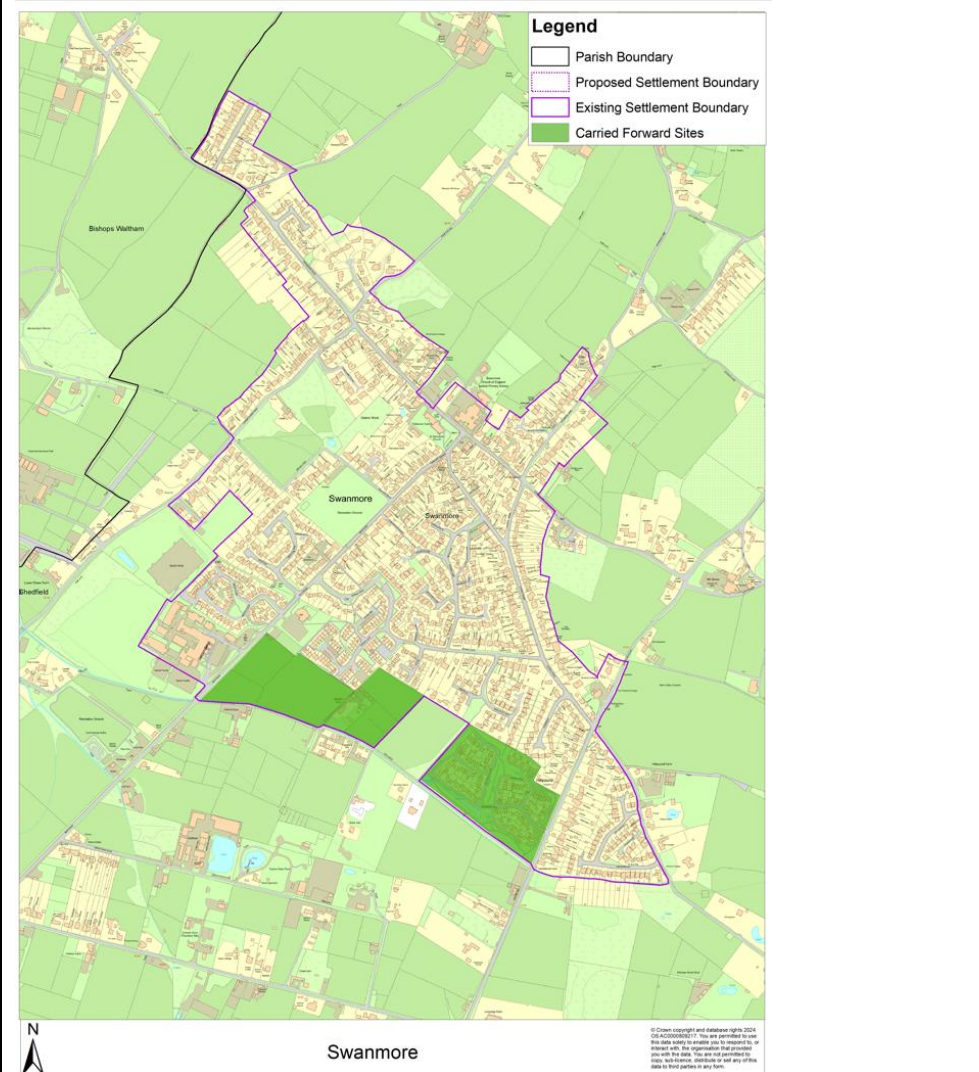
Kings Worthy overview (page 440 in the Local Plan)



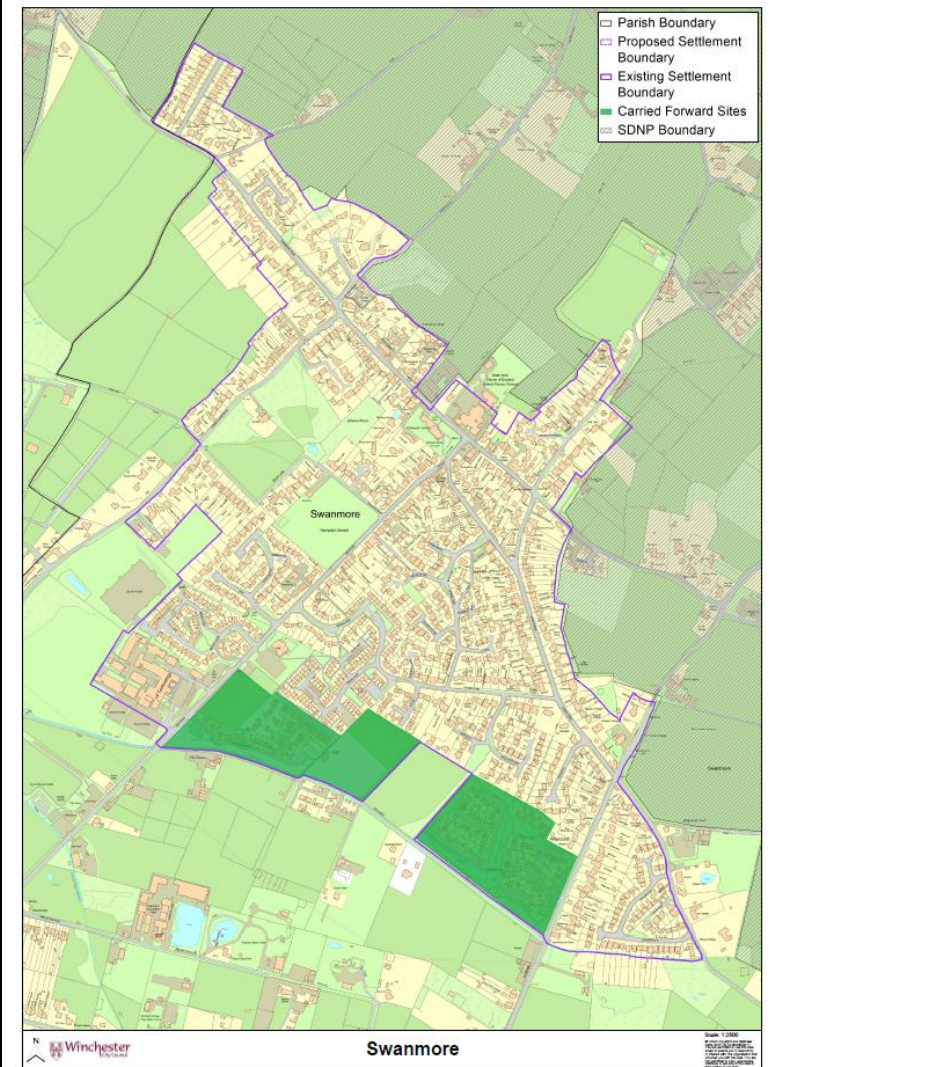
Kings Worthy proposed modification to show SDNP



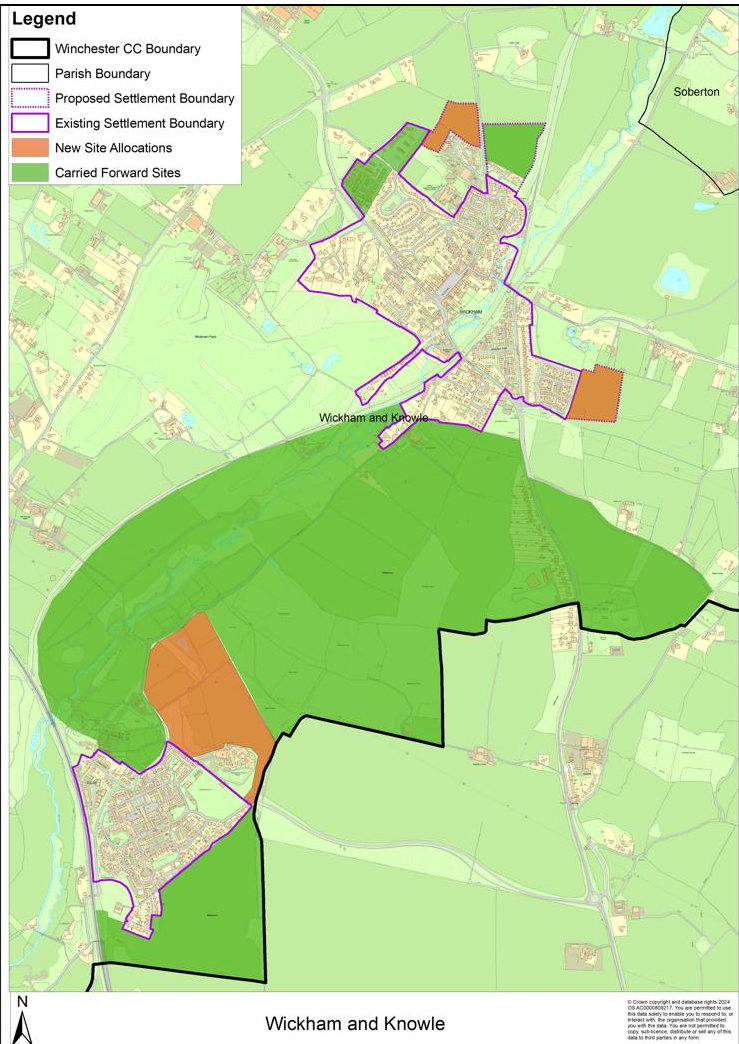
<p>Swanmore overview (page 448 in the Local Plan)</p>
--



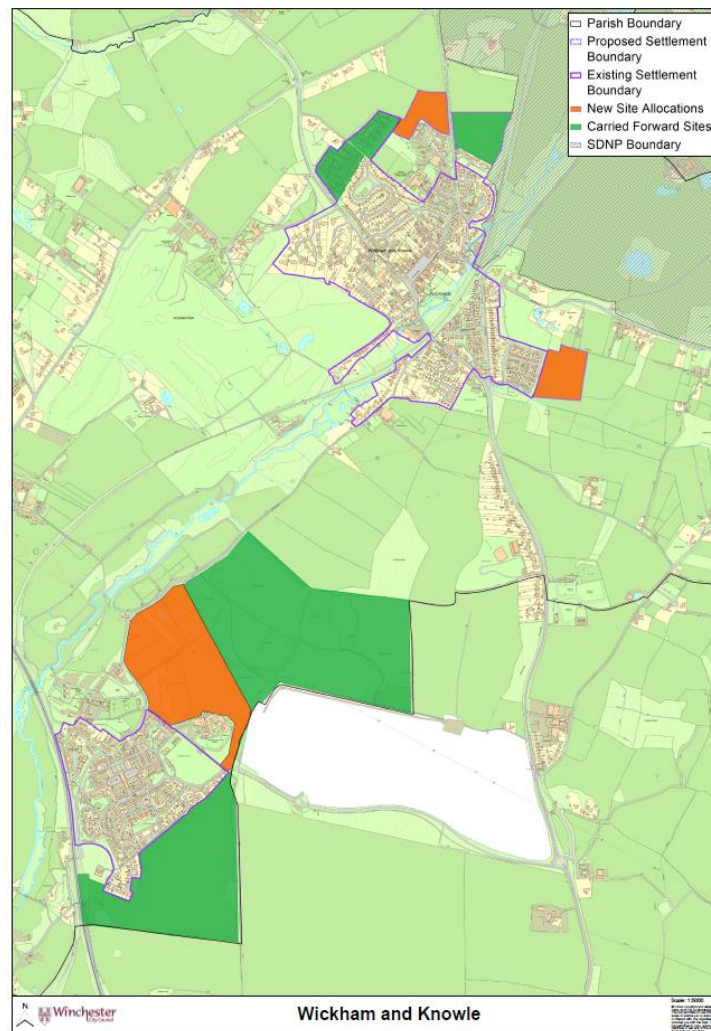
Swanmore proposed modification to show SDNP



Wickham and Knowle overview (page 454 in the Local Plan)

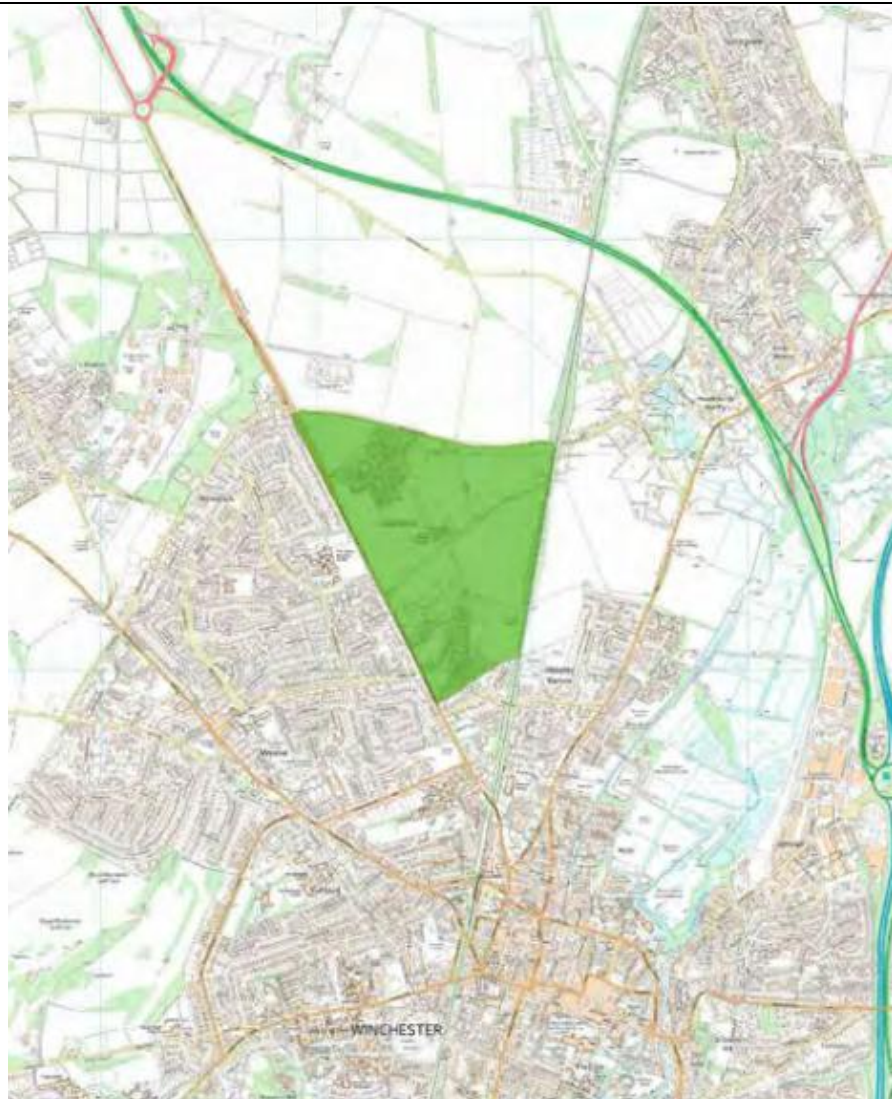


Wickham and Knowle proposed modification to show SDNP

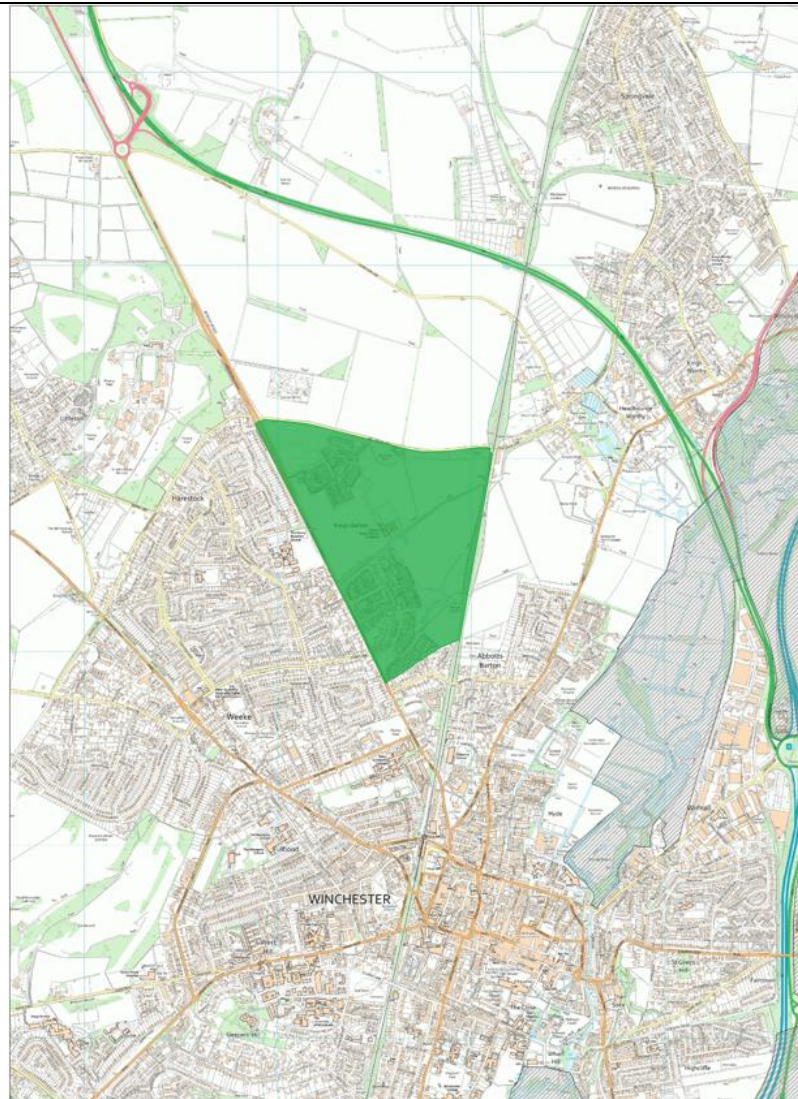


Context maps

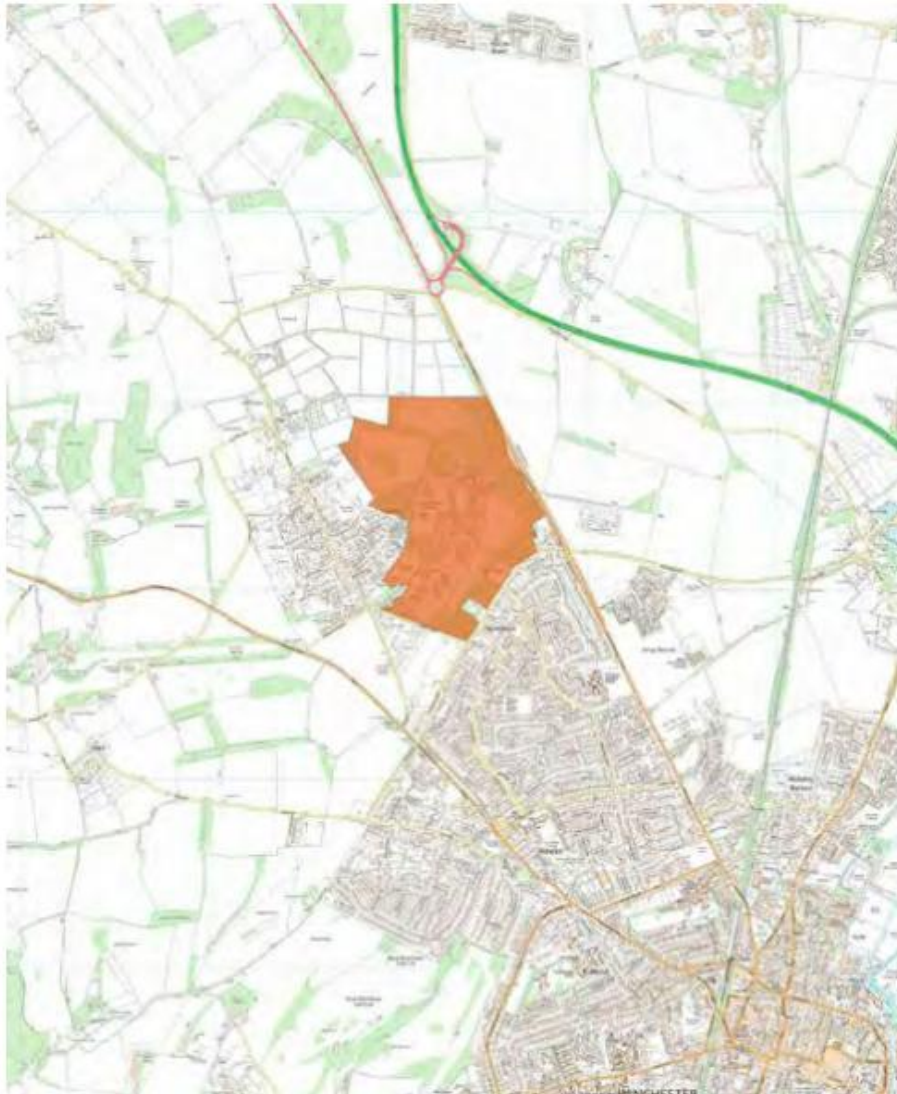
W1 (page 309 in the Local Plan) right hand map



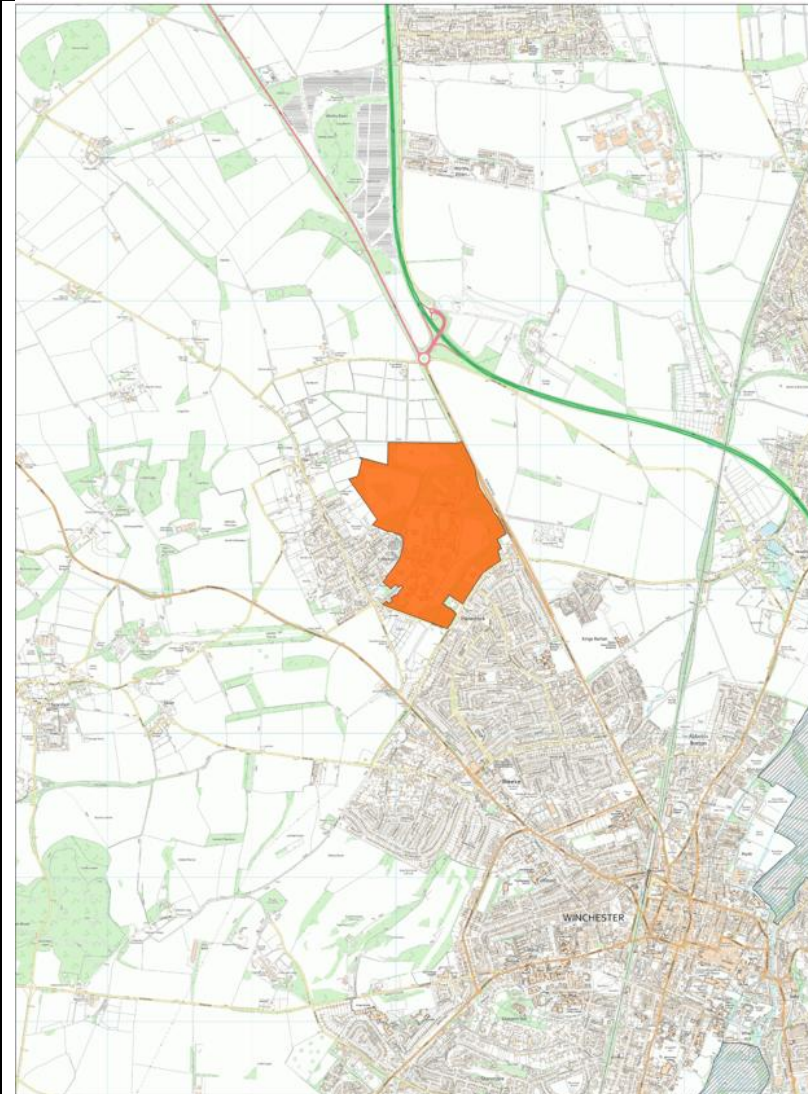
W1 proposed modification to show SDNP



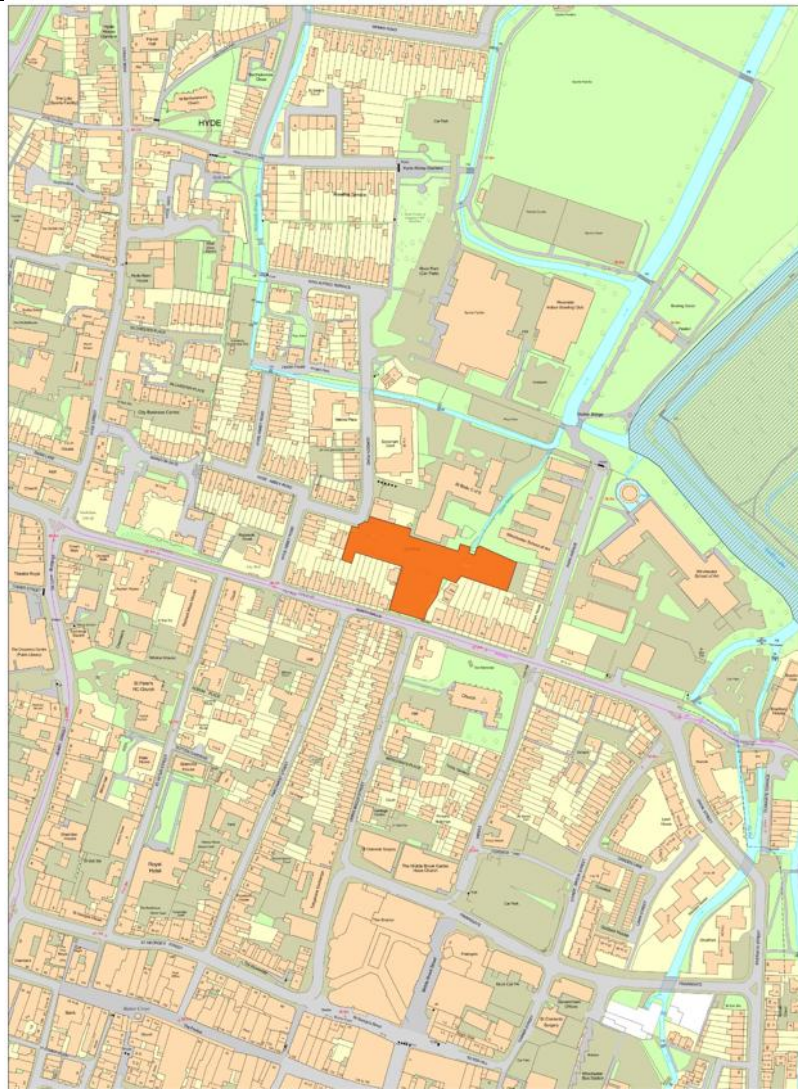
W2 (page 313 in the Local Plan) right hand map



W2 proposed modification to show SDNP



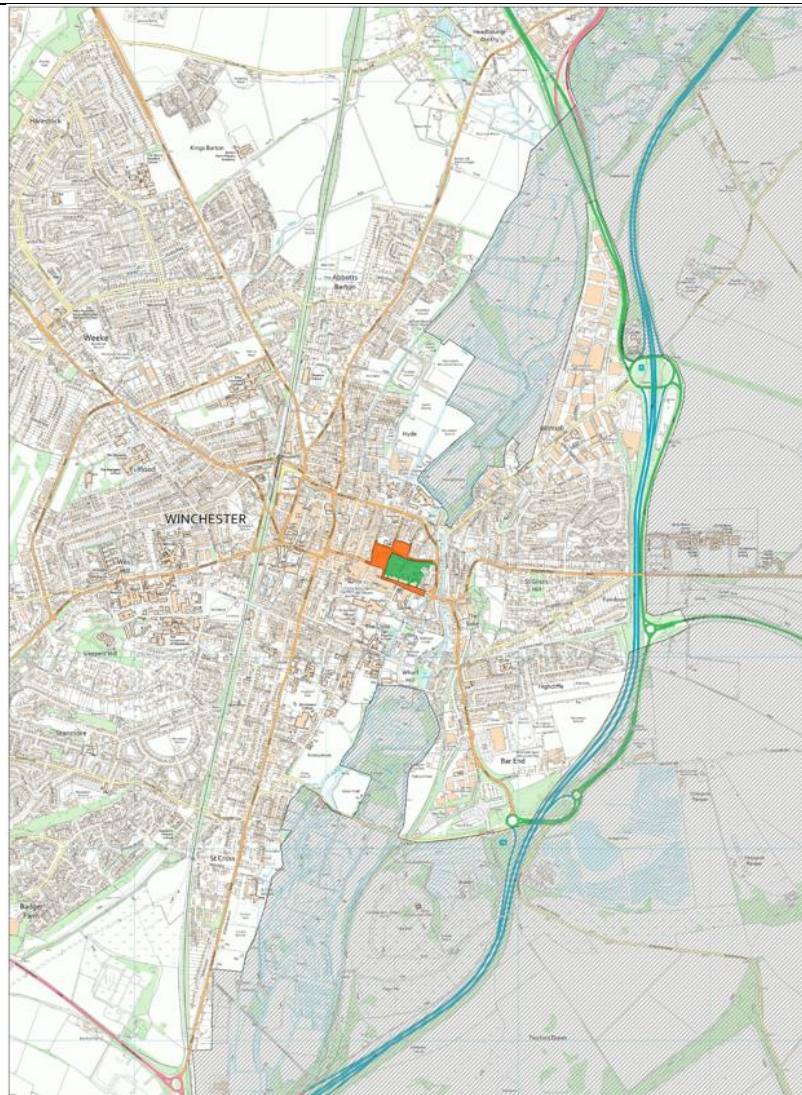
W3 (page 323 in the Local Plan) right hand map



W3 proposed modification to show SDNP



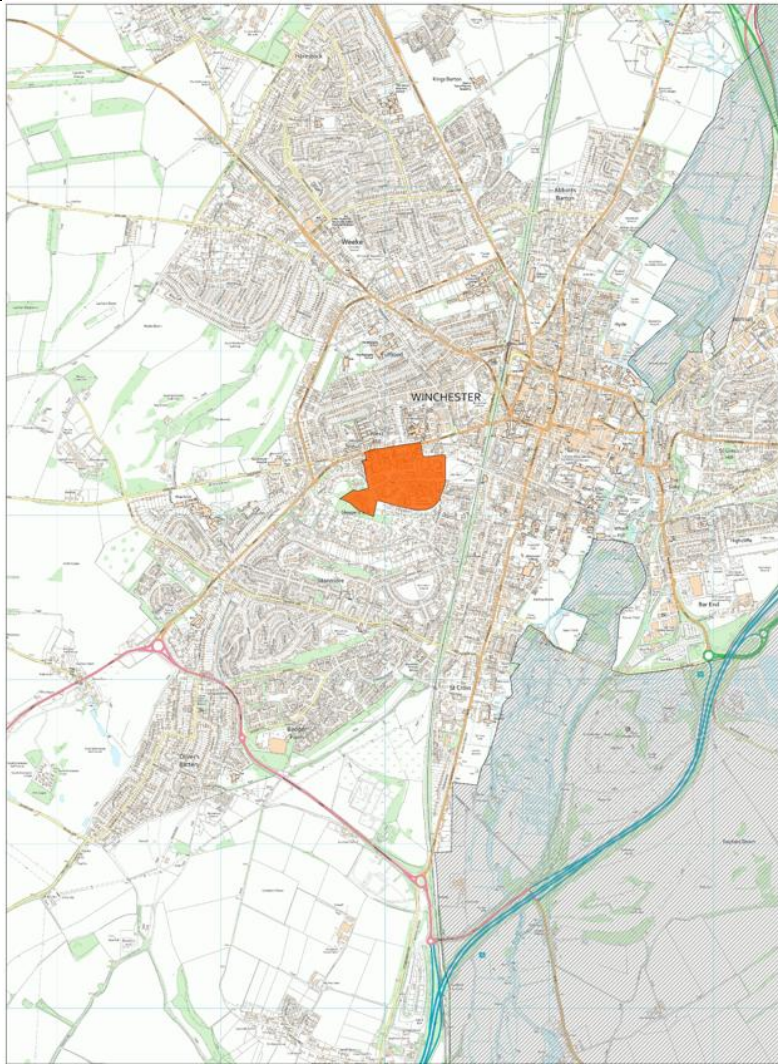
W7 (page 341 in the Local Plan) right hand map



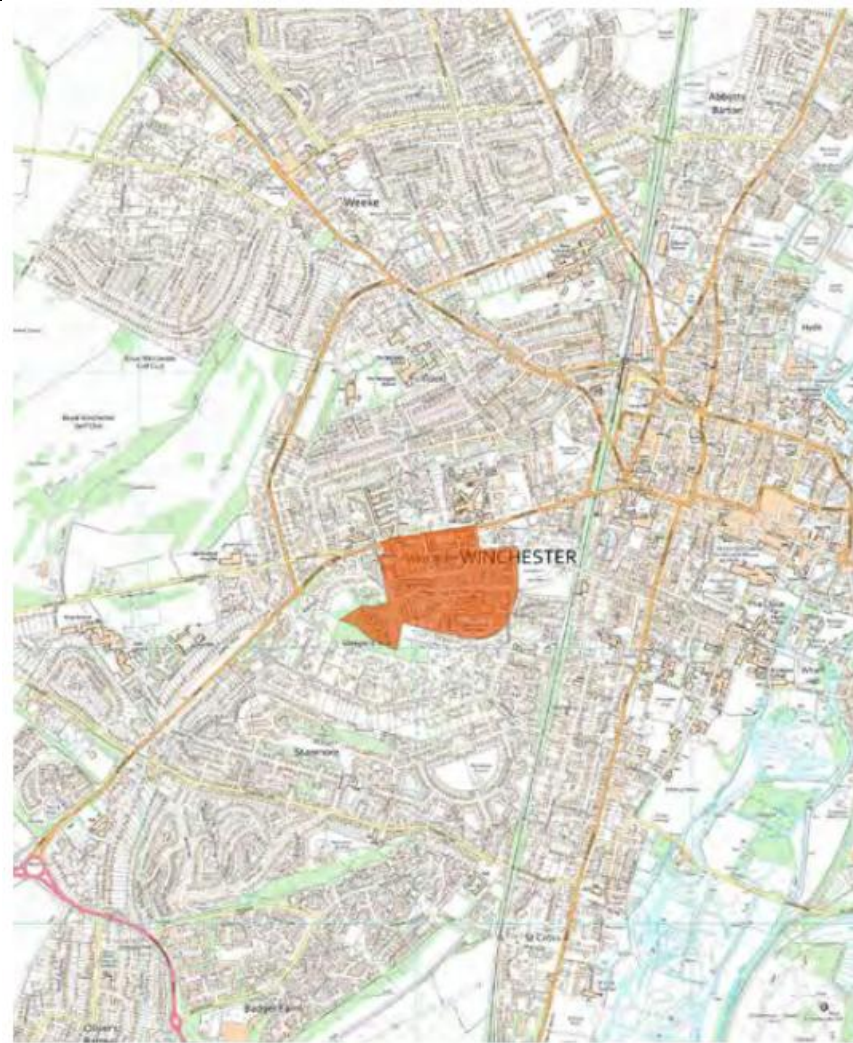
W7 proposed modification to show SDNP



W11 (page 361 in the Local Plan) right hand map



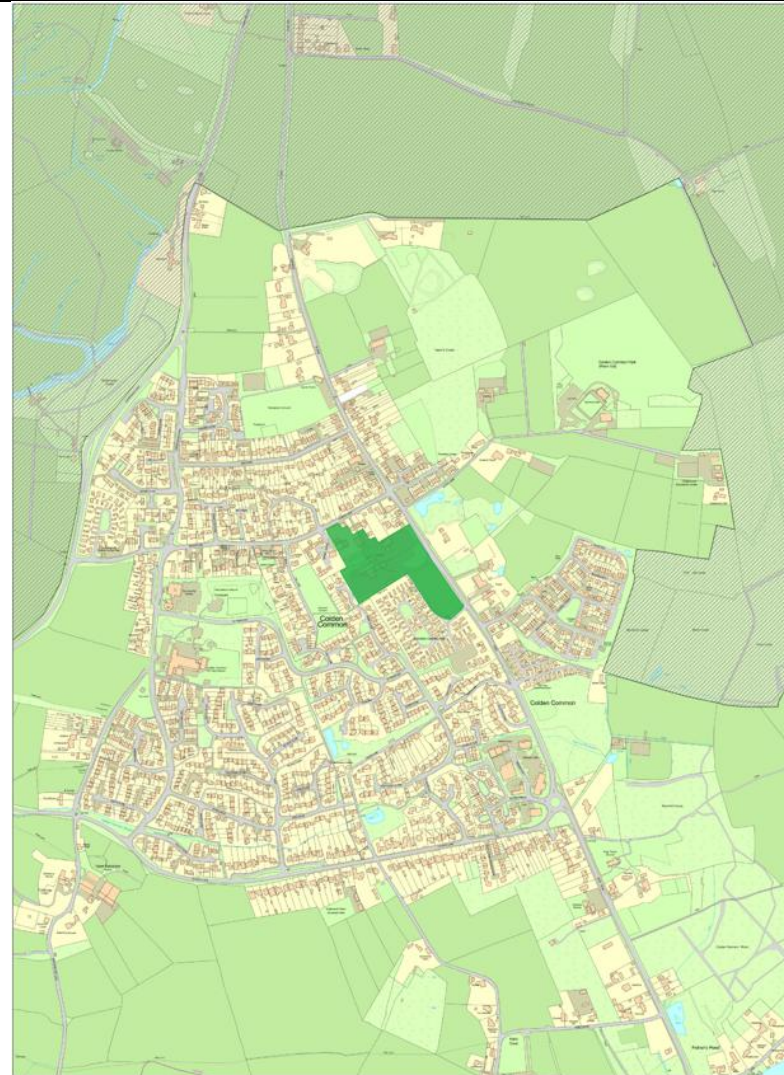
W11 proposed modification to show SDNP



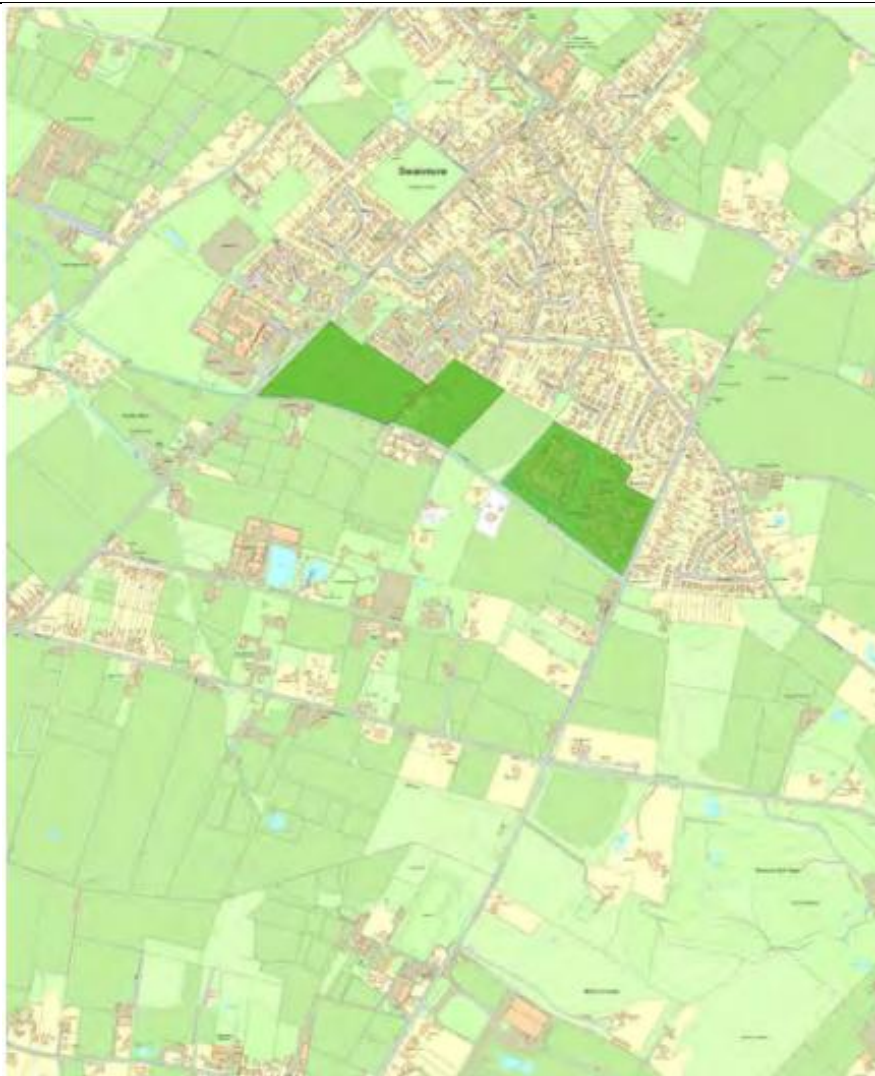
CC1 (page 421 in the Local Plan) right hand map



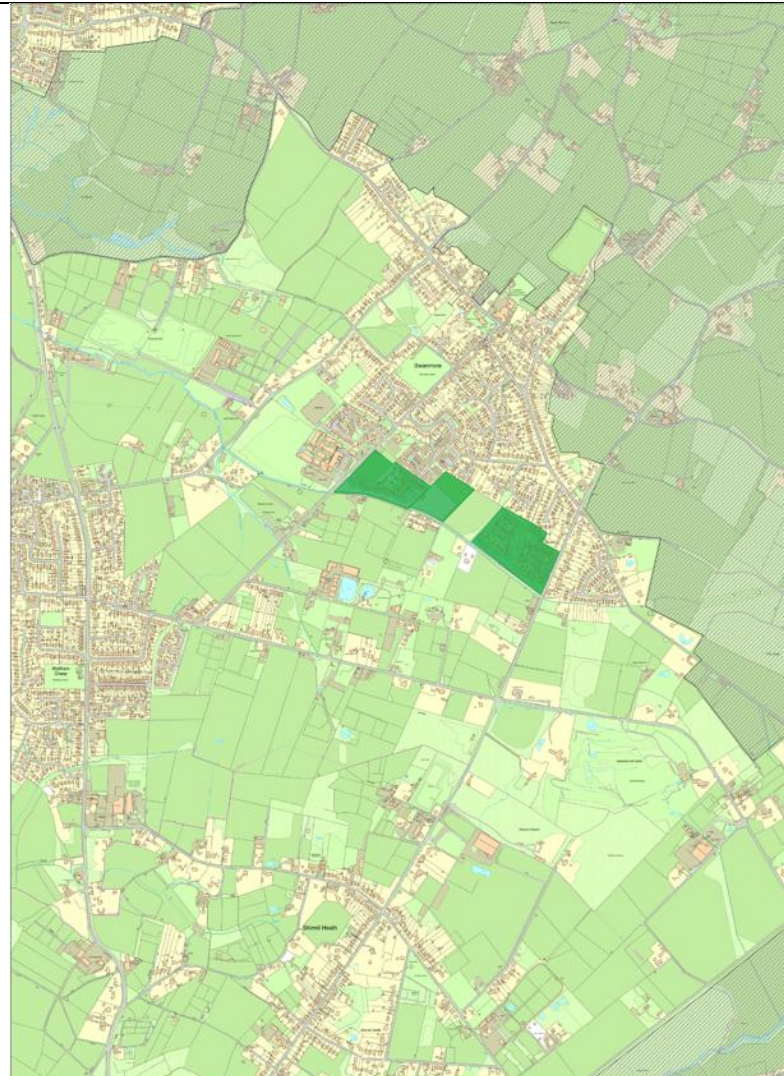
SW1 proposed modification to show SDNP



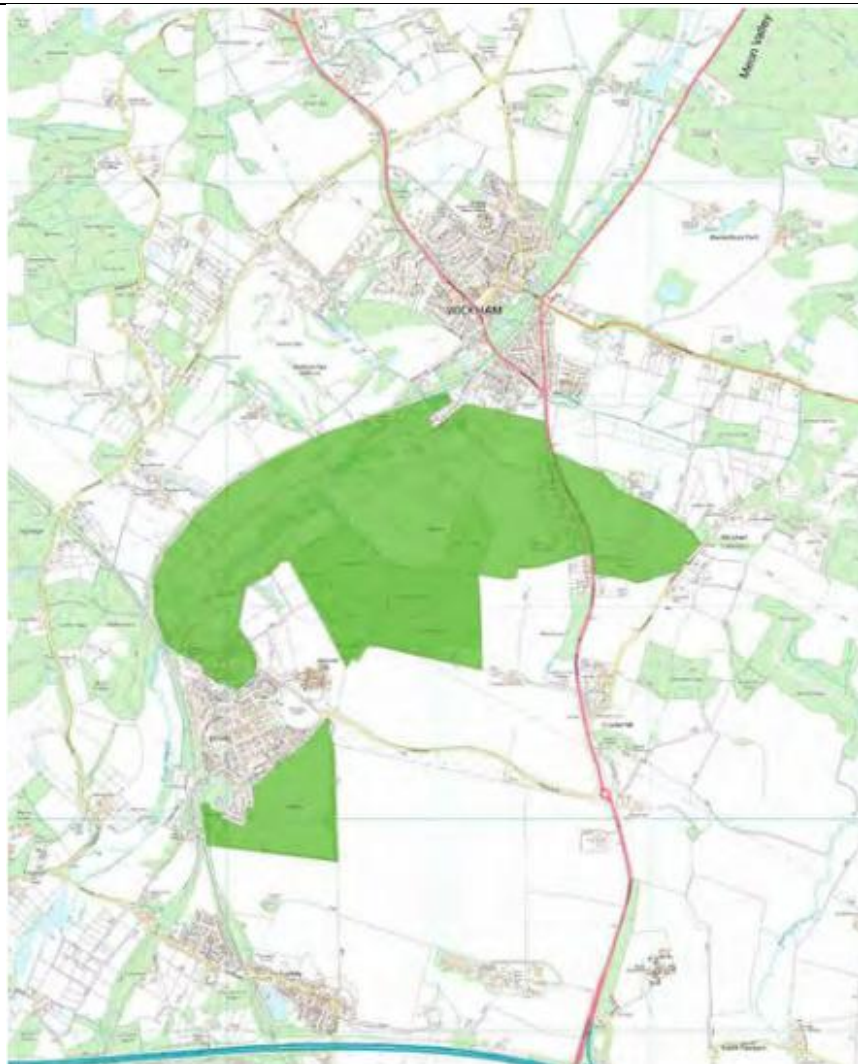
SW1 (page 449 in the Local Plan) right hand map



SW1 proposed modification to show SDNP



WK3 (page 459 in the Local Plan) right hand map



WK3 proposed modification to show SDNP

