

ED41d

# **YOUR PLACE YOUR PLAN.**

Winchester District Local Plan

Proposed Changes to the Policies Map

**November 2025**

## Background

This document shows the proposed changes to the Policies Map arising due to main modifications and other minor revisions.

Those proposed changes have now been set out in this separate document in response to the guidance which states that the Inspector has no powers to recommend modifications directly to the Policies Map.

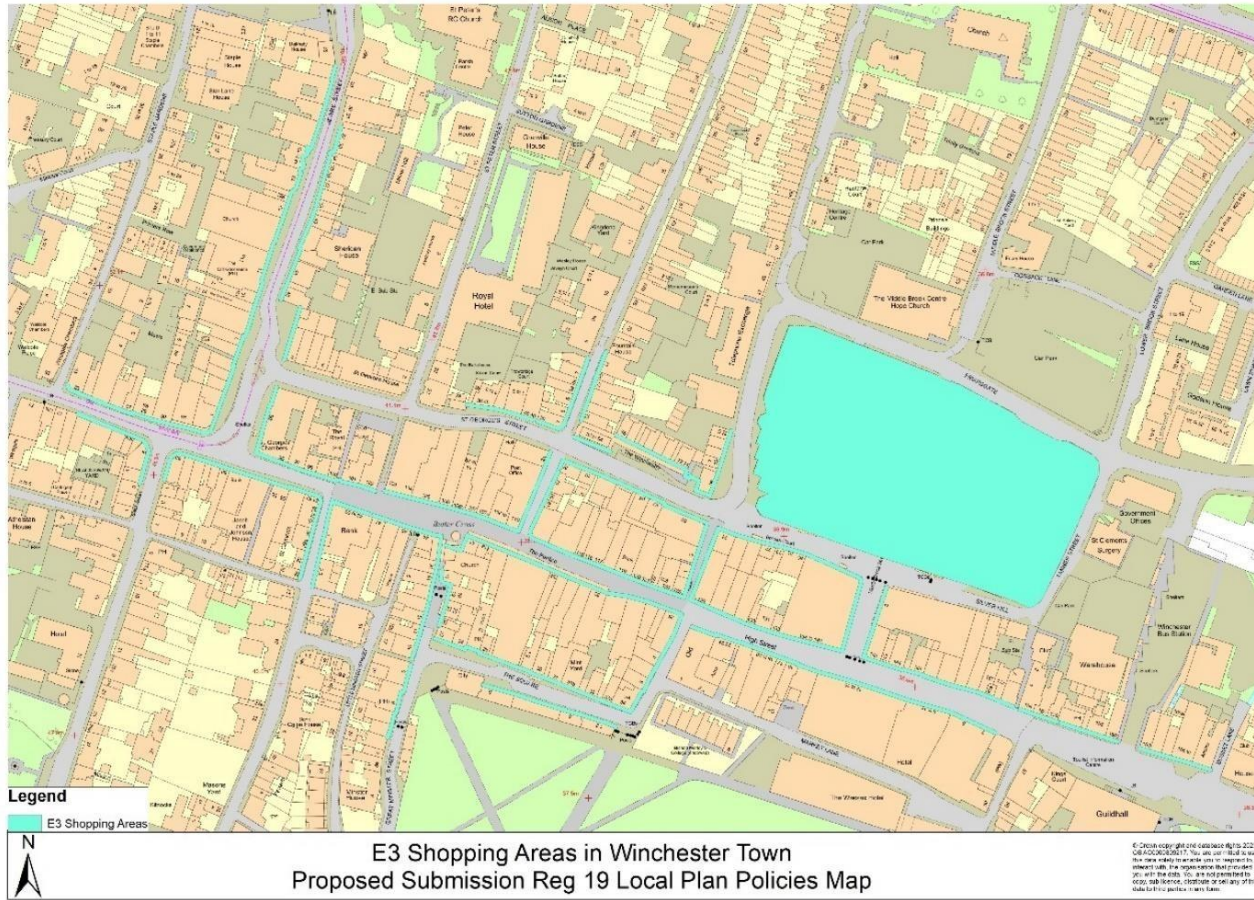
The Procedure Guide for Local Plan Examinations notes<sup>1</sup> that:

6.6 The policies map is not defined in legislation as a development plan document. This means that the Inspector has no powers to recommend MMs directly to it. However, the role of the policies map is to illustrate geographically the application of policies in the plan. If the geographical illustration of a policy is flawed, the policy will be unsound. In such circumstances, therefore, the Inspector will ask the LPA to draw up a proposed change to what is shown on the submission policies map. To ensure fairness, any such proposed changes will need to be subject to consultation alongside the MMs. When the plan is adopted, it will be for the LPA to update the adopted policies map to include those changes.

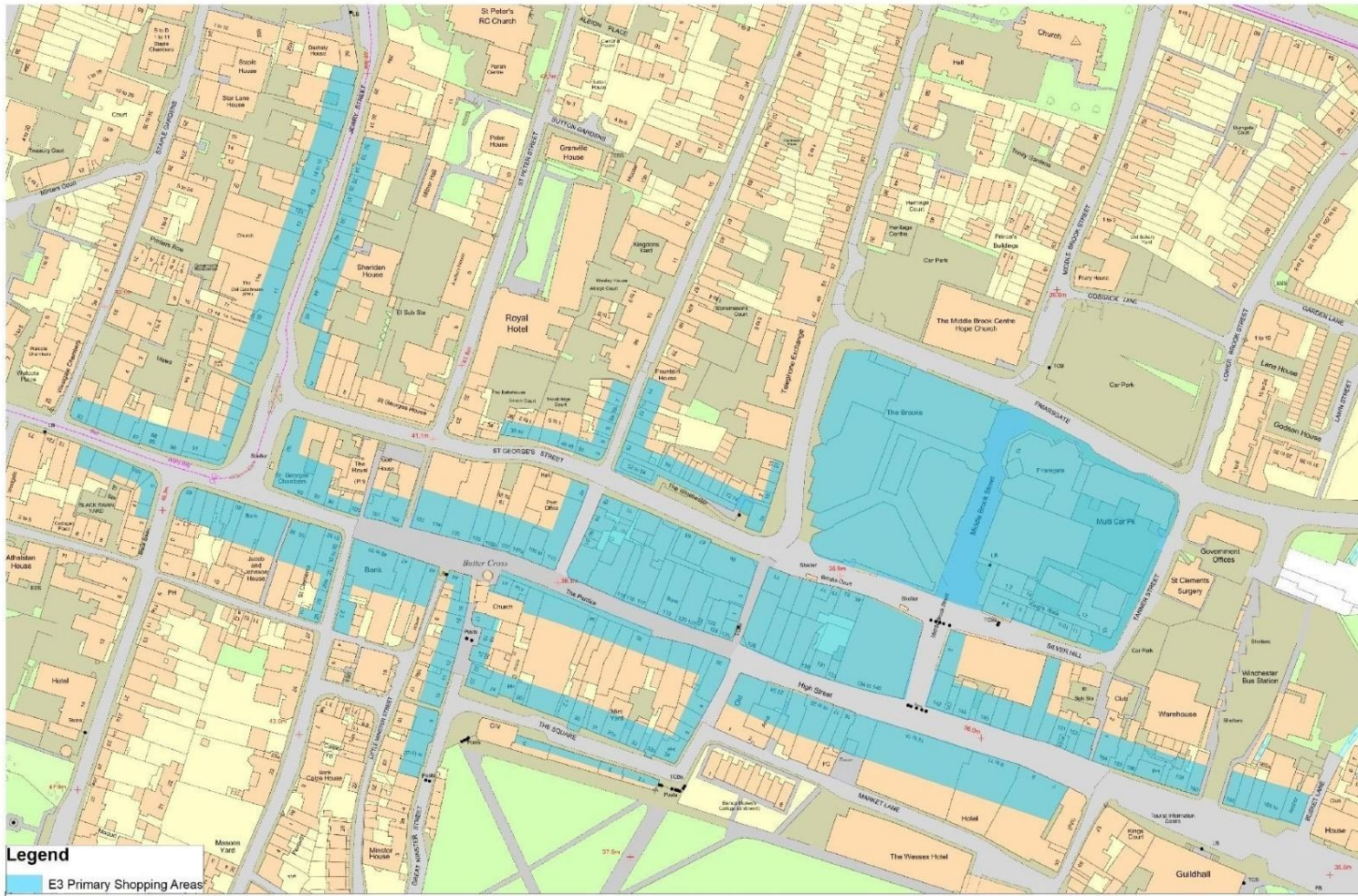
## 1. Changes to Policies Map related to Policy E3

- a) Revise policy map to remove shopping frontages and identify Primary Shopping Areas in line with Policy E3 and Policy E7
  1. Change to the 'E3 Shopping Areas' layer. This proposed modification only affects Winchester Town. The change needs to be made to the online and printed Local Plan Policies Map. All other E3 Shopping Areas will remain the same.
  2. Change to legend of the policies map: 'E3 Shopping Areas' changed to '**E3 Primary Shopping Areas**'

The online Policies Map ([Local Plan Policies Map](#)) and the printed Local Plan Policies Map for Winchester Town currently show this:



# Amendment to Policies Map -Showing E3 Primary Shopping Areas



**Legend**  
E3 Primary Shopping Areas



Amendment from 'E3 Shopping Areas' to 'E3 Primary Shopping Areas' in Winchester Town  
Proposed Submission Reg 19 Local Plan Policies Map

© Crown copyright and database rights 2023  
OS/JA20000002/1. You are permitted to use  
this data solely to enable you to respond to, or  
informed with, the organisation that provided  
you with the data. You are not permitted to  
copy, re-publish, distribute or sell any of this  
data to third parties in any form.

This additional proposed modification is to the legend on the online and printed Local Plan Policies Map. The change is as follows: ~~Town Centre (E3), Local Centre (E3), and District Centre (E3).~~

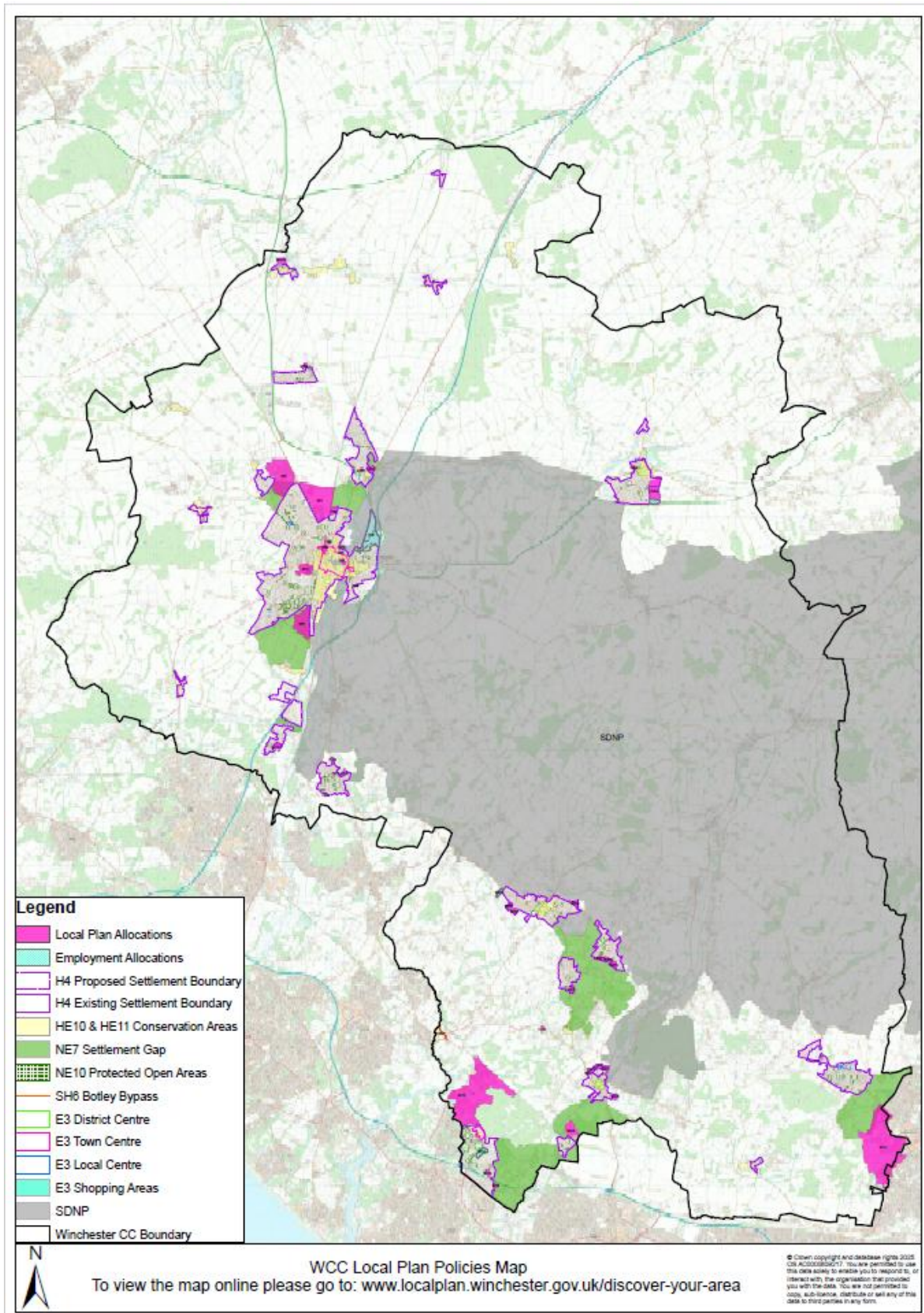
b). To combine them into one layer labelled as: **'E3 Town/District/Local Centre'**

There is no change to the layers themselves, the change is only to the colour of the layer and the title on the legend on the policies map.

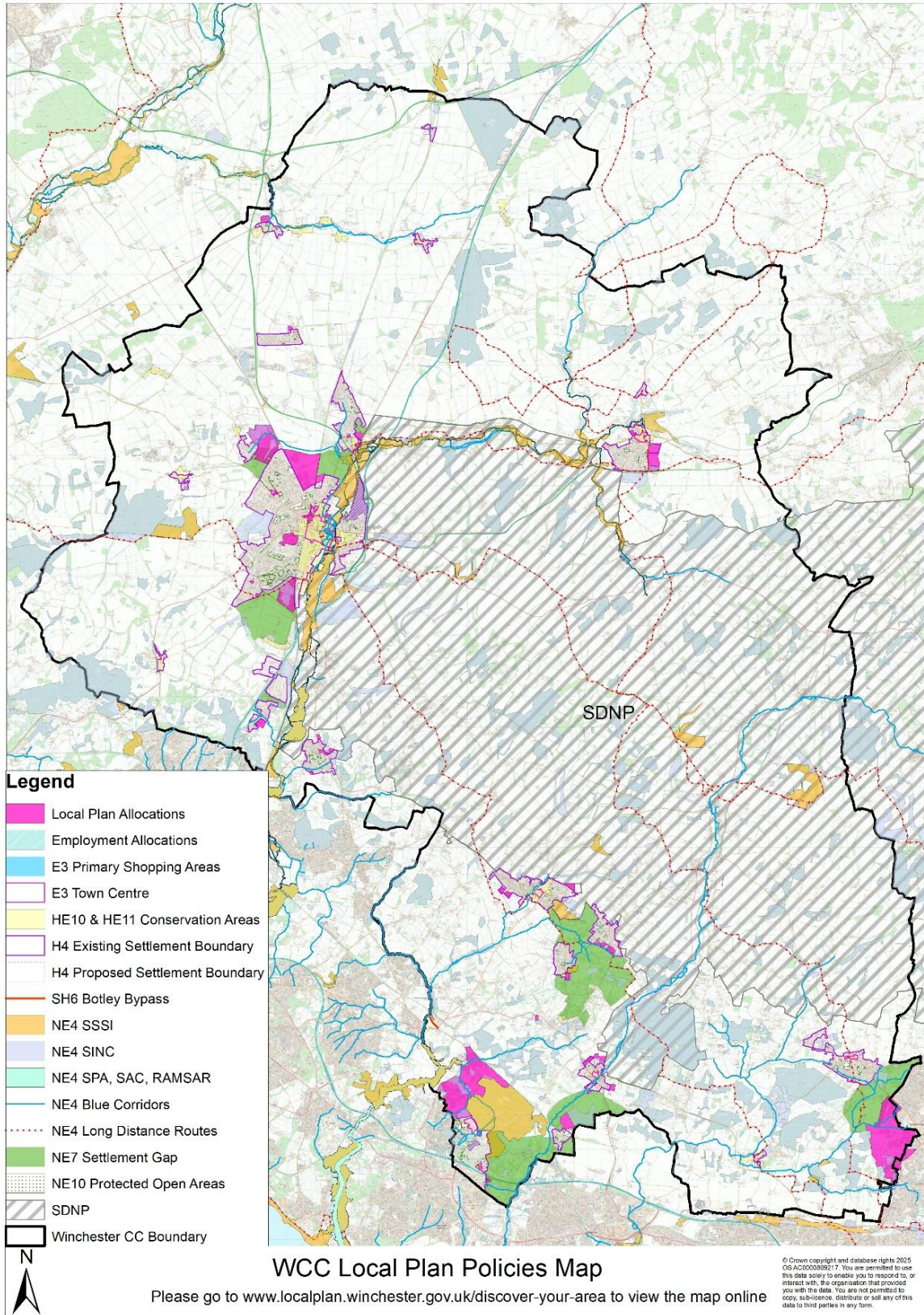
## **2. Changes to Policies Map related to Policy NE4**

The Local Plan Policies Map has been updated to include new layers which are covered by Policy NE4 – Green and Blue Infrastructure. These new layers include: SSSI (Sites of Special Scientific Interest), SAC (Special Area of Conservation), SPA (Special Protection Area) and Rivers (Blue Corridors), SINC (Sites of Importance for Nature Conservation), Ramsar and Long Distance Routes.

The policies map currently shows:



Amendments to map:





### **3. Change to the Policies Map related to Policy W4**

Amendment to site boundary W4 Land at Courtenay Road with the removal of the footpath and also the belt of trees/hedgerow. This is approximately 8m from the edge of the footpath and the allocated site.

1. The proposed modification amends the site boundary on the online and printed version of the policies map
2. The proposed modification amends the site boundary in the Proposed Submission Local Plan Reg 19 page number 327 inset maps

The policies map currently shows:



Amendments to map



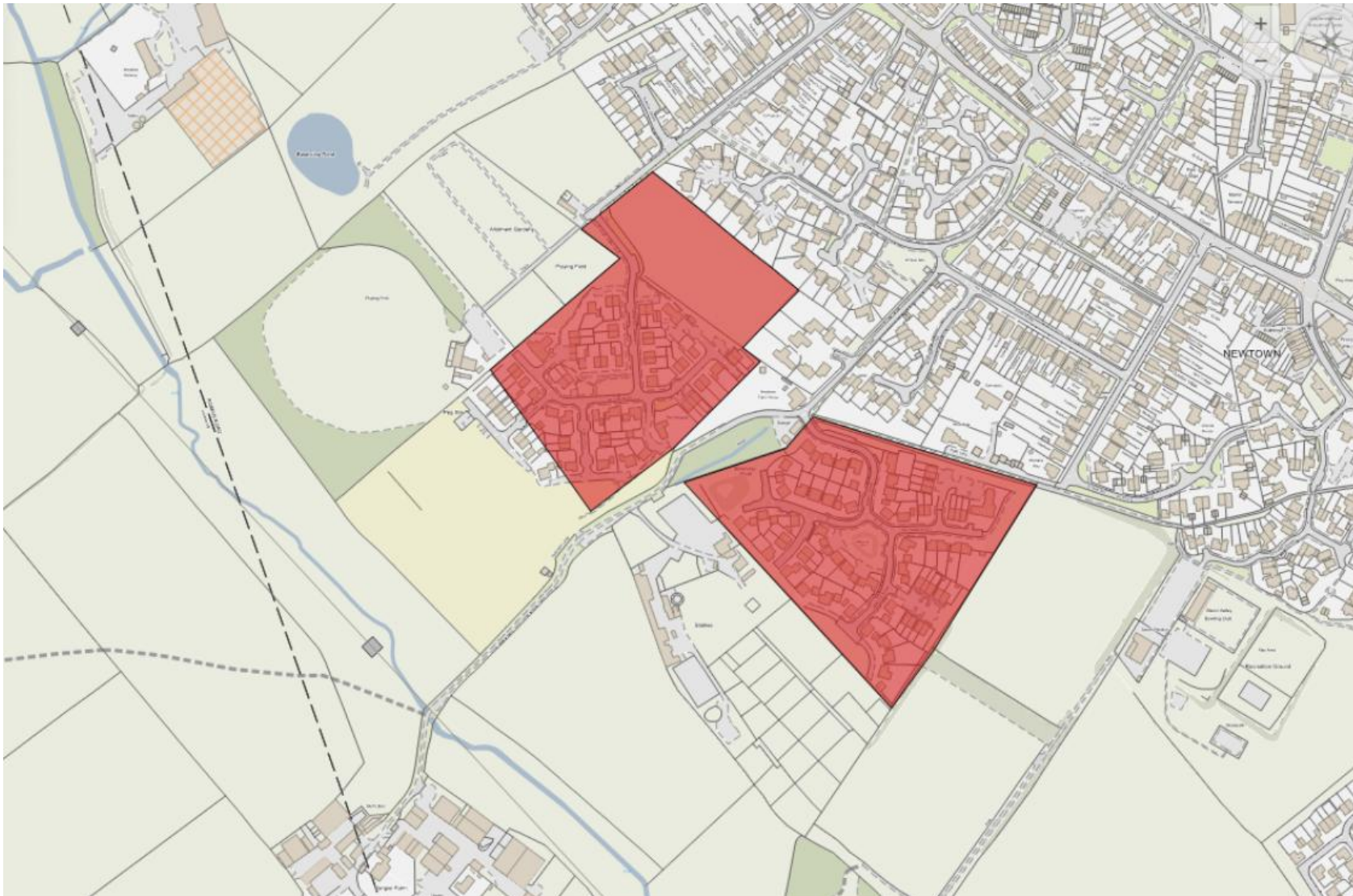
Amendment to W4 Land at Courtenay Road  
Proposed Submission Reg 19 Local Plan Policies Map

#### **4. Change to Policies Map related to Policy BW1**

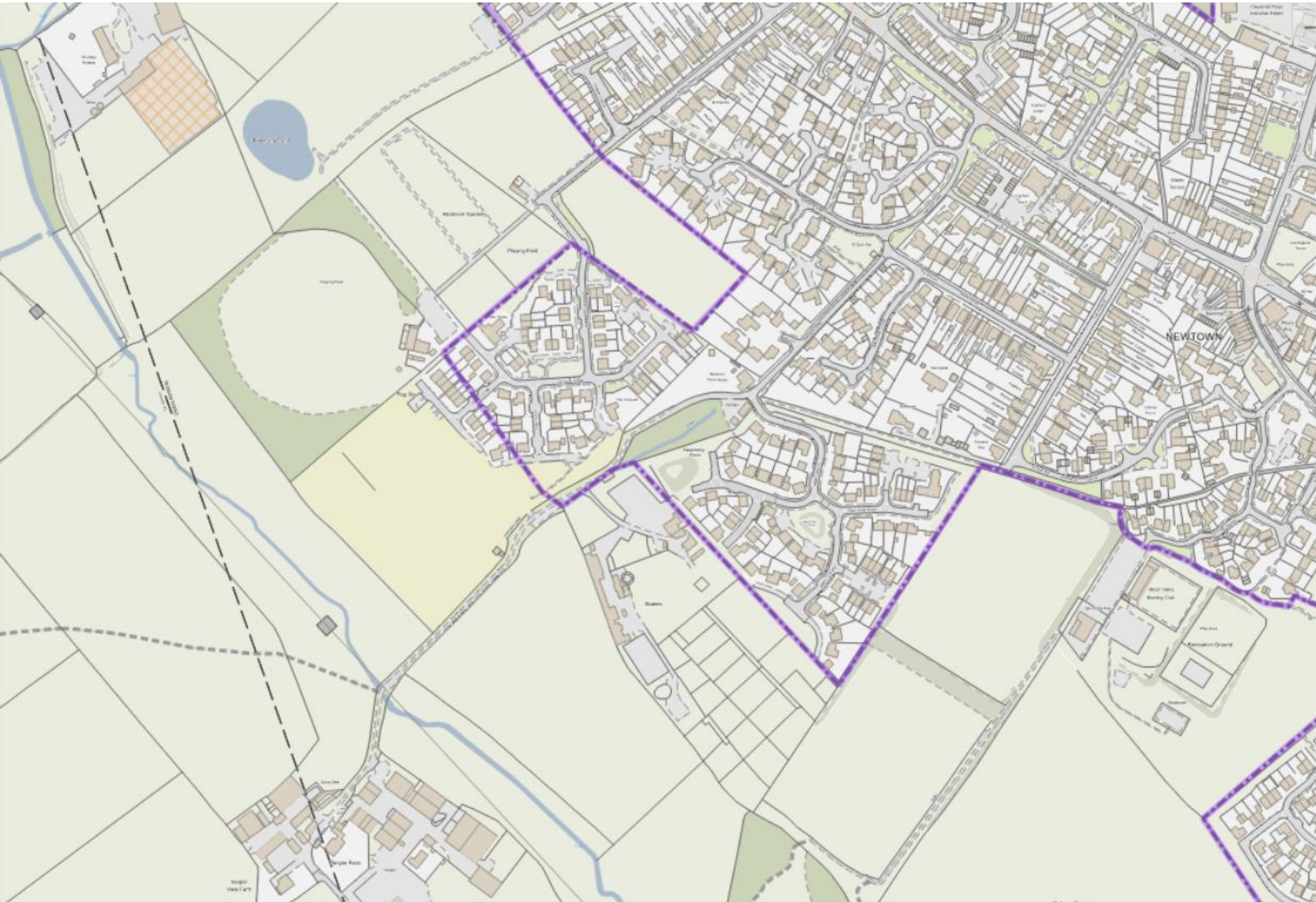
**MM86** - Revise policy map to remove Policy BW1, The Vineyard/Tangier Lane to reflect that the site is completed arising from Main Modification MM86.

Update inset map on page 392 to remove reference to “The Vineyard / Tangier Lane”. Retain settlement boundary.

Currently the printed Local Plan Policies Map shows this:



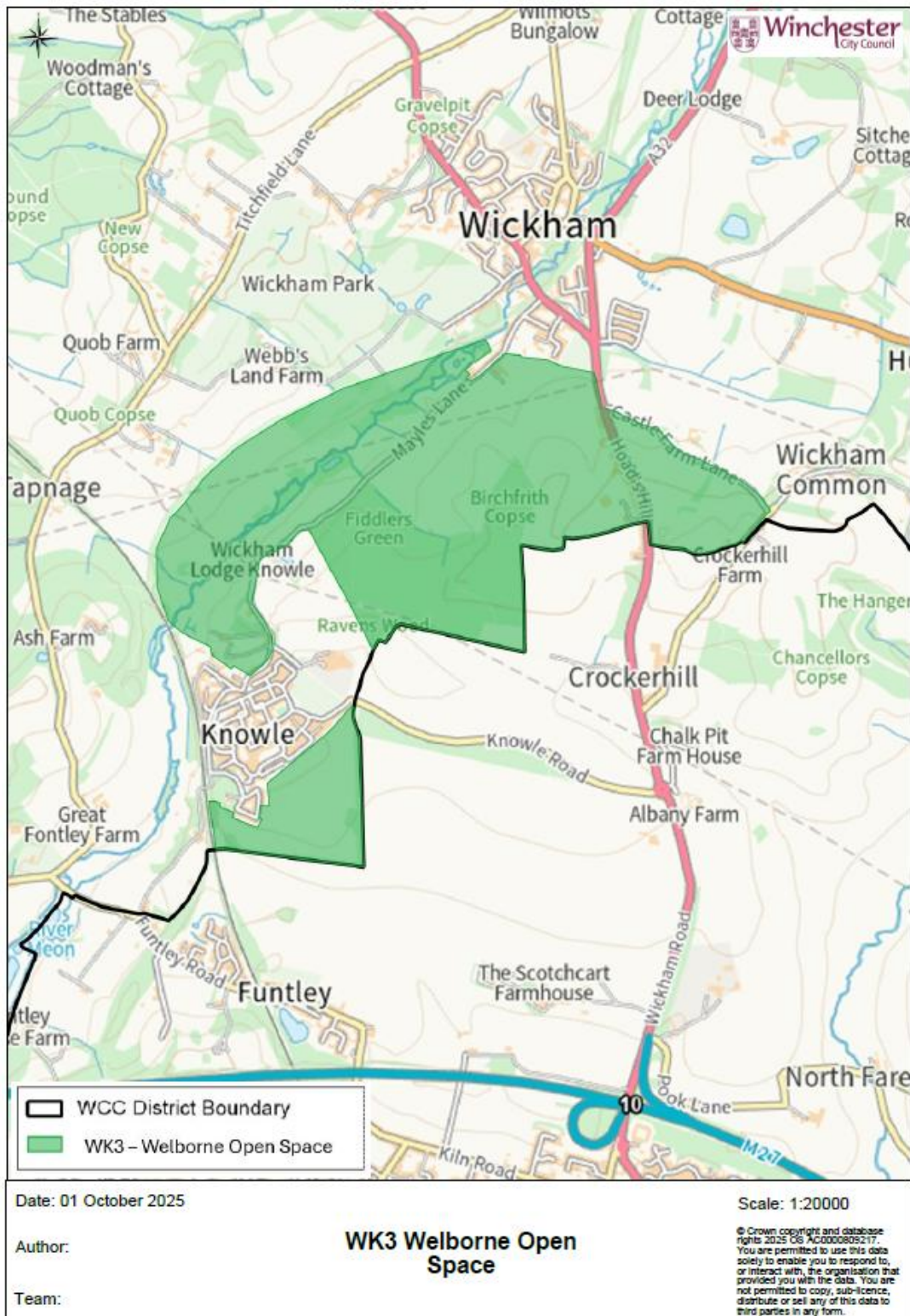
**Amendment to Policies Map - Showing deletion of Policy BW1**



## **5. Change to Policies Map Related to Policy WK3**

**MM105** - Revise policy map to revise boundary of Policy WK3, Welborne Open Space arising from Main Modification MM105 - to reflect the outcome of the Local Plan examination hearing session and the Inspector Note ED38a.

Currently the printed Local Plan Policies Map shows this:





Amendment to Policies Map – Showing modification to Policy WK3

