



Local Nature Recovery Strategy for Hampshire 2025

Part 2: Priorities and Measures



Contents

1. Priorities and Potential Measures 3

Priorities 3

Potential Measures 4

Shortlist of priority outcomes and associated potential measures 5

2. Maps 54

Areas of particular importance for biodiversity (APIB) 56

Measures map 63

Areas that could become of particular importance for biodiversity (ACB) map 72

3. Meeting national environmental objectives 75

1. Priorities and Potential Measures

This section sets out the priorities for nature recovery within Hampshire, and the potential measures that could help deliver those priorities. The identification of priorities and potential measures builds upon the description of the strategy area and its biodiversity and opportunities for nature recovery, set out in Part 1: Introduction and description of strategy area.

Each priority is an outcome (i.e. what is to be achieved), and the potential measures are how the outcome could be achieved. The biodiversity priorities and the related measures enable us to understand the outcomes and actions that will be most effective for nature in a given area. They are intended to inform rather than dictate actions, as the best and most realistic action will also depend on local factors and preferences.

In drafting the priorities and measures for the LNRS for Hampshire, their effectiveness in delivering a broad range of wider environmental benefits has been an important consideration (see Part 1: Introduction). Wider environmental benefits that will be delivered by the LNRS are listed against each priority outcome in the shortlist of priority outcomes and associated potential measures, below.

Priorities

Statutory guidance¹ requires responsible authorities to gather possible priorities from existing published plans and strategies, and from engaging directly with locally active organisations and individuals. Priorities must only be habitat or species focused. The first stage of this process was the creation of a priorities long-list of suggestions from the following sources:

- A series of stakeholder workshops held between January and March 2024.
- An online public survey on priorities for nature recovery.
- A review of local plans and strategies, including local biodiversity action plans and catchment management plans.

The second stage was to select, from the long-list, a shortlist of priorities considered critical for the Strategy to address. This includes priorities for recovering or enhancing biodiversity and the contributions that these can make to wider environmental benefits. An example of wider environmental benefits is how the strategies can include nature-based solutions to address wider

¹ Local Nature Recovery Strategy: what to include - <https://www.gov.uk/government/publications/local-nature-recovery-strategy-what-to-include>

environmental issues, such as air quality, flood risk, and health and wellbeing. The shortlist was informed and agreed by the LNRS supporting authorities and steering group over a period of months, culminating in a workshop held in December 2024.

The aim of the shortlist is to have a set of priorities that:

- Contribute to the National Environmental Objectives (see Appendix 1).
- Address the opportunities and pressures identified in the description of the Strategy area.
- Sufficiently cover the variation of landscapes and ecosystems in the Strategy area.
- Balance the contributions from a range of stakeholders, from local experts through to local residents.
- Is a manageable number where delivery is possible over a reasonable number of years.

The shortlist of biodiversity priorities is presented below, subdivided by habitat and theme. The shortlist also includes relevant potential measures, the biodiversity and wider environmental benefits of delivering each priority, whether the relevant measures have been mapped, and potential funding schemes to enable delivery. Priority species that will benefit from many of these habitat-based measures are also included.

Potential Measures

The LNRS statutory guidance defines a measure as the specific practical action needed to achieve a priority for recovering or enhancing biodiversity. LNRS measures need to focus on what actions can be taken to enhance existing habitats and create new habitats, and must be relevant for the next three to ten years to aid Hampshire's nature recovery.

The mapping of potential measures in this LNRS is based on existing data, available at the time of publication. The mapping should be interpreted flexibly to achieve improvements to biodiversity that support a full range of naturally occurring habitats and species that are appropriate to the soils and landscape and do not exclude actions which subsequent data indicates are appropriate. The ideal would be to aim for a mosaic of habitats as they can support complex ecosystems and diverse wildlife by providing a variety of interconnected habitats, such as open ground, scrub, woodland, wetland and grassland, in close proximity, allowing species to meet all their life cycle needs within a localised area. Mapped measures can be viewed in the measures map (see Section 2, below).

It is important to note that some of the potential measures will not be mapped as they are too generic, apply to large areas of farmland, and apply to many of the habitats and sites mapped on the areas of particular importance for biodiversity (APIB) map and areas that could become of particular importance for biodiversity (ACB) map. As they are listed in the statement of biodiversity priorities, they can be used to inform wildlife friendly land use decisions in future agri-environmental schemes and planning.

It is also important to note that whilst many SSSIs are in unfavourable condition, they are not being mapped with measures given there is separate legislation and management prescriptions that cover them. Any measures which may impact on or are adjacent to an SSSI will need to be discussed and agreed with Natural England.

Shortlist of priority outcomes and associated potential measures

The following section presents the shortlist of priorities subdivided by habitat type and theme, and the potential measures needed to achieve them. Habitats and themes have not been prioritised as all priority outcomes are important to halt and reverse the decline in biodiversity, and deliver wider environmental benefits. Potential measures are not spelt out in detail as every site is different and there is abundant guidance available which is constantly being updated. Specific locations relating to priority outcomes are represented on both the Measures Map and the ACB Map, where they are mappable. Measures are not mapped within national designated sites as explained earlier. There is synergy and overlap between some priority outcomes represented under different habitat/theme headings, e.g. between 'rivers and other watercourses', and 'wetlands, ponds, and ditches'. Main Countryside Stewardship Higher Tier options are provided, which came into force September 2025. A legend for the potential funding schemes is provided at the end of the section.

Priorities marked with an asterix focus on water quality within watercourses and SPZs but do so solely through grassland management. If woodland were to be included as a measure to deliver improved water quality, this could be supported through EWCO, with landowners receiving the Additional Contribution for water quality and riparian buffers. There would also be potential for the Woodland Carbon Code to deliver funding and the future Woodland Water Code - **Woodland Water Code Information Sheet - Forest Research.**



Priority Outcome – Riparian buffer strips created and managed to protect the area’s watercourses and headwaters, along with other potential measures aimed at reducing the amount of nutrients and pollutants entering the watercourses and groundwaters, restoring river health and improving habitat connectivity between river and floodplain.

Potential Measure(s):

R1* - Creation and management of buffer strips up to 10m wide on land next to watercourses.

Measure to create buffer strips to provide new habitat, form links or corridors between other habitats, open up within woodland, and improve water quality by reducing the amount of potential pollutants, such as sediment, pesticides and nutrients entering the watercourse. Preventing livestock accessing the watercourse will help reduce bankside erosion. Planting trees and allowing scrub and woodland to develop where there is none will help shade and cool the watercourse. Where buffer strips overlap built land, they can be ignored. Where they occur on top of culverted streams there may be opportunity to revert the stream back to a natural state.

R2 – Improve the conditions of in-channel physical habitat, such as gravel cleaning to optimise spawning success and the restoration or re-creation of lost or relic meander patterns. Work with the water industry to improve the treatment of water and discharge of effluent from WTWs.

Measures to restore natural watercourse morphology and processes, and minimise effluent discharge into watercourses from wastewater treatment works.

R3* - Reversion of arable land to grassland and management of intensive grassland, with low fertiliser input to reduce nutrient levels

Measure to buffer sensitive aquatic habitats by reverting arable land to a dense grass sward or by reducing stocking and fertiliser inputs on improved grassland; to reduce risk of soil erosion, compaction and surface runoff, and reduce the amount of nutrients entering the watercourse. Reducing surface runoff may also help to reduce the risk of flooding.

R4* - Flood mitigation on permanent grassland – making space for water by managing and enhancing river/floodplain habitat connectivity.

Measure to intercept and slow surface runoff from rainfall events and provide space for water from streams and rivers to be stored during a flood event to help manage flood risk and enable the re-connection of the river with the floodplain. Will improve connectivity between river and floodplain, allowing the development of a variety of naturally occurring floodplain habitats including wet woodland, grazing marsh, fen and reedbed.

R5* - Application of very low nitrogen input to slow or reverse nutrient levels in groundwaters.

Measure to reduce nutrient input to grassland in highly targeted locations to help slow or reverse nutrient levels in groundwater. Targeted at designated Groundwater Source Protection Zones SPZs (Zone 1). Measures to improve species diversity within these areas would be desirable.

Biodiversity and wider environmental benefits:

- Improves water quality for people and wildlife by intercepting, filtering and absorbing sediment, pesticides, and nutrients from adjacent agricultural land use and urban drainage.
- Reduces the use of fertilisers, pesticides and other pollutants close to and entering watercourses, improving water quality and improving farm business profitability.
- Improves biodiversity value within the river habitat.
- Helps to buffer watercourses from the effects of livestock trampling of banks and headwaters, reducing habitat damage and the need for land management intervention.
- Acts as natural floodplain, absorbing and slowing floodwaters during heavy rainfall or high flow events, reducing flood risk for communities.
- Provides valuable habitat corridors through the landscape, improving species migration and promoting genetic variation.
- Improves carbon storage and sequestration through vegetation growth, contributing to climate change mitigation.
- Increases the resilience of watercourses and associated species to the effects of climate change, e.g. river cooling.



Mapped on Measures Map?

R1* - Buffers up to 10m wide from edge of bank or centre lines have been mapped along all rivers and streams except where they pass through nationally designated sites and lakes. Where rivers and streams pass through urban areas this does mean some developed land may inadvertently be incorporated.

R2 – Applies to all main rivers where they occur as polygons on OSMM (so excluding river line data) and excluding stretches of river that that are nationally designated.

R3* and R4* - Floodplains have been mapped where this measure might apply to areas mapped as G2 for floodplain grazing marsh.

R5* - SPZs are mapped separately.

Potential Funding Streams:

R1* - Countryside Stewardship HT options CSW25, Water Environment Improvement Fund (WEIF), Chalk Partnership Fund.

R2 – Countryside Stewardship HT option CSW25, (WEIF), Chalk Partnership Fund.

R3* - Countryside Stewardship HT options CSW7 and CSW8; Sustainable Farming Incentive (SFI) WBD8; nutrient mitigation (NM), (WEIF), Chalk Partnership Fund.

R4* - Countryside Stewardship options CSW12, CSW15, CSW16 and CSW22, Biodiversity Net Gain (BNG), (WEIF), Chalk Partnership Fund.

R5* - Countryside Stewardship option CSW13; Sustainable Farming Incentive (SFI) WBD8; nutrient mitigation (NM), (WEIF).

Priority Outcome – Mink populations along the county’s watercourses are controlled.

Potential Measure(s):

R6 – Mink Control.

Measure to control/eradicate mink to support the return and re-establishment of water voles. Continue to monitor for presence.

Biodiversity and wider environmental benefits:

- Supports the return and re-establishment of water vole populations and decreases the impact of mink on a range of other mammals, birds and fish, improving the health of the river ecosystem and people’s enjoyment of it.
- Makes riparian animal species populations, including water voles, more resilient to the effects of climate change.

Mapped on Measures Map?

Mapped for all rivers and streams. ‘Water vole alert’ data exists for stretches of river where water voles have been recorded, alongside mink records. See

[The National Water Vole Database Project | The Wildlife Trusts](#)

Potential Funding Streams:

Countryside Stewardship option CSP21, Water Environment Improvement Fund (WEIF).

Priority Outcome – Road surface water runoff is intercepted by natural flood management structures, with no direct pathways to watercourses.

Potential Measure(s):

R7 - Reduce the impact of road and urban runoff into watercourses.

Reduce the impact of road and urban runoff by improving existing infrastructure or by filtering run-off with “natural barriers”, such wetlands/reedbeds or channels built alongside the busiest roads to prevent pollution flowing into rivers and canals.

Biodiversity and wider environmental benefits:

- Improves water quality in watercourses for people and wildlife, by intercepting, filtering and absorbing sediment, salt and other chemicals from road surface water runoff.
- Enhances biodiversity where natural flood management drainage solutions are employed, e.g. reedbeds and attenuation ponds.
- Intercepts and slows road derived surface water runoff during heavy rainfall or high flow events, reducing flood risk for communities.

Mapped on Measures Map?

Applies to all mapped riparian buffers.

Potential Funding Streams:

Highways Authority and National Highways.

Priority Outcome – Barriers to fish movement along rivers and streams are removed or circumvented.

Potential Measure(s):

R8 – Removal of fish barriers.

Measures to remove barriers to fish passage (weirs, dams, impoundments, culverts etc.) that can restrict the upstream and downstream movement of fish, preventing access to important spawning and feeding areas.

Biodiversity and wider environmental benefits:

- Allows migration of fish, including eel and salmon, along Hampshire's rivers and streams, to feed and spawn, enhancing important fish populations and improving the health of the river ecosystem.
- Makes fish populations more resilient to the effects of climate change.
- Restores natural processes by reconnecting fragmented rivers.
- Reduces flooding by restoring natural floodplain connectivity.
- Creates diverse habitats for aquatic and terrestrial wildlife.

Mapped on Measures Map?

Mapped – as small polygons on all rivers and streams.

Potential Funding Streams:

Water Restoration Fund, Water Companies (e.g. Water Industry National Environment Programme (WINEP)), Water Environment Improvement Fund (WEIF).



Credit: Dieter Henke

Priority Outcome – Bankside trees are managed.

Potential Measure(s):

R9 - Managing bankside trees.

Measures to manage bankside trees either to reduce overshading and allow for the growth of bankside and in-channel vegetation, or increase shade to provide cooling. For cooling, the Environment Agency recommends 50% of the water surface is covered with dappled shade or for chalk streams shading of about 30%, where in-channel macrophytes need to be considered.

Biodiversity and wider environmental benefits:

- Helps to reduce overshading, allowing the growth of bankside flora and in-channel vegetation.
- Aids bank stabilisation, reducing the need for land management intervention.
- Provides river cooling where shade is deficient, increasing the river ecosystem's resilience to the effects of climate change.

Mapped on Measures Map?

Only mapped where the measure has been identified in a particular scheme. Otherwise, a generic measure.

Potential Funding Streams:

Countryside Stewardship option TE10; Local Planning Authority funding; water company funding, Water Environment Improvement Fund (WEIF).



Priority Outcome – Invasive non-native species (INNS) (aquatic and riparian) are controlled, and preferably eradicated.

Potential Measure(s):

NN1 - Control and, where possible, eradicate invasive non-native aquatic and riparian species.

Measures to reduce and eradicate severe infestations of invasive non-native species such as Himalayan balsam, orange balsam, Japanese knotweed, American skunk cabbage, aquatic plants such as floating pennywort and New Zealand pigmyweed, and animals such as signal crayfish, the green frog and other aquatic species, to restore wildlife value and allow native plants and animals to re-establish.

Biodiversity and wider environmental benefits:

- Improves water quality for people and wildlife.
- Improves the ability for native in-channel and riparian biodiversity to flourish, and aids bank stability, reducing the need for land management intervention.
- Reduces the long-term cost of INNS management and clearance on riparian businesses and managers.
- Improves invertebrate diversity and fish spawning habitat, improving the health of the river ecosystem.

- Reduces the risk of localised flooding on communities.

Mapped on Measures Map?

Mapped along various watercourses and wetlands where known to be an issue. For rhododendron and other invasive woodland species see measure W9.

Potential Funding Streams:

Countryside Stewardship option CSP13/14/15 , Water Environment Improvement Fund (WEIF).

Priority Species that will benefit from the creation and management of riparian buffer strips and improvements to watercourses and their headwaters:

White-clawed crayfish, southern damselfly, two-tone reed beetle, fine-lined pea mussel, Desmoulin's whorl snail, grey long-eared bat, and species listed in the following priority species assemblages (Part 3: Species recovery) 'chalk streams, other rivers including the New Forest rivers and streams', and 'birds – birds of rivers, lakes and reedbeds'.

Priority Outcome – Fens are created, restored and managed.

Potential Measure(s):

FR1 - Creation, restoration and management of fen habitat, including valley mires.

Measures to create new areas of fen priority habitat on land with low wildlife value, particularly around existing wetland habitats, and to maintain and restore priority fen habitat. Any removal of scrub/woodland would be subject to the Government's Open Habitats Policy - **When to convert woods and forests to open habitat: operations note 68 - GOV.UK**. Valuable wet woodland to be retained and managed through rotational coppicing for example. Requires high water levels sustained by a natural, unpolluted water supply which will support a diverse range of target fen species.

Biodiversity and wider environmental benefits:

- Provides valuable habitat for a wide range of species, including many rare specialist species.
- Increases the abundance of breeding waders, and wintering wildfowl and wading birds, through the creation and management of wet grassland.
- Provides valuable habitat corridors and stepping stones through the landscape, improving species migration and promoting genetic variation.
- Allows for the recruitment of species from locally adapted sources, promoting genetic diversity.
- Improves water quality for people and wildlife by intercepting, filtering and absorbing sediment, pesticides and nutrients from adjacent agricultural land and urban drainage.
- Improves carbon storage and sequestration through vegetation growth and development of wetland soils, contributing to climate change mitigation.
- Enhances the resilience of wetlands and associated species to the effects of climate change.

- Reduces the risk of flooding on communities by absorbing and storing floodwaters during periods of high rainfall and storm events.

Mapped on Measures Map?

Potential areas for fen creation are mapped using the opportunity mapping as a guide, to buffer, expand or connect to existing wetland areas. Also includes areas of fen in poor condition.

Potential Funding Streams:

Countryside Stewardship options CWT13 and CWT14; biodiversity net gain (BNG); nutrient mitigation (NM).

Priority Outcome – Reedbeds are created, restored, and managed.

Potential Measure(s):

FR2 - Creation, restoration and management of reedbed.

Measures to create new areas of reedbed priority habitat on land that is currently of low wildlife value and to maintain and restore priority reedbed habitat (over 2ha for CS options) - to ensure open reed-dominated vegetation on waterlogged ground, interspersed with open water features along ditch lines and pond areas sustained all year round, and to support healthy populations of target reedbed species. Consider also commercial reedbeds for the treatment of wastewater, and for thatching reeds (may not be eligible for CS).

Biodiversity and wider environmental benefits:

- As per Potential Measure FR1, above.

Mapped on Measures Map?

Potential areas for reedbed creation are mapped using the opportunity mapping as a guide, to buffer, expand or connect to existing wetland areas.

Potential Funding Streams:

Countryside Stewardship options CWT13 and CWT14; biodiversity net gain (BNG); nutrient mitigation.

Priority Outcome – Wet grassland is created from arable or temporary grassland, and managed.

Potential Measure(s):

WB1 - Creation and management of wet grassland for breeding waders and wintering waders, and wildfowl.

Measure to increase abundance of breeding and wintering waders and wildfowl by creating and managing wet grassland from arable or temporary grassland. To increase nesting and fledgling success and ensure wading birds and wildfowl are able to feed and roost undisturbed. See also Measure F4.

Biodiversity and wider environmental benefits:

- As per Potential Measure FR1, above.

Mapped on Measures Map?

Solent wader and brent geese mitigation (SWBGM) sites are mapped alongside other potential areas for breeding waders and wintering waders and wildfowl identified from the coastal or floodplain grazing marsh opportunity mapping.

Potential Funding Streams:

Countryside Stewardship options CGS19 and CGS20; Solent wader and brent geese mitigation (SWBGM); biodiversity net gain (BNG); nutrient mitigation (NM).

Priority Outcome – Scrapes and gutters are created and managed.

Potential Measure(s):

P3 - Creation of scrapes and gutters.

Creation of scrapes and gutters to provide areas of bare ground to hold water or transport water through wet habitats, and provide feeding areas for waders.

Biodiversity and wider environmental benefits:

- As per Potential Measure FR1, above.

Mapped on Measures Map?

Mapped for specific sites but would apply generally to Solent wader and brent geese mitigation (SWBGM) sites.

Potential Funding Streams:

Countryside Stewardship option WN2.

Priority Outcome – Ditches and ponds of high environmental value are managed (profile and vegetation) and in-field ditches and ponds are buffered.

Potential Measure(s)

P1* - Buffering and managing in-field ponds and high value ditches on grassland or on arable land.

Measures to manage water levels and enhance water quality and wildlife in ponds and high-value ditches from nutrient leaching and sediment runoff, both on grassland and arable. Especially high value ditches that support target species of plants, birds, mammals and invertebrates.

Biodiversity and wider environmental benefits

- As per Potential Measure FR1, above.

Mapped on Measures Map?

Largely unmapped save for some ponds and ditches known to support notable species such as great crested newts.

Potential Funding Streams:

Countryside Stewardship options CWT1, CWT2 and CWT3.

Priority Outcome – New ponds and networks of ponds are created, and all ponds are managed.

Potential Measure(s):

P2 - Restoring, managing ponds and creating new ponds.

Measures to protect, manage and enhance ponds of high wildlife value including shallow ephemeral ponds, and to create new ponds or networks of ponds (at least three to qualify for Countryside Stewardship), Also to restore the wildlife value of ponds that have become degraded.

Biodiversity and wider environmental benefits:

- As per Potential Measure FR1, above.

Mapped on Measures Map?

P1* and P2 - Largely unmapped save for some ponds and ditches known to support notable species such great crested newts and significant toad populations.

Potential Funding Streams:

P2 - Countryside Stewardship options CWT15, WN5 and WN6; Great Crested newt (GCN) licencing.

Priority Outcome – Large water bodies are restored and managed.

Potential Measure(s):

P4 - Restoration and management of large water bodies.

Measure to restore the wildlife value of lakes that have become degraded. Includes management of water levels, scrub management, control of invasive non-native species, fish removal, bird control and de-silting.

Biodiversity and wider environmental benefits:

- As per Potential Measure FR1, above.

Mapped on Measures Map?

Several lakes including flooded gravel pits have been mapped.

Potential Funding Streams:

Countryside Stewardship option CWT16; Biodiversity net gain (BNG).

Priority Species that will benefit from expansion, enhancement and management of wetlands, ponds and ditches:

Southern damselfly, two-tone reed beetle, scarce four-dot pin-palp, Desmoulin's whorl snail, spangled diving beetle, brilliant emerald dragonfly, brown galingale, natterjack toad, and species listed in the following priority species assemblages (Part 3: Species recovery) 'birds of rivers, lakes and reedbed', 'birds - breeding waders – wet grassland and heathland', 'birds - wintering birds (shore and grassland)', 'ponds for amphibians', 'ephemeral and shallow ponds which also occur outside the New Forest SSSI', 'calcareous sedge communities', and 'wet woodland'.

Species-rich grasslands - includes lowland calcareous grassland, dry acid grassland, lowland meadows, purple moor grass and rush pasture, and floodplain grazing marsh, including mosaics of these with managed scrub and other habitats such as fen and heathland

Priority Outcome – All existing species-rich grassland in positive management.

Potential Measure(s):

G1 - Management and enhancement of species-rich grassland. These are split further into G1 - Lowland meadow (LMW), G1 – Lowland acid grassland (LAG), G1 - Purple moor grass and rush pasture (PMP), G1 - Lowland calcareous grassland (LCG), and G1 - Floodplain grazing marsh (FGM).

Measure to manage and enhance priority grasslands to maintain or increase the presence and abundance of important plant species and many other priority species, such as bees, butterflies and birds. Requires grazing, hay cutting, or a mixture of both, with preferably no application of manure, fertiliser, pesticide or supplementary feed. Maintain a range of plant heights suitable for invertebrates, birds or other priority species.

G4 - Management of scrub – applies across all types of grassland.

Measure to reduce or manage scrub to restore and maintain priority grassland and open habitat mosaic. Also, to manage scrub for those species present that depend on managed scrub, for example turtle dove and brown hairstreak. Includes removing wet scrub/scrub woodland to restore to fen meadow whilst being mindful of retaining valuable wet woodland. Any removal of scrub woodland would be subject to the Governments Open Habitats policy - **When to convert woods and forests to open habitat: operations note 68 - GOV.UK**

Biodiversity and wider environmental benefits:

- Helps maintain and enhance species-rich grassland for its associated wildlife.
- Helps to manage scrub at desired levels whilst maintaining structural diversity for wildlife.
- Allows for the recruitment of species from locally adapted sources, promoting genetic diversity.
- Increases the resilience of grasslands and associated species to the effects of climate change.
- Improves grassland for a range of specialist species.
- Provides agricultural benefits through increased pollinator populations.

Mapped on Measures Map?

G1 - Such sites have been mapped where more positive management would be beneficial. They may appear on the Measures map if undesignated.
G4 - All SINC grasslands and other open habitat are mapped where known to be in poor condition due to scrub encroachment.

Potential Funding Streams:

G1 - Countryside Stewardship option CGS22.
G4 - Countryside Stewardship option CWD7 SB1 and SB2; Biodiversity net gain (BNG).

Priority Outcome – Degraded species-rich grassland restored back to species-rich grassland.

Potential Measure(s):

G2 - Restoration of grassland towards species-rich grassland. These are split further into G2 - Lowland meadow (LMW), G2 – Lowland acid grassland (LAG), G2 - Purple moor grass and rush pasture (PMP), G2 Lowland calcareous grassland (LCG), and G2 Floodplain grazing marsh (FGM).

Measures to restore grassland back to a priority species rich grassland to increase the abundance of important plant species and many other priority species, such as bees, butterflies and birds. They tend towards semi-improved or neglected grasslands that still support patches of relic species-rich grassland. Requires appropriate grazing and/or hay cutting regimes with preferably no application of manure, fertiliser, pesticide or supplementary feed. Use of green hay from local donor meadows is recommended to re-introduce species back into the sward. Maintain a range of plant heights, including small patches of scrub, suitable for invertebrates, birds or other priority species.

G4 - Management of scrub – applies across all types of grassland.

Measure to reduce or manage scrub to restore and maintain priority grassland and open habitat mosaic. Also, to manage scrub for those species present that depend on managed scrub, for example turtle dove and brown hairstreak. Includes removing wet scrub/scrub woodland to restore to fen meadow whilst being mindful of retaining valuable wet woodland. Any removal of scrub woodland would be subject to the Governments Open Habitats policy - **When to convert woods and forests to open habitat: operations note 68 - GOV.UK**

Biodiversity and wider environmental benefits:

- Helps re-establish species-rich grassland through appropriate grazing and cutting regimes.
- Improves grassland structural diversity to create nesting, foraging and breeding opportunities for grassland species.
- Improves grassland for a range of specialist species.
- Removes encroaching scrub and maintains structural diversity for wildlife.
- Improves carbon storage and sequestration through improved vegetation growth and soil condition.
- Increases the resilience of the habitat and associated species to the effects of climate change.
- Provides agricultural benefits through increased pollinator populations.

Mapped on Measures Map?

G2 and G4 - All SINC grasslands in known poor condition are mapped, along with other areas of semi-improved or neglected grassland which may support areas of relic species-rich grassland and are covered by the opportunity mapping. G4 will apply to any of these areas that require some management of scrub.

Potential Funding Streams:

G2 - Countryside Stewardship options CGS22; biodiversity Net Gain (BNG); nutrient mitigation (NM).

G4 - Countryside Stewardship options SB1; biodiversity Net Gain (BNG).

Priority Outcomes – New areas of species-rich grassland created (including habitat expansion), linking existing areas of grasslands.

Potential Measure(s):

G3 - Creation of species-rich grassland, particularly from arable reversion. These are split further into G3 - Lowland meadow (LMW), G3 - Lowland acid grassland (LAG), G3 - Purple moor grass and rush pasture (PMP), G3 Lowland calcareous grassland (LCG), and G3 - Floodplain grazing marsh (FGM).

Measure to create grassland that has the potential to become a priority grassland and establish a wide range of important plant species, which will attract many other species such as bees, butterflies and birds. Use of local provenance seed sources or green hay from local donor meadows recommended. Will require appropriate grazing and/or hay cutting regimes with preferably no application of manure, fertiliser, pesticide or supplementary feed. Maintain a range of plant heights suitable for invertebrates, birds or other priority species.

R3* - Reversion of arable land to grassland and management of intensive grassland, both with low fertiliser input.

Measure to buffer sensitive aquatic habitats by reverting arable land to a dense grass sward or by reducing stocking and fertiliser inputs on improved grassland; to reduce risk of soil erosion, compaction and surface runoff, and reduce the amount of nutrients entering the watercourse. Reducing surface runoff may also help to reduce the risk of flooding. This measure could also be applied in SPZs (Zone 1).

Biodiversity and wider environmental benefits:

- Improves grassland connectivity and provides valuable habitat corridors through the landscape, improving species migration and genetic exchange.
- Increases availability of suitable habitat for specialist species.
- Allows for the recruitment of species from locally adapted sources, promoting local provenance.
- Provides a range of ecosystem services, including air purification, soil stabilisation and water filtration.
- Helps protect soil and water resources and reduces the risk of flooding and sedimentation in water bodies, reducing flood risk for communities.
- Increases carbon storage and sequestration, through improved vegetation growth and soil condition.
- Makes grasslands and associated species more resilient to the effects of climate change.
- Provides agricultural benefits through increased pollinator populations.

Mapped on Measures Map?

G3 - Potential areas are mapped using the opportunity mapping as a guide, to buffer, expand or connect to existing priority grasslands and other habitats.

R3* - Floodplains and SPZs (R5*) have been mapped where this measure could be applied.

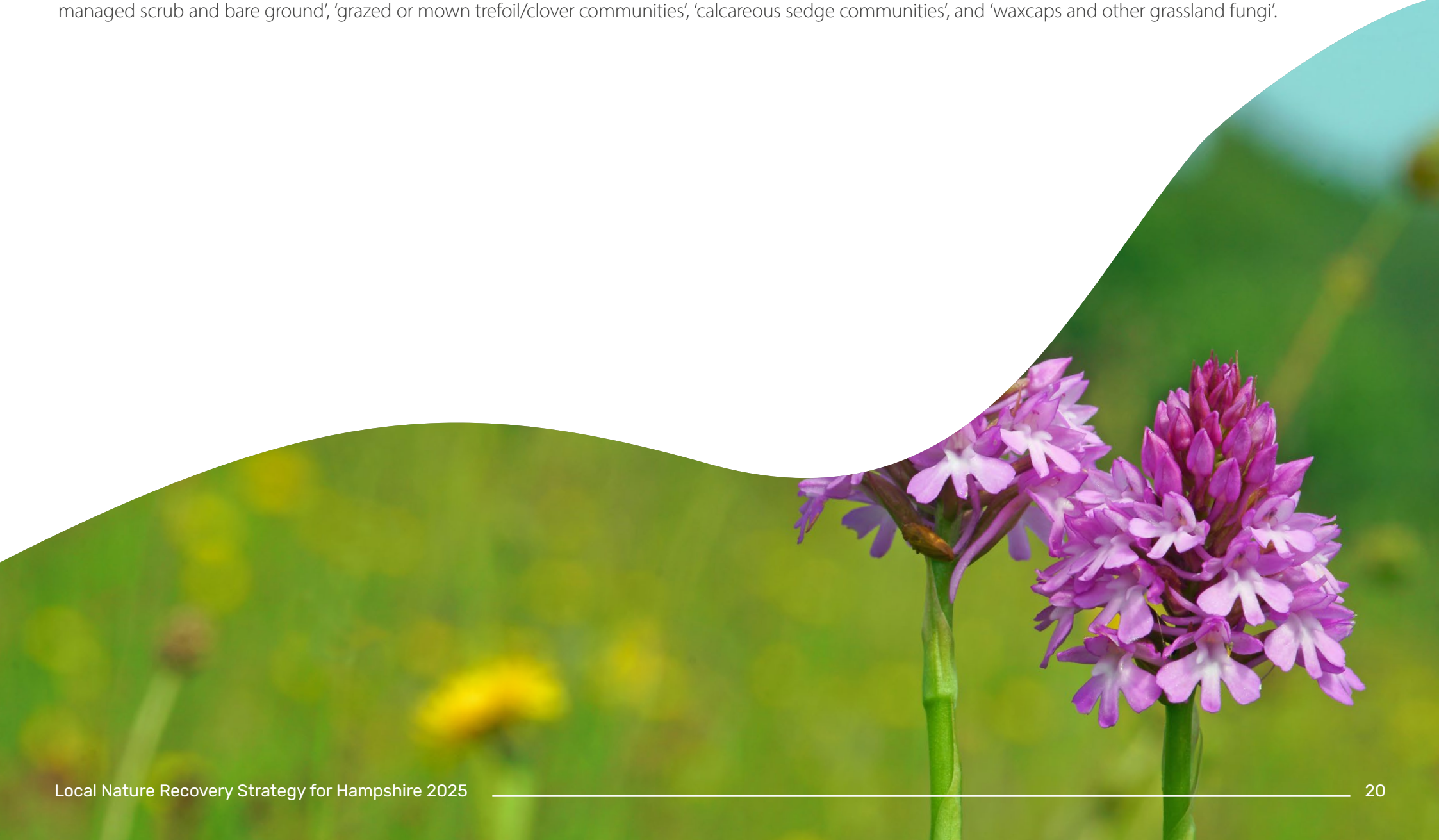
Potential Funding Streams:

G3 - Countryside Stewardship option CGS22, CGS18, GR1 and GR2; biodiversity net gain (BNG); nutrient mitigation (NM).

R3* - Countryside Stewardship options CGS18; Sustainable Farming Incentive (SFI) WBD8; nutrient mitigation (NM).

Priority Species that will benefit from expansion and management of species-rich grassland:

Priority species - green-winged orchid, juniper, field cow-wheat, marsh fritillary, Duke of Burgundy, striped lychnis, forester, smart-banded hunchback and hornet robberfly, and species listed in the following priority species assemblages (Part 3: Species recovery): 'grazed chalk grassland with structural diversity including managed scrub and bare ground', 'grazed or mown trefoil/clover communities', 'calcareous sedge communities', and 'waxcaps and other grassland fungi'.



Heathland and acid grassland mosaics

Priority Outcome – All existing heathland and acid grassland mosaic in positive management.

Potential Measure(s):

H1 - Management and enhancement of lowland heathland including scrub management.

Measure to manage heathland to maintain a diverse mosaic of vegetation (wet or dry heath, transitional heaths, acidic grassland & mires, scrub and coastal heaths) including pioneer heath and bare ground, which benefits invertebrates, birds, reptiles and plants, including nightjar, woodlark, smooth snake and sand lizard, where within their range. Manage features for wildfire management.

H4 - Bracken control preferably by mechanical means.

Measure to control bracken to restore or maintain high value heathland/acid grassland and their associated wildlife.

H5 – Managing public access and dogs.

Educating the public especially around the control of dogs to reduce unfettered access and impact on ground nesting birds and reptiles on heathland.

Biodiversity and wider environmental benefits:

- Helps to maintain good condition of heathland and acid grassland mosaic for its associated wildlife.
- Helps to manage scrub and tree growth at desired levels for wildlife.
- Improves the habitat's structural diversity to create nesting, foraging, and breeding opportunities for associated species.
- Improves the habitat for a range of specialist species.
- Allows for the recruitment of species from locally adapted sources, promoting genetic diversity.
- Makes the habitat and associated species more resilient to the effects of climate change.
- Provides agricultural benefits through increased pollinator populations.

Mapped on Measures Map?

H1 - Mapped for those areas where more positive management would be beneficial.

H4 - Heathland SINC's mapped where bracken is known to be a problem.

H5 - Heathland SINC's mapped where dogs are a known issue.

Potential Funding Streams:

H1 - Countryside Stewardship option CLH1 and CUP18; Biodiversity Net Gain (BNG).

H4 - Countryside Stewardship options SB4, SB5 and SP3; Biodiversity Net Gain (BNG).

H5 – Local authorities; Ministry of Defence; Forestry England; suitable alternative natural greenspace (SANG) funding.

Priority Outcome – Restoration of degraded heathland and acid grassland mosaic.

Potential Measure(s):

H2 - Restoration of heathland from forestry and woodland, including scrub.

Measure to re-establish lowland heathland on forested land or land recently colonised by scrub/secondary woodland, to create a diverse mosaic structure, including undisturbed bare ground, varied heathland vegetation types and some wooded/scrub heath, and subject to the Governments Open Habitats policy - **When to convert woods and forests to open habitat: operations note 68 - GOV.UK**. Manage features for wildfire management. May include need for some re-wetting to restore wet heath/valley mire.

H4 - Bracken control preferably by mechanical means.

Measure to control bracken to restore or maintain high value heathland/acid grassland and their associated wildlife.

Biodiversity and wider environmental benefits:

- Helps re-establish heathland and acid grassland mosaic through appropriate grazing regimes.
- Improves habitat structural diversity to create nesting, foraging and breeding opportunities for associated and specialist species.
- Allows for the recruitment of species from locally adapted sources, promoting genetic diversity.
- Removes encroaching scrub and trees and maintains structural diversity for wildlife.
- Improves carbon storage and sequestration through improved vegetation growth and soil condition.
- Increases the resilience of the habitat and associated species to the effects of climate change.
- Provides agricultural benefits through increases in pollinator population.

Mapped on Measures Map?

H2 - All heathland SINCs are mapped where known to be in poor condition either due to lack of grazing (or mowing), scrub encroachment, low water table or covered by secondary/plantation woodland known to support relic heath/acid grassland communities.

H4 - All heathland SINCs mapped where bracken is known to be a problem.

Potential Funding Streams:

H2 - Countryside Stewardship option CLH2 and CUP18; Biodiversity Net Gain (BNG).

H4 - Countryside Stewardship options SB4 and SB5; Biodiversity Net Gain (BNG).

Priority Outcome – New areas of heathland and acid grassland mosaic created, and existing areas expanded, improving connectivity with existing areas of habitat. Includes agricultural land and restoration of mineral workings.

Potential Measure(s):

H3 - Creation of heathland from arable land, grassland and mineral workings.

Measure to create lowland heathland, to include mosaics with lowland acid grassland, on arable or improved grassland sites that have largely lost their heathland seed bank. And to restore to heathland following mineral extraction. Ideally sites should be adjacent to existing heathland to increase their extent and chances of success and decrease fragmentation.

Biodiversity and wider environmental benefits:

- Improves heathland and acid grassland mosaic connectivity.
- Provides valuable habitat corridors through the landscape, improving species migration and genetic exchange.
- Allows for the recruitment of species from locally adapted sources, promoting local provenance.
- Increases suitable habitat for specialist species.
- Provides a range of ecosystem services, including air purification, soil stabilisation and water filtration.
- Helps protect soil and water resources and reduces the risk of flooding and sedimentation in water bodies reducing flood risk for communities.
- Can increase carbon sequestration through improved vegetation growth and soil condition.
- Makes heathland and acid grassland mosaic and associated species more resilient to the effects of climate change.
- Provides agricultural benefits through increased pollinator populations.

Mapped on Measures Map?

Potential areas are mapped using the opportunity mapping as a guide, to buffer, expand or connect to existing areas of heathland.

Potential Funding Streams:

Countryside Stewardship option CLH3; Biodiversity Net Gain (BNG).

Priority Species that will benefit from expansion and management of heathland and acid grassland mosaics:

Hornet robberfly, smart-banded hunchback, heath cudweed, heath lobelia, grass-poly, common butterwort, wood bolete, nail fungus, field cricket and other species listed in the following priority species assemblages (Part 3: Species recovery): 'birds - breeding waders – wet grassland and heathland', 'birds - heathland birds', 'dry heaths with sand and gravel exposures', and 'other heathlands occurring inside and outside the New Forest SSSI'.



Credit: HBIC

Priority Outcome – Existing woodlands enhanced through suitable active management.

Potential Measure(s):

W2 - Actively managing woodland.

This measure is aimed at bringing existing woodland back into active management to improve its biodiversity value and structure through thinning, selective felling, coppicing, natural regeneration and planting, ride/glade widening/creation, scrub management etc, and make it more resilient to climate change. The re-wetting and management of water levels is important for areas of Wet Woodland Priority habitat.

W3 – Managing woodland for priority woodland species.

This measure is aimed at bringing woodland back into active management which are known to support specialist species such as barbastelle & Bechstein's bat, dormice, pearl-bordered fritillary and a suite of other species listed on the LNRS priority list. Restocking with a broader range of tree species and provenances appropriate to the site conditions and future predicted climate scenarios must also be considered to make the woodland more resilient to climate change. See also

Woodland Wildlife Toolkit (sylva.org.uk)

W4 – Soft woodland edges on adjacent farmland.

By creating new 'soft' woodland edges on farmland adjacent to woodland, this will provide additional transitional habitat for plants, birds, invertebrates, small mammals and other wildlife.

W6 - Management and control of deer and grey squirrel populations.

This measure is aimed at controlling deer and grey squirrel populations to reduce browsing and tree damage, improve woodland structure and species diversity, and increase resilience to climate change. Deer and grey squirrel control is most effective if undertaken in a coordinated manner at a landscape scale. Actions would be appropriate beyond the mapped areas and will also be beneficial to non-woodland habitats.

W8 - Improving access and educational opportunities within woodlands.

Measures to manage and improve public access (including dogs) and provide educational opportunities within woodlands which will improve physical and mental well-being and encourage engagement with nature. Impacts on woodland biodiversity will need to be carefully managed.

W9 - Control of rhododendron, laurel and other invasive non-native woodland species.

Measures to control and eradicate rhododendron and other non-native species will improve natural regeneration and overall biodiversity.

W10 – Raise awareness of and monitor tree pests and diseases. Felling of diseased trees.

Measures to increase awareness of and monitor incidence of tree pests and diseases and prevent disease spreading. Presence of tree pests and diseases to be reported to **TreeAlert**.

Biodiversity and wider environmental benefits:

- Reinvigorates natural regeneration within our native deciduous woodlands through thinning/selective felling and coppicing.
- Improves structural and age diversity in the woodland, which in turn creates nesting, foraging and breeding opportunities for woodland wildlife.
- Improves woodland for a range of specialist species.
- Allows for the recruitment of plants from locally adapted seed sources, promoting genetic diversity.
- Improves carbon storage and sequestration through improved vegetation growth.
- Makes woodlands and associated species more resilient to the effects of climate change.
- Improves the viability of woodland businesses.



Credit: Jonathan Rau

Mapped on Measures Map?

- W2 - Woodland SINC are mapped where they are known to be unmanaged and in poor condition.
- W3 - Woodland SINC are mapped where they support a suite of LNRS priority species.
- W4 – Mapped occasionally on specific sites.
- W6 – Mapped only where it has been specified in a plan or report.
- W8 – Mapped only where it has been specified in a plan or report.
- W9 - Not mapped unless specified in SINC woodlands mapped under measure W2.
- W10 – Mapped on specific sites.

Potential Funding Streams:

- W2 - Countryside Stewardship option CWD2, CWS8 and FY6; biodiversity Net Gain (BNG).
- W3 - Countryside Stewardship options CSP9.
- W4 - Countryside Stewardship option CWD3; biodiversity Net Gain (BNG); nutrient mitigation (NM).
- W6 - Countryside Stewardship options CWS1, CWS3, FG9.
- W8 – Countryside Stewardship options CPAC1, CPAC4 and EWCO - Woodland creation with access will receive higher payments under EWCO – contributions for woods close to settlements (£600/ha) and with recreational access (£3700/ha).
- W9 - Countryside Stewardship options CSP12, SB5 and SB6.
- W10 - Countryside Stewardship option SB1; grant support is available for restocking after felling, due to a tree health issue.

Priority Outcome – Plantations on ancient woodlands (PAWs) restored.

Potential Measure(s):

W7 - Restoring plantations on Ancient Woodland Sites back to native woodland.

Converting plantations on ancient woodland sites by using a mix of at least 80% native species and encouraging natural regeneration, to improve biodiversity and resilience to climate change over time. Note – important to safeguard areas of conifer known to support breeding goshawk and other priority species. PAWs predominantly known to support beech or other native species (c55% of total number) will carry the W2 measure.

Biodiversity and wider environmental benefits:

- Reinvigorates natural regeneration within PAWs particularly for ancient woodland species.
- Improves structural and age diversity in the woodland which in turn creates nesting, foraging and breeding opportunities for woodland wildlife and a range of specialist species.
- Allows for the recruitment of plants from locally adapted seed sources, promoting genetic diversity.
- Makes the woodlands and associated species more resilient to the effects of climate change.

Mapped on Measures Map?

Coniferous plantations in ancient woodland SINC which directly abut (within 10m) ancient semi-natural woodland are mapped to ensure greatest chance of recolonisation of ancient woodland flora.

Potential Funding Streams:

Countryside Stewardship option CWS2; Biodiversity Net Gain (BNG).

Priority Outcome – New woodlands created with native tree species linking existing areas of woodland.

Potential Measure(s):

W1 - Creation and management of new native woodland.

This measure is to create and maintain new diverse native woodland including wet woodland in order to improve ecological connectivity between existing ancient and other native woodland and other habitats where there are priority species, to increase dispersal and provide new habitat for these species, to improve resilience to climate change, and enhance the landscape.

W1A – Creation, restoration and management of new native woodland on ‘lost’ ancient woodland sites adjacent to existing ancient woodland.

This measure is to plant new native woodland on sites previously shown as ancient woodland within the last 100 years where the relic ancient woodland flora may still exist in hedge banks and where dispersal from adjacent ancient woodland is likely to be more rapid. Note, the latest Ancient Woodland Inventory Review was only recently approved and so not all ancient woodland lost in the last 20 years has been captured under W1A. Much of it has already been replanted.

W4 – Soft Woodland edges on farmland next to woodland.

By creating new ‘soft’ woodland edges on farmland adjacent to woodland, this will provide additional transitional habitat for plants, birds, invertebrates, small mammals and other wildlife and buffer ancient woodlands.

W5 - Creating and managing successional areas of scrub.

This measure is aimed at creating or extending scrub on arable or improved permanent grassland on land next to existing scrub or woodland areas to create mosaics of open grassland and scrub, particularly for nightingales. A successional scrub habitat will provide food and habitat for invertebrates, birds and mammals as well as specific target species.

W6 - Management and control of deer and grey squirrel populations.

This measure is aimed at controlling deer and grey squirrel populations to reduce browsing and tree damage and improve woodland structure and species diversity and increase resilience to climate change. Deer and grey squirrel control is most effective if undertaken in a coordinated manner at a landscape scale. Actions would be appropriate beyond the mapped areas and will also be beneficial to non-woodland habitats.

W9 - Control of rhododendron, laurel and other invasive non-native woodland species.

Measures to control and eradicate rhododendron and other non-native species will improve natural regeneration of the native flora and overall biodiversity.

W10 – Raise awareness of and monitor tree pests and diseases. Felling of diseased trees.

Measures to increase awareness of and monitor incidence of tree pests and diseases and prevent disease spreading. Presence of tree pests and diseases to be reported to **TreeAlert**.

Biodiversity and wider environmental benefits:

- Improves woodland connectivity and provides corridors for woodland species improving species migration and genetic exchange.
- Increases carbon storage and sequestration through improved vegetation growth.
- Increases availability of suitable habitat for specialist species.
- Makes woodlands and associated species more resilient to the effects of climate change.
- Enhances woodland biodiversity that is dependent on native tree species.
- Improves localised air quality for the benefit of human health.
- Helps protect soil and water resources and reduces the risk of flooding for the benefit of local communities.
- Creates additional resource for forestry and woodland products markets.

Mapped on Measures Map?

W1/W1A - Areas are mapped where they link existing woodlands known to support priority species, or occur within 1 km of key urban areas or are areas which replace ancient woodland lost within the last 100 years – shown as cleared on the 1979 Ancient Woodland Inventory.

W4 - Mapped occasionally on specific sites.

W5 - Mapped occasionally on specific sites.

W6 - Not mapped as this measure applies to all woodlands.

W9 - Not mapped unless specified in SINC woodlands mapped under measure W2.

W10 - Mapped on specific sites.

Potential Funding Streams:

W1 - Countryside Stewardship option CWD1; England Woodland Creation Offer; biodiversity net gain (BNG); nutrient mitigation (NM).

W4 - Countryside Stewardship option CWD3 and CWD8; biodiversity net gain (BNG); nutrient mitigation (NM).

W5 - Countryside Stewardship options CWD7 and CWD8; biodiversity net gain (BNG).

W6 - Countryside Stewardship options CWS1, CWS3, FG9 .

W9 - Countryside Stewardship options CSP12.

W10 - Countryside Stewardship option SB1; grant support is available for restocking after felling, due to a tree health issue.

Priority Outcome – Deer, grey squirrels, and invasive plant species, like rhododendron, controlled to enable natural woodland regeneration.

Potential Measure(s):

W6 - Management and control of deer and grey squirrel populations.

This measure is aimed at controlling deer and grey squirrel populations to reduce browsing and tree damage and improve woodland structure and species diversity, and increase resilience to climate change. Deer and grey squirrel control is most effective if undertaken in a coordinated manner at a landscape scale. Actions would be appropriate beyond the mapped areas and will also be beneficial to non-woodland habitats.

W9 - Control of rhododendron, laurel and other invasive non-native woodland species.

Measures to control and eradicate rhododendron and other non-native species will improve natural regeneration of the native flora and overall biodiversity.

W10 – Raise awareness of and monitor tree pests and diseases. Felling of diseased trees.

Measures to increase awareness of and monitor incidence of tree pests and diseases and prevent disease spreading. Presence of tree pests and diseases to be reported to **TreeAlert**.

Biodiversity and wider environmental benefits:

- Helps control deer populations, reducing browsing pressure within woodlands and the wider agricultural landscape.
- Reduces grazing/browsing pressure and reduces tree damage, resulting in a greater variety of tree species that can regenerate and establish, supporting biodiversity.
- Helps maintain a balanced and diverse shrub and herb layer for wildlife.
- Maintains the financial viability of sustainable woodland management and forestry operations.

Mapped on Measures Map?

W6 - Not mapped as this measure applies to all woodland.

W9 - Not mapped unless specified in habitat survey reports for SINC woodlands mapped under potential measure W2.

W10 - Mapped on specific sites.

Potential Funding Streams:

W6 - Countryside Stewardship options WS1 and WS3.

W9 - Countryside Stewardship options CSP12, SB5 and SB6.

W10 – Countryside Stewardship option SB1; grant support is available for restocking after felling, due to a tree health issue.

Priority Species that will benefit from expansion and management of woodland and woodland edges:

Duke of Burgundy, white-letter hairstreak, brown hairstreak, red helleborine, green hound's-tongue, Devil's bolete, old man of the woods, pine martin, cheese snail, common fan foot, and species listed in the following priority species assemblages (Part 3: Species recovery): 'birds – birds of ancient coppiced woodland', 'coppice woodland', 'mature deciduous woodland', 'fungi and other species associated with deciduous woodland and wood pasture inside and outside New Forest', 'wet woodland', and 'woodland bats'.

Wood pasture, wooded commons and historic parkland

Priority Outcome – Existing lowland wood pasture, wooded common and historic parkland is restored and managed, and created. Veteran trees are safeguarded and managed. New standard parkland trees are planted in appropriate locations. Traditional orchards created and managed.

Potential Measure(s):

PP1 - Restoration and management of lowland wood pasture, wooded common and historic parkland including the planting of new trees to ensure succession.

This measure is aimed at restoring and managing lowland wood pasture, wooded common and parkland particularly on sites that support veteran trees; to provide continuity of the tree population over managed or grazed unimproved or semi-improved grassland or heathland and leaving standing or fallen deadwood habitats for invertebrates. Ensure health and lifespan of veteran trees is maximised by preventing damage (especially to roots and bark) and where appropriate by maintaining pollarding and sufficient light. Ensure newly planted trees have enough space to allow open grown crowns to develop, to provide replacement veteran trees into the future. Avoid use of fertilisers and pesticides to protect rare lichens and fungi and encourage floristic diversity. Consider reverting arable or improved grassland that lies within historic park/wood pasture boundaries back to species-rich grassland or heathland.

PP2 - Creation of wood pasture or parkland.

This measure is aimed at creating and managing new wood pasture or parkland on arable or improved/semi-improved grassland to extend, link and buffer sites with open grown trees, other areas of wood pasture or priority woodland habitats, to provide ecological connectivity and improve biodiversity.

TO1 - Traditional orchards created, restored and managed.

This measure is to create or restore a traditional orchard with healthy young fruit and nut trees, pruned to maintain their characteristic tree form, manage any existing mature and veteran trees to leave undisturbed standing, attached and fallen deadwood and retain a grass sward between the trees (once the orchard is created), with suitable sward heights and structure. The purpose being to provide a mosaic of trees and grassland which offers sources of food and shelter for wildlife, such as invertebrates and birds.

Biodiversity and wider environmental benefits:

- The planting of new standard parkland trees will ensure the succession of such trees in historic parkland, provide replacement veteran trees into the future, and provide continuity for many rare and specialist species.
- The restoration and management of existing wood pasture and the creation of new wood pasture and traditional orchards, alongside lower inputs such as fertilisers and herbicides, will provide improved habitats and enhance associated biodiversity, including many rare and specialist species.
- Provides ecological connectivity and habitat corridors with similar habitats, improving species migration and genetic exchange.
- Improves structural diversity to create nesting, foraging and breeding opportunities for associated species.
- Increases the extent of important deadwood habitats, particularly for specialist invertebrate species.
- Improves the range of ecosystem services, including air purification, soil stabilisation and water filtration benefits that these types of habitats provide.
- Increases carbon storage and sequestration through improved vegetation growth.
- Makes wood pasture and parkland, and associated species, more resilient to the effects of climate change.

- Improves landscape character and enhances cultural connection and aesthetics.
- Increases orchard fruit production and helps safeguard rare apple and other fruit varieties.

Mapped on Measures Map?

PP1 - Existing wood pasture and historic parks (outside nationally designated sites) are mapped, mostly using the Natural England Inventory of Wood Pasture and Historic Parkland.

PP2 - Areas suitable for the creation of new wood pasture or parkland are mapped.

TO1 - Not mapped.

Potential Funding Streams:

PP1 - Countryside Stewardship options CWD21, CWD22 and TE2.

PP2 - Countryside Stewardship option CWD20 and WD6; biodiversity net gain (BNG).

TO1 - Countryside Stewardship options CBE5, and CBE4; biodiversity net gain (BNG); nutrient mitigation (NM); Hampshire Forest Partnership.

Priority Species that will benefit from expansion and restoration of wood pasture and parkland:

Red-horned cardinal click beetle, zoned rosette, and species listed in the following priority species assemblages (Part 3: Species recovery): 'lichens associated with mature and veteran trees in open parkland', and 'fungi and other species associated with deciduous woodland and wood pasture inside and outside the New Forest SSSI'.

Priority Outcome – Coastal sand dunes and vegetated shingle protected and managed.

Potential Measure(s):

C1 - Creation and management of coastal sand dunes and vegetated shingle.

Ensure existing coastal sand dunes and vegetated shingle sites are well managed and look to create sand dune and coastal vegetated shingle on arable land or improved grassland in locations that were once part of, or next to active sand dune or shingle systems - to increase the area of this rare habitat. Consider use of anti-predator fencing, nest trays, education and dog control measures to protect nesting seabirds on shingle.

Biodiversity and wider environmental benefits:

- Provides valuable habitat for a wide range of species, including many rare specialist species.
- Acts as natural buffers against storm surges, coastal erosion and sea-level rise.
- Enhances coastal resilience whilst providing ecological benefits.
- Provides greater protection to communities, agricultural land and valuable habitats from coastal processes.
- Reduces the risk of flooding by absorbing and storing floodwaters during high tides and storm events.
- Sequesters carbon dioxide from the atmosphere.
- Enhances the resilience of coastal ecosystems and communities to the effects of climate change.

Mapped on Measures Map?

Existing SINC sites in poor condition are mapped. No opportunity mapping to expand this habitat has been undertaken due to lack of knowledge around the parameters that would allow shingle and dune systems to migrate or rollback, into what is mainly existing SSSIs or developed land.

Potential Funding Streams:

Countryside Stewardship options CCT8, CCT9 and FG7/FG8; biodiversity net gain (BNG).

2 Maritime soft cliffs have not been included as they are largely designated in Hampshire and maintained by natural processes. Cliff-top buffer zones are needed to allow for continued erosion and to provide supplementary habitats to support foraging for cliff-dwelling species especially priority invertebrate assemblages.

Priority Outcome – Coastal saltmarsh restored and managed.

Potential Measure(s):

C2 - Management and restoration of coastal saltmarsh.

Measures to maintain coastal saltmarsh in good condition and restore saltmarsh in unfavourable condition. Grazing or cutting are key factors. Can include lagoons and tidal creeks.

Biodiversity and wider environmental benefits:

- Improves the sustainability of saltmarsh habitats.
- Provides valuable habitat for associated species.
- Improves the habitat's role as a natural buffer against storm surges.
- Provides valuable ecosystem services such as water filtering and purification.
- Helps prevent further coastal erosion, benefitting communities and wildlife.
- Sequesters carbon dioxide from the atmosphere.
- Adapts coastal habitats to the impacts of climate change, making them more resilient to potential future changes to the coastal environment.

Mapped on Measures Map?

All SINCs for this habitat are mapped where known to be in poor condition.

Potential Funding Streams:

Countryside Stewardship option CCT3; Restoring Meadow, Marsh and Reef (ReMeMaRe) funding.



Credit: Chichester Harbour Conservancy

Priority Outcome – Inter-tidal and saline habitat, including saltmarsh/mudflat, created on coastal flood plain, intensive grassland, and arable land and/or as part of managed retreat/realignment.

Potential Measure(s):

C3 - Creation of inter-tidal and saline habitat on arable land, or on intensive grassland or by non-intervention.

Measures to create inter-tidal and saline habitats, including saltmarsh/mudflat and transitional areas (between saltmarsh and nearby habitats), on arable land or improved grassland, to create a mosaic of open habitats such as lagoons, creeks and mud flats, to provide additional feeding for birds, increase abundance of marine invertebrates and increase resilience to climate change. The beneficial use of dredged sediment to recharge eroding saltmarsh or mudflat has to be a key part of any managed realignment scheme.

C4 - Management and restoration of coastal floodplain grazing marsh for priority species and other features.

Measures to manage and restore coastal floodplain grazing marsh as a priority habitat and for use by overwintering and breeding waders/brent geese.

Biodiversity and wider environmental benefits:

- Provides a diversity of intertidal and saline habitats for wildlife including for rare, threatened and migratory species.
- Compensates for habitat losses due to coastal erosion and coastal squeeze.
- Enhances coastal resilience while providing ecological benefits.
- Reduces the risk of flooding by absorbing and storing floodwaters during high tides and storm events, for the benefit of communities and wildlife.
- Reduces erosion along shorelines and mimics tidal influences.
- Helps filter and purify water by trapping sediment, nutrients and pollutants before they enter coastal waters.
- Provides greater protection to agricultural land from coastal processes.
- Increases carbon storage and sequestration.
- Enhances the resilience of coastal ecosystems and communities to the effects of climate change.

Mapped on Measures Map?

C3 - Potential areas for saltmarsh creation are mapped using the opportunity mapping as a guide, to buffer, expand or connect to existing areas of saltmarsh and other coastal habitats. Mapping for mudflat replenishment can be essentially anywhere on the intertidal with viable vessel access and a nearby source of sediment is suitable.

C4 - Potential areas for creation of Coastal floodplain grazing marsh are mapped using the opportunity mapping as a guide, to buffer, expand or connect to existing areas of grazing marsh and other coastal habitats.

Potential Funding Streams:

C3 - Countryside Stewardship options CCT4, CCT5 and CCT7; Solent wader and brent geese mitigation (SWBGM); biodiversity net gain (BNG); nutrient mitigation (NM); Restoring Meadow, March and Reef (ReMeMaRe) funding.

C4 - Countryside Stewardship options CGS19 and CGS20; Solent wader and brent geese mitigation (SWBGM); biodiversity net gain (BNG); nutrient mitigation (NM).

Priority Outcome – Seagrass beds to be restored.

Potential Measure(s):

C5 - Restore seagrass beds.

Measures to restore seagrass beds by using established techniques with a focus on existing mapped areas and their expansion.

Biodiversity and wider environmental benefits:

- Increases habitat complexity that supports a wide range of associated species, enhancing biodiversity.
- Supports adjacent oyster reefs for the benefit of wildlife and oyster businesses.
- Acts as a buffer, helping to minimise coastal erosion processes for the benefit of communities and wildlife.
- Increases sediment stabilisation, reducing turbidity and improving water quality for the benefit of other species.
- Increases carbon storage and sequestration through vegetation growth.
- Helps increase the resilience of seagrass beds and associated species to the effects of climate change.

Mapped on Measures Map?

All known areas are mapped, although they all occur within nationally designated sites, along with 'preferred potential' areas sourced from

Seagrass Potential - data.gov.uk

Potential Funding Streams:

Restoring Meadow, March and Reef (ReMeMaRe) funding, Solent seagrass restoration project.



Priority Outcome – Native oyster reefs established.

Potential Measure(s):

C6 - Establish native oyster reefs.

Measures to establish native oyster reefs in appropriate locations.

Biodiversity and wider environmental benefits:

- Improves local water quality (a single oyster can filter up to 200 litres of water a day).
- Provides important nursery habitat for species of fish and other marine organisms.
- Acts as a natural defence against coastal erosion.
- Increases carbon storage and sequestration.

- Increases the resilience of associated species to the effects of climate change.

Mapped on Measures Map?

Not mapped – intertidal/marine.

Potential Funding Streams:

Restoring Meadow, March and Reef (ReMeMaRe) funding.

Priority Outcome – Disturbance from dogs on coastal wildfowl minimised.

Potential Measure(s):

C7 - Managing public access and dogs.

Measures to manage access by the public and control dogs to reduce impact on waders, ground nesting birds and high tide roosts on coastal habitats.

Biodiversity and wider environmental benefits:

- Reduces the detrimental impacts of disturbance on waders, ground nesting birds and high tide roosts on coastal habitats.

Mapped on Measures Map?

Measure applied to all mapped Solent wader and brent geese mitigation (SWBGM) sites (outside the nationally designated sites) and potential sites.

Potential Funding Streams:

C7 – Countryside Stewardship option AC3: Install and maintain signage; Bird Aware Solent.

Priority Species that will benefit from expansion, management and protection of coastal habitats:

Gilkicker weevil, sea heath, *Rinodina aspersa*, Wilson's pottia, and other species listed in the following priority species assemblages (Part 3: Species recovery): 'birds - shore birds – breeding, migrating and wintering', 'coastal grazing marsh and upper saltmarsh', 'saline lagoons', 'shingle and coastal grassland communities', and 'maritime soft cliffs'.



Priority Outcome – Farming is nature friendly and incorporates management/actions for farmland birds, rare arable plants and invertebrates, particularly pollinators. Arable land management incorporates buffer strips, beetle banks and headlands, minimises soil erosion and protects water quality.

Potential Measure(s):

F1 - Creation of skylark plots.

This measure will increase the abundance of skylarks by providing them with suitable access to nesting habitats in winter cereal crops throughout their breeding season.

F2 - Creation of nesting plots for lapwing and stone curlew.

This measure will provide nesting sites for lapwing and stone curlew on arable land, especially in areas where they are known to occur. The plots may also benefit other declining farmland birds, brown hare and important arable plant species.

F3 - Targeted management for specific threatened species.

This measure will increase the abundance of a target species by creating the right conditions for reintroduction, re-colonisation or range extension – aimed at turtle dove, stone-curlew, corn bunting and brown hairstreak in Hampshire.

F4 - Management of grassland for target features.

This measure is aimed at the management of grassland for target features. It can include existing grassland or grassland that's being restored or created, to support a range of habitats and features, including species such as fungi, bats, insects, birds and rare plants. This action can also be used to provide buffer areas to link up priority habitats. For feeding areas for over-wintering geese especially on coastal and floodplain grazing marsh see Measure WB1.

F5 - Provide cultivated areas and manage for rare arable plants.

This measure will increase the abundance of rare arable plant species especially in areas where they are known to occur.

F6 - Provide unharvested cereal headlands, overwinter stubble and winter bird food.

These measures will increase the abundance of declining farmland birds, small mammals, pollinator species and other insects by providing an important food source and foraging/over wintering habitat.

F7 - Protection of in-field trees on intensive grassland or arable.

This measure is aimed at protecting trees from agricultural operations and retaining as important features in the landscape, providing important habitat for invertebrates, rare mosses and lichens.

F8* - Creation and management of 4 to 6m buffer strips on intensive grassland or cultivated land.

This measure is aimed at providing new habitat which forms links or corridors between other habitats, protects existing landscape features, improves water quality if next to a watercourse (overlaps with the creation of riparian buffers), and reduces nutrient load reaching road verges of ecological importance.

F9 - Establishment of an agroforestry system where suitable conditions exist.

The establishment of an agroforestry system reduces soil erosion, provides shelter and shade for livestock, mitigates the impacts of climate change, improves water and air quality, and helps to mitigate flood risk.

F10 – Provide pollinator strips.

This measure provides areas of flowering plants to boost essential food sources for beneficial pollinators such as bumble bees, solitary bees, butterflies and hoverflies.

F11 - Management and control of deer populations.

This measure is aimed at controlling deer populations to reduce grazing and damage to crops as well as to woodlands. It is most effective if undertaken in a co-ordinated manner at landscape scale.

Biodiversity and wider environmental benefits:

- Improves the ability of farmland to support a range of species primarily associated with the farmed environment.
- Increases invertebrate biomass, including pollinators, that then support a range of ecosystems.
- Provides nesting sites and foraging resources for a wide range of species.
- Creates habitat corridors and stepping stones in the landscape to improve species migration and promote genetic variation.
- Protects watercourses and groundwater supplies from sediment, nutrients and other chemicals, benefitting people and wildlife.
- Improves water retention, reducing flood risk on local communities.
- Increases the ability of farmland to capture and sequester carbon.
- Helps farmland and associated wildlife to become more resilient to the effects of climate change.
- Through a variety of funded schemes, improves farm business viability through additional income.

Mapped on Measures Map?

F1 - Mapped on occasional specific sites.

F2 - Mapped on occasional specific sites.

F3 - Not mapped.

F4 - Sites that are mapped are identified in the Solent wader and brent geese strategy. Also includes suitable areas that link these sites that could be restored to coastal or floodplain grazing marsh.

F5 - SINCs supporting rare arable plants and adjacent land are mapped.

F6 - Mapped on the occasional proposed nutrient mitigation site.

F7 - Not mapped.

F8* - Not mapped.

F9 - Not mapped.

F10 - Mapped on the occasional proposed nutrient mitigation site.

Potential Funding Streams:

F1 - Countryside Stewardship option AHW4: Skylark plots.

F2 - Countryside Stewardship option CAB5.

F3 - Countryside Stewardship option CSP9.

F4 - Countryside Stewardship option CGS21; Solent wader and brent geese mitigation (SWBGM); nutrient mitigation (NM).

F5 - Countryside Stewardship option CAB11.

F6 - Countryside Stewardship options CAB10, CAB2, AB6, AB9 and CAB12.

F7 - Countryside Stewardship options BE1 and BE2, BSF5, TE7.

F8* - Countryside Stewardship options CSW21.

F9 - Countryside Stewardship options CAGF1, CAGF2, CAGF3 and CAGF4.

F10 - Countryside Stewardship options CAB19 and CAB16; Beelines Fund.

Priority Species that will benefit from enhancement of the farmed environment for nature:

Red-tipped cudweed, harvest mouse, and species listed in the following priority species assemblages (Part 3: Species recovery): 'birds - farmland birds', and 'rare arable plants and other species associated with arable farmland'.



Credit: UK Centre for Ecology and Hydrology

Hedgerows

Priority Outcome – Existing hedgerows better managed through trimming, pruning, laying, coppicing and gapping up to maximise their value for biodiversity.

Potential Measure(s):

HD1 - Management of hedgerows including coppicing, laying and gapping up.

This measure aims to improve the structure, longevity and biodiversity of our hedgerows, maintaining them as distinctive and historic landscape features, and increasing the availability of blossom, fruits and berries for invertebrates, overwintering birds and small mammals such as dormice. Avoid cutting all hedgerows annually to allow them to develop.

Biodiversity and wider environmental benefits:

- Enhances the value of hedgerows for wildlife including for priority species such as dormice.
- Helps maintain the structure and density of hedgerows, preventing them from becoming overgrown or excessively woody.
- Stimulates the growth of new shoots from the base of hedgerow plants, increasing their longevity and the volume of blossoms, fruits, berries and nesting sites for a range of species, including dormice, birds and invertebrates.
- Improves their effectiveness as stockproof barriers, benefitting livestock farming.
- Helps prevent shading and competition with adjacent crops.
- Helps preserve cultural heritage, landscape character, and traditional land management techniques.

Mapped on Measures Map?

Mapped on specific sites and can be applied anywhere.

Potential Funding Streams:

Countryside Stewardship options CHRW4, BN5, BN6 and BN7.



Priority Outcome – New species-rich hedgerows created using local native species to improve hedgerow connectivity and join up other species-rich habitats, like woodlands.

Potential Measure(s):

HD2 - Planting new hedgerows.

Planting new hedgerows with a variety of local native species will increase biodiversity, restore historic landscape features and sequester carbon.

Biodiversity and wider environmental benefits:

- Improves flight lines in the landscape for bat species.
- Reduces the loss of soil from agriculture and helps protect watercourses from nutrient enrichment and sedimentation.
- Improves hedgerow connectivity and provides valuable habitat corridors through the landscape, improving species migration and genetic exchange.
- Provides nesting sites and foraging resources for pollinators.
- Increases crop pollination and yields for farmers.
- Enhances the landscape character, providing scenic beauty and restoring historic landscape features.
- Sequesters carbon dioxide from the atmosphere through plant growth and biomass accumulation.

Mapped on Measures Map?

Mapped on specific sites and can be applied anywhere.

Potential Funding Streams:

Countryside Stewardship option BN11.



Credit HBIC

Priority Outcome – More hedgerow trees in new and existing hedgerows.

Potential Measure(s):

HD3 - Planting standard native hedgerow trees.

Planting new native hedgerow trees will provide shelter, food, nesting sites and song posts, as well as providing stepping stones between woodland habitats. They will sequester carbon and make a valuable contribution to the landscape. Avoid planting new hedgerow trees in areas where ground nesting bird species such as stone curlew and wetland waders need an open landscape to avoid predator species using the trees as perches.

Biodiversity and wider environmental benefits:

- Improves the ability of hedgerows to connect areas of woodland habitat.
- Sequesters carbon dioxide from the atmosphere through tree and shrub growth.
- Enhances landscape character, providing scenic beauty and cultural significance.

Mapped on Measures Map?

Mapped on specific sites and can be applied anywhere.

Potential Funding Streams:

Countryside Stewardship option TE1.

Priority Species that will benefit from expansion and management of hedgerows:

White-letter hairstreak, brown hairstreak, sandy stiltball, dormouse, western European hedgehog, harvest mouse, and other species listed in the following assemblages for priority species (Part 3: Species recovery): 'birds - farmland birds', 'birds - urban birds', 'open deciduous woodland', 'woodland bats' and 'bats requiring landscape-scale recovery and protection of roost sites'.

Priority Outcome – The nature conservation value of public spaces is enhanced.

Potential Measure(s):

U1 - Improve nature in public spaces and create wildlife corridors.

Improve nature in public and urban spaces and create new green spaces, wildlife corridors and stepping stones, through wildflower planting/seeding, hedgerow planting, tree and shrub planting, reduced and varied mowing regimes, scrub management, removal of invasive species, pond creation/ maintenance, provision of suitable nest boxes, herbicide reduction, and improved footpaths and signage to facilitate access and manage the impact of recreation on wildlife.

Biodiversity and wider environmental benefits:

- Improves the structural diversity of habitats to create nesting, foraging, and breeding opportunities for a wide range of species, enhancing biodiversity.
- Provides valuable habitat corridors through the urban landscape, improving species migration and genetic exchange, and provides ecological connectivity with habitats and species beyond the urban area.
- Increases communities' access to nature.
- Enhances individual and community health and wellbeing.
- Enhances sense of place and community cohesion.
- Improves the appearance and character of urban and sub-urban areas.
- Increases carbon storage and sequestration through vegetation growth and soil development.
- Improves community resilience to the effects of climate change by helping to cool urban areas during periods of high temperature, and reducing flood risk by intercepting and attenuating urban run-off.
- Provides educational opportunities for local schools.
- Increases nature awareness in the local population.

Mapped on Measures Map?

A variety of sites are mapped.

Potential Funding Streams:

Local authority in-house / grants; Community Infrastructure Levy (CIL) and s106 planning agreements; SANGs funding, Biodiversity Net Gain (BNG); Local communities groups; Beelines Fund.



Credit: H Jones Photography

Priority Outcome – The nature conservation value of brownfield land is enhanced.

Potential Measure(s):

U2 - Improve biodiversity on brownfield sites.

Create and maintain open mosaic habitat on previously developed land (a priority habitat) and recognise and value the contribution of brownfield habitats to nature especially for a diverse range of invertebrate species.

Biodiversity and wider environmental benefits:

- Provides important open mosaics habitats that can support a diverse range of pioneer species, and invertebrate and reptile species.
- Helps to enhance long-standing habitats, such as acid grassland lawns.
- Provides important stepping stones in the landscape for species migration, promoting genetic variation.



Mapped on Measures Map?

Several SINC's supporting the priority habitat 'Open Mosaic Habitat on Previously Developed Land' have been mapped to improve their biodiversity.

Potential Funding Streams:

Countryside Stewardship SCR2: Manage scrub and open habitat mosaics
Community Infrastructure Levy (CIL) and s106 planning agreements;
Biodiversity Net Gain (BNG).

Priority Outcome – Increased tree canopy cover in urban areas.

Potential Measure(s):

U3 - Plant more street trees.

Measure is to plant more street trees to reduce air pollution, attenuate noise, reduce surface water flooding and keep our towns and cities shaded and cool. They capture fine particulate matter, NO₂, SO₂ and carbon dioxide, and produce oxygen. They improve our physical and mental wellbeing by improving visual attractiveness and encouraging people to walk and cycle more. It is important when planting urban trees to provide sufficient space for growth and canopy expansion, manage root expansion, maximise water interception and attenuation, avoid long-term conflicts with buildings and other street infrastructure, and provide sufficient funding for long-term care.

Biodiversity and wider environmental benefits:

- Improves community resilience to the effects of climate change by helping to cool urban areas during periods of high temperature, and reducing flood risk by helping to intercept and attenuate urban run-off.
- Increases carbon storage and sequestration through vegetation growth.
- Supports urban biodiversity by providing habitat, wildlife corridors and stepping stones.
- Increases people's access to nature, improving mental health and wellbeing.
- Creates a sense of place and improves the visual character of the streetscape.

Mapped on Measures Map?

Not mapped.

Potential Funding Streams:

Local authority in-house / grants; Community Infrastructure Levy (CIL) and s106 planning agreements; Biodiversity Net Gain (BNG).



Credit: GreenBlue Urban

Priority Outcome – Transport corridors, including new and existing road verges and rights of way are enhanced for biodiversity.

Potential Measure(s):

U4 - Improve biodiversity on Road verges of ecological importance (RVEIs) and other road verges.

Measures to improve biodiversity on road verges and roundabouts with reduced and planned cuts, especially for those identified as Road Verges of Ecological Importance (RVEIs), allowing a longer unmown period of at least 3 months over the summer for flowering, whilst having regard to more frequent safety cuts required for visibility reasons. Cut and collect should be the ultimate objective. See **Grass cutting and weed control | Transport and roads | Hampshire County Council**. Join the Parish Pollinator Network for advice and support on improving biodiversity within your parish road network. Consider low input buffer strips on field side of RVEIs to reduce nutrient load reaching the verges - see F8.

U5 - Improve biodiversity along new & existing travel routes.

Improve the connectivity of nature corridors by targeting new and existing travel routes (National Trails, rail, road, cycleways, green lanes and footpaths) for high quality green and blue infrastructure, including active management, and use of Sustainable Drainage Systems (SuDS). Use native seed mixes and new planting that reflects the character of the area that delivers for biodiversity and reduces run-off entering our natural watercourses.

Biodiversity and wider environmental benefits:

- Increases communities' access to nature.
- Collectively, provides significant areas of habitat for biodiversity.
- Improves habitat structural diversity to create additional nesting, foraging, and breeding opportunities for many species including small mammals, reptiles and amphibians.
- Provides linear wildlife corridors across the landscape allowing species to migrate, promoting genetic variation.
- Enhances species populations, particularly pollinator species.
- Provides ecotones along habitat corridors, where verge vegetation is influenced by varying adjacent habitat types, increasing biodiversity.
- Increases total area of species-rich habitat, particularly grassland, scrub and woodland.
- Improves carbon storage and sequestration through vegetation growth and soil development.
- Provides bank/cutting stabilisation, increasing public safety and reducing the need for land management and engineering intervention.
- Increases the resilience of a variety of habitats and associated species to the effects of climate change.
- Improves local air quality and helps to buffer adjacent sensitive sites from the air pollution, noise and visual disturbance generated by traffic.
- Provides opportunities to absorb, filter and attenuate surface water runoff, particularly in periods of storm surge.

Mapped on Measures Map?

U4 - Several hundred road verges are mapped including all road verges of ecological importance (RVEIs) and other verges in urban situations where there is planned reduced/timed mowing to improve their diversity.
U5 – Not mapped.

Potential Funding Streams:

U4 - Countryside Stewardship options CS21 (field side); Highways Authority and Highways England.
U5 - Highways Authority and Highways England; Biodiversity Net Gain (BNG); Community Infrastructure Levy (CIL) and s106 planning agreements Network Rail.

Priority Outcome – Increase biodiversity within residential and community gardens.

Potential Measure(s):

U6 – Improve nature within residential and community gardens.

Measures to promote the contribution that gardens can make towards increasing biodiversity and supporting species that are becoming more dependent on urban spaces, potentially through parish councils and local 'green groups'. To encourage residents to garden in a wildlife friendly way by providing refuge habitats and feeding resources - such as creating small ponds, log piles and compost heaps, providing nest boxes, leaving longer areas of grass, planting nectar rich plants and native trees and shrubs, and by leaving gaps at the bottom of fences to create "wildlife corridors" that allow creatures to move between gardens. Avoid use of pesticides and artificial grass.

Biodiversity and wider environmental benefits:

- Provides benefits for a wide range of species, including pollinators.
- Helps local communities become more resilient to the effects of climate change, including cooling urban areas in periods of high temperatures.
- Increases access to nature, enhancing health and wellbeing.
- Improves soils and carbon storage.
- Provides linear wildlife corridors and stepping stones across the urban landscape.
- Reduces flood risk by helping to intercept and attenuate urban run-off.

Mapped on Measures Map?

Not mapped.

Potential Funding Streams

For community gardens - Local councils, Housing associations, Community Programme | Grow Wild | Kew , Community Hub | The Wildlife Trusts.

Priority Outcome – Impacts from recreational disturbance on the Thames Basin Heaths SPA, Wealden Heaths Phase II SPA, New Forest SPA and coastal SPAs are mitigated through the creation of alternative natural greenspace (SANGs) and habitats.

Potential Measure(s):

U1 - Improve nature in public spaces and create wildlife corridors.

Improve nature in public and urban spaces to create new green spaces including SANGs, wildlife corridors and stepping stones, through wildflower planting/ seeding, hedgerow planting, tree and shrub planting, reduced mowing, scrub management, removal of invasive species, pond creation/ maintenance, provision of suitable nest boxes, herbicide reduction. and improved footpaths and signage to facilitate access and manage impact of recreation on wildlife.

Biodiversity and wider environmental benefits:

- Reduces recreational disturbance on sensitive sites and species by providing alternative greenspace in the form of SANGs, country parks, etc.
- Helps protect important bird species for which the SPAs are designated.
- Creates additional habitats for protected and other species, enhancing biodiversity.
- Increases communities’ access to nature, enhancing health and wellbeing.
- Improves carbon storage and sequestration through vegetation growth and soil development.

Mapped on Measures Map?

A variety of sites are mapped.

Potential Funding Streams:

Local authority in-house / grants; Community Infrastructure Levy (CIL) and s106 planning agreements; Biodiversity Net Gain (BNG); Local communities groups; Beelines Fund.

Priority species that will benefit from the enhancement of greenspace, brownfield land and transport corridors:

The biodiversity enhancement of greenspace and transport corridors will benefit a wide range of priority species depending on the habitats and/or species populations present. This includes field garlic, tower mustard, field cow wheat and striped lychnis found on RVEIs, plus western European hedgehog and species listed in the following priority species assemblages (Part3: Species recovery): ‘birds - urban birds’, ‘birds - urban gulls’, and ‘ponds for amphibians’.

Sites of Importance for Nature Conservation (SINCs)

Priority Outcome – The condition of SINC habitats is improved.

Potential Measure(s):

Range of measures listed in this table depending on associated habitat types.

Biodiversity and wider environmental benefits:

- Provides benefits for all habitats and species populations covered by SINC designation.
- Provides access to nature and associated health and wellbeing benefits for those SINCs that are publicly accessible.
- Improves the range of ecosystem services that these areas provide, including air purification, soil stabilisation, water filtration, and flood attenuation benefits, that SINCs provide for communities and wildlife.

Mapped on Measures Map?

This priority outcome applies to all SINCs considered to be in poor or uncertain condition.

Potential Funding Streams:

Range of funding streams listed in this section depending on associated habitat types.

Priority Species that will benefit from the enhancement of SINCs:

The enhancement of the condition of SINCs across the LNRS area will benefit a wide range of priority species depending on the habitat types and/or species populations the SINCs were selected for.

Improving knowledge of priority species and priority habitats

Priority Outcome – Priority habitats and priority species populations are enhanced and sustained with the most up to date supporting evidence.

Potential Measure(s):

S1 - Species survey, monitoring and evaluation.

To increase knowledge and understanding of priority species in order to assess feasibility of managing or restoring the habitat or the species population.

S2 - Managing land specifically for priority species.

Bespoke targeted management aimed at any species on the LNRS priority species list to protect, manage, restore, expand, and reconnect sites to enable that species to recover and flourish.

S3 – New habitat survey required to assess condition, guide management options and monitor progress.

Ensuring that habitat management decisions and monitoring programmes are based on the most up to date habitat survey data.

Biodiversity and wider environmental benefits:

- Changes in priority species' populations are tracked.
- The effects of different forms of habitat management on priority species are better understood.
- Greater genetic exchange is enabled through improved ability for species to move through the landscape.
- The condition of priority habitats, and the efficacy of different management regimes, is better understood.

Mapped on Measures Map?

S1 – Mapped for some sites and would apply to all sites known to support priority species listed in Part 3 as 'data deficient' (class E).

S2 - Mapped on some sites known to support priority species (W3 is applied to woodlands with priority species).

S3 – Applied to all SINCs on the measures map where data is over 20 years old (pre-2005). Note, some SINCs may have only been partially surveyed within last 20 years but will still have S3 applied.

Potential Funding Streams:

S1: Built into various Countryside Stewardship options and England Woodland Creation Offer (EWCO) schemes.

S2: Species Recovery programmes (SRP); Species conservation strategies (SCS).

S3: Habitat surveys can be funded by various Stewardship/WGS/EWCO assessment grants and by the Local Planning Authorities, as part of the HBIC habitat survey programme.

* These priorities focus on water quality within watercourses and SPZs but do so solely through grassland management. If woodland were to be included as a measure to deliver improved water quality, this could be supported through EWCO, with landowners receiving the Additional Contribution for water quality and riparian buffers. There would also be potential for the Woodland Carbon Code to deliver funding and the future Woodland Water Code - **Woodland Water Code Information Sheet - Forest Research**

Beelines Fund (within SDNPA) - **South Downs Trust**

Big Chalk Nature Recovery Fund **Big Chalk | Big Chalk Nature Recovery Fund - launching late August...**

Biodiversity net gain (BNG) - **Biodiversity net gain - GOV.UK (www.gov.uk)**

Chalk Partnership Fund - **More good news from the Environment Agency – Chalk-Streams**

Community Infrastructure Levy and Section 106 Agreements (CIL / s106) - **Community Infrastructure Levy - GOV.UK (www.gov.uk). What are Section 106 (s106) agreements? - Planning Portal**

Countryside Stewardship (CS) potential options listed - **Countryside Stewardship Higher Tier actions - GOV.UK**

England Woodland Creation Offer (EWCO) - **England Woodland Creation Offer - GOV.UK (www.gov.uk)**

Great Crested Newt (GCN) District Licencing - NatureSpace and Newt Conservation Partnership - **Newt Conservation Partnership (freshwaterhabitats.org.uk)**

Hampshire Forest Partnership (HFP) - **Get involved | Hampshire County Council (hants.gov.uk)**

Nutrient Mitigation (NM) - **Nutrient Mitigation for New Housing Development - Partnership for South Hampshire (push.gov.uk)**

Sustainable Farming Incentive (SFI) - **Sustainable Farming Incentive: guidance for applicants and agreement holders - GOV.UK (www.gov.uk)**

Species Recovery programmes (SRP) - **What you need to know about the Species Recovery Programme Capital Grant scheme – Natural England**

Solent Wader and Brent Geese Mitigation (SWBGM) - **Bird Aware Solent - Partnership for South Hampshire (push.gov.uk)**

Thames Basin Heaths SANG funding available via Natural England - **Thames Basin Heaths Special Protection Area Delivery Framework**

Restoring Meadow, Marsh and Reef (ReMeMaRe) - **Restoring Meadow, Marsh and Reef (ReMeMaRe) | Estuarine & Coastal Sciences Association (ecsa.international)**

Water Environment Improvement Fund (WEIF) - **Water Environment Improvement Fund projects - GOV.UK**

Water Industry National Environment Programme (WINEP) - **Water industry national environment programme (WINEP) methodology - GOV.UK**

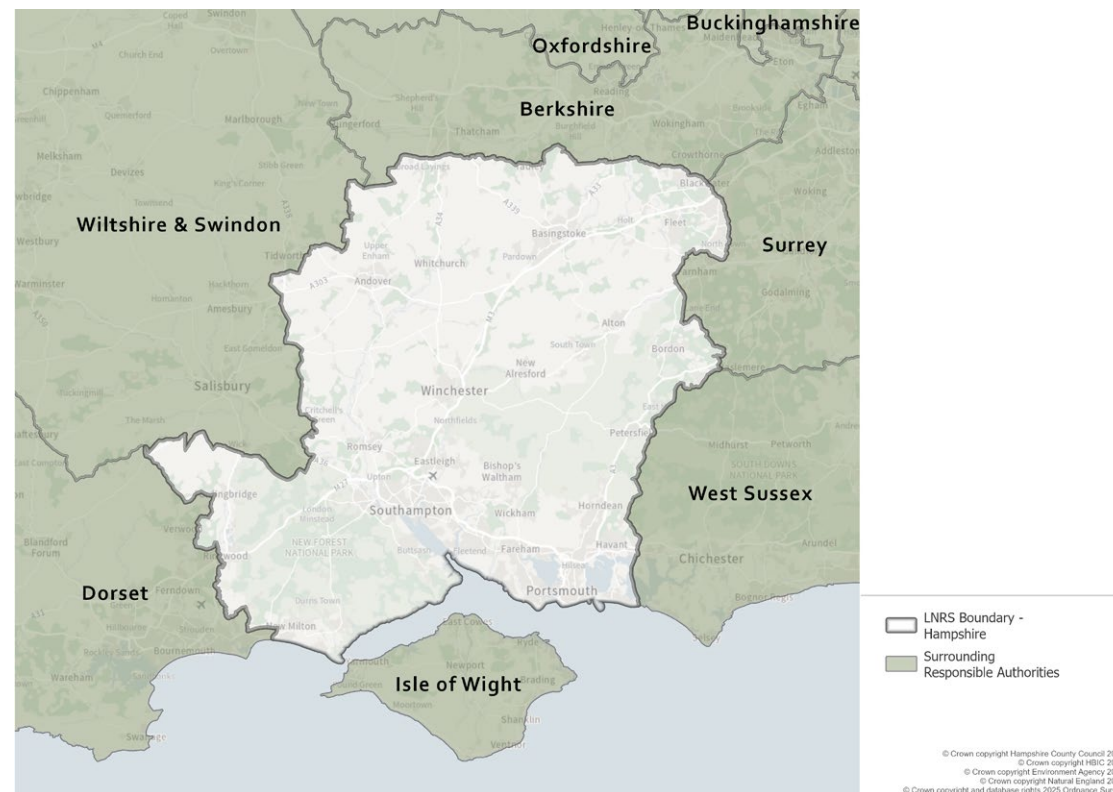
Water Restoration Fund - **About the Water Restoration Fund - GOV.UK**

Woodland Carbon Code - **Home | Woodland Carbon Code**

Woodland Tree Health grant (WTH) - **Applicant's guide: Woodland Tree Health grants 2024 - GOV.UK2.**

2. Maps

The Defra defined LNRS for Hampshire area covers the boundary of the county of Hampshire. This includes the cities of Southampton and Portsmouth, and incorporates those parts of the New Forest National Park and South Downs National Park within its border. As a coastal county, the LNRS boundary extends to the intertidal zone as far as the mean low water mark³. The total area that the LNRS covers is 385,435ha.



3 Defra statutory guidance requires that LNRS follow administrative boundaries into the inter tidal zone only to mean low water. The Marine Management Organisation (MMO) will explore how spatial planning for marine nature recovery might develop in the future.

Three principal types of maps are presented below. These are:

- Areas of particular importance for biodiversity (APIB) map.
- Measures map.
- Areas that could become important for biodiversity (ACB) map.

(LNRS maps are also available for viewing in greater detail on the LNRS for Hampshire website⁴)

4 LNRS for Hampshire Website - <https://www.hants.gov.uk/landplanningandenvironment/nature-recovery-hampshire/hampshire-strategy>

Areas of particular importance for biodiversity (APIB)

LNRS statutory guidance⁵ sets out specifically what should and should not be included in the APIB map. It should contain:

- All national and international conservation sites.
- All Local Nature Reserves.
- Other areas of particular importance for biodiversity, as defined in paragraph 22 of the guidance as:
 - All existing local wildlife sites.
 - Areas of irreplaceable habitat.
 - Other areas identified by the Secretary of State as being of particular importance.

Areas of irreplaceable habitat are defined as those included in the biodiversity net gain (BNG) irreplaceable habitats list⁶. Those on this list that are relevant to Hampshire include:

- Ancient woodland.
- Ancient and veteran trees⁷.
- Coastal sand dunes.
- Spartina saltmarsh swards.
- Lowland fens.

The Secretary of State has not identified any other areas of being of particular importance, and therefore there is no requirement for other areas to be included on the map.

The guidance is clear that responsible authorities should not map any other areas that are not mentioned in paragraph 22 of the guidance as being of particular importance for biodiversity. It notes that this is not to suggest that other areas are not of importance for biodiversity. It is to help establish a nationally consistent baseline of areas whose particular importance has already been recognised and are protected. It states that this will help LNRSs align well with local planning policy and avoid duplicating with the identification of local wildlife sites.

If a responsible authority believes that additional areas require protection due to their importance, they should discuss making them local wildlife sites with the relevant local planning authority. For example, in Hampshire it is estimated that some 20% of priority habitat has yet to be assessed for local wildlife site designation.

Areas of particular importance for biodiversity (APIB) cover a total area of 90,099ha, which is 23.4% of Hampshire's land area.

⁵ Local nature recovery strategy statutory guidance What a local nature recovery strategy should contain (March 2023) -

https://assets.publishing.service.gov.uk/media/6421a4bdf97a8001379ecf1/Local_nature_recovery_strategy_statutory_guidance.pdf

⁶ BNG irreplaceable habitats list - <https://www.gov.uk/guidance/irreplaceable-habitats>

⁷ Ancient and veteran trees are not currently present on the APIB map due to uncertainties around the accuracy of the data, and licensing issues.

The APIB map is provide in Map 2.1, below. As all features on the APIB map are shown collectively as shades of green, it is supplemented by four further maps (Maps 2.2 – 2.5) that help to differentiate between the features that combine to form the APIB map, as follows:

- APIB map with main features differentiated (Map 2.2).
(Note: The nationally designated sites mask areas of irreplaceable habitat whilst Local Wildlife Sites are shown as boundaries only so as not to mask areas of irreplaceable habitat.)
- APIB map showing only internationally and nationally designated site sub-components (Map 2.3).
- APIB map showing only irreplaceable habitat sub-components (Map 2.4).
- APIB map showing local sites sub-component (Map 2.5).

The APIB map has been produced in conjunction with the Hampshire Biodiversity Information Centre (HBIC) and on behalf of the LNRS Steering Group and Supporting Authorities Working Group.

The APIB map and supplementary maps are also available for viewing on the LNRS for Hampshire website⁸.

⁸ LNRS for Hampshire Website - <https://www.hants.gov.uk/landplanningandenvironment/nature-recovery-hampshire/hampshire-strategy>

Map 2.1: Areas of particular importance for biodiversity (APIB) map



Areas of Particular Importance for Biodiversity (APIB)

© Crown copyright Hampshire County Council 2025
© Crown copyright HBIC 2025
© Crown copyright Environment Agency 2025
© Crown copyright Natural England 2025
© Crown copyright and database rights 2025 Ordnance Survey

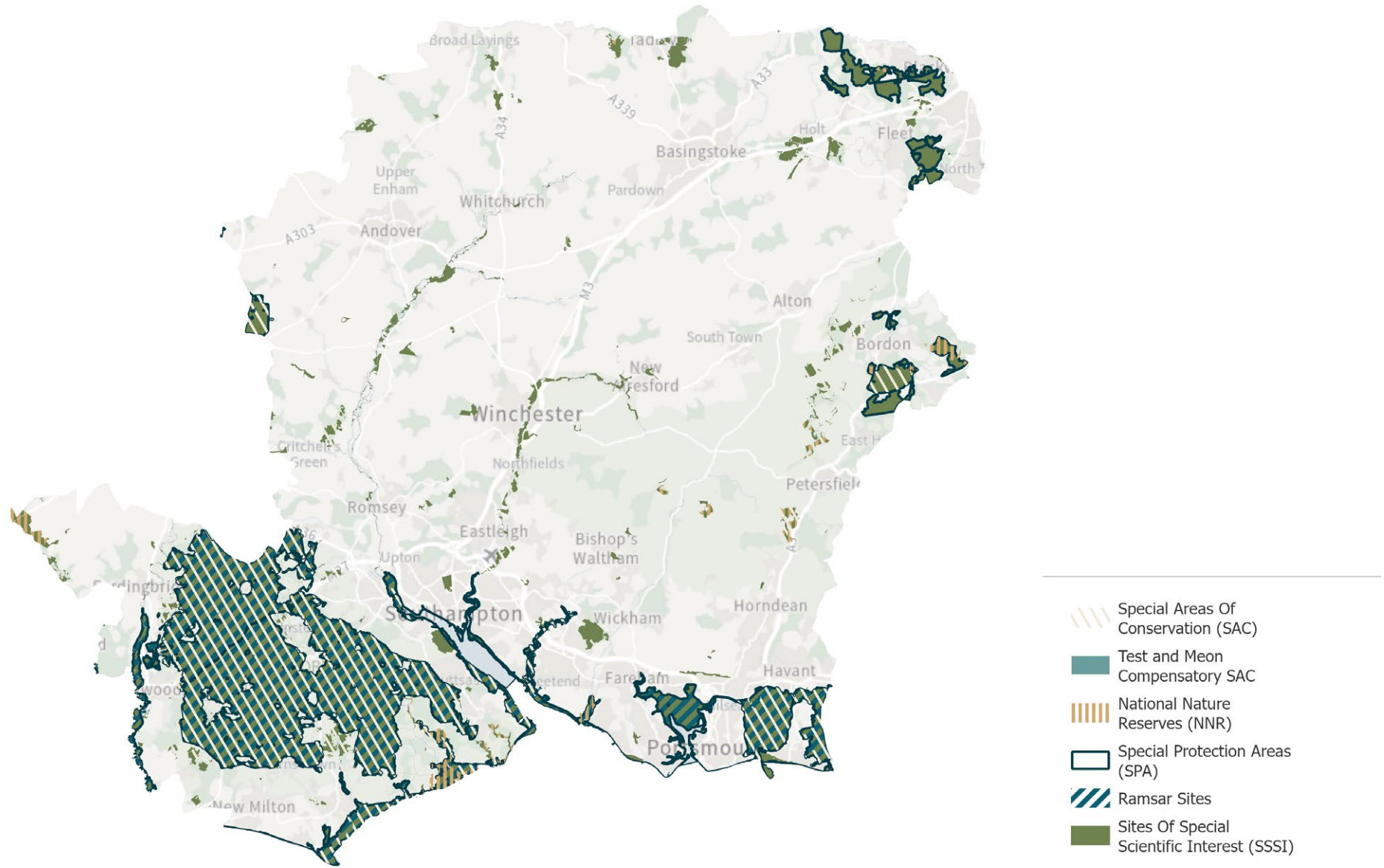
Map 2.2: APIB map (with main features differentiated)



-  Irreplaceable Habitat
-  Local Wildlife Sites (SINCs)
-  Local Nature Reserves
-  National Designated Sites

© Crown copyright Hampshire County Council 2025
© Crown copyright HBIC 2025
© Crown copyright Environment Agency 2025
© Crown copyright Natural England 2025
© Crown copyright and database rights 2025 Ordnance Survey

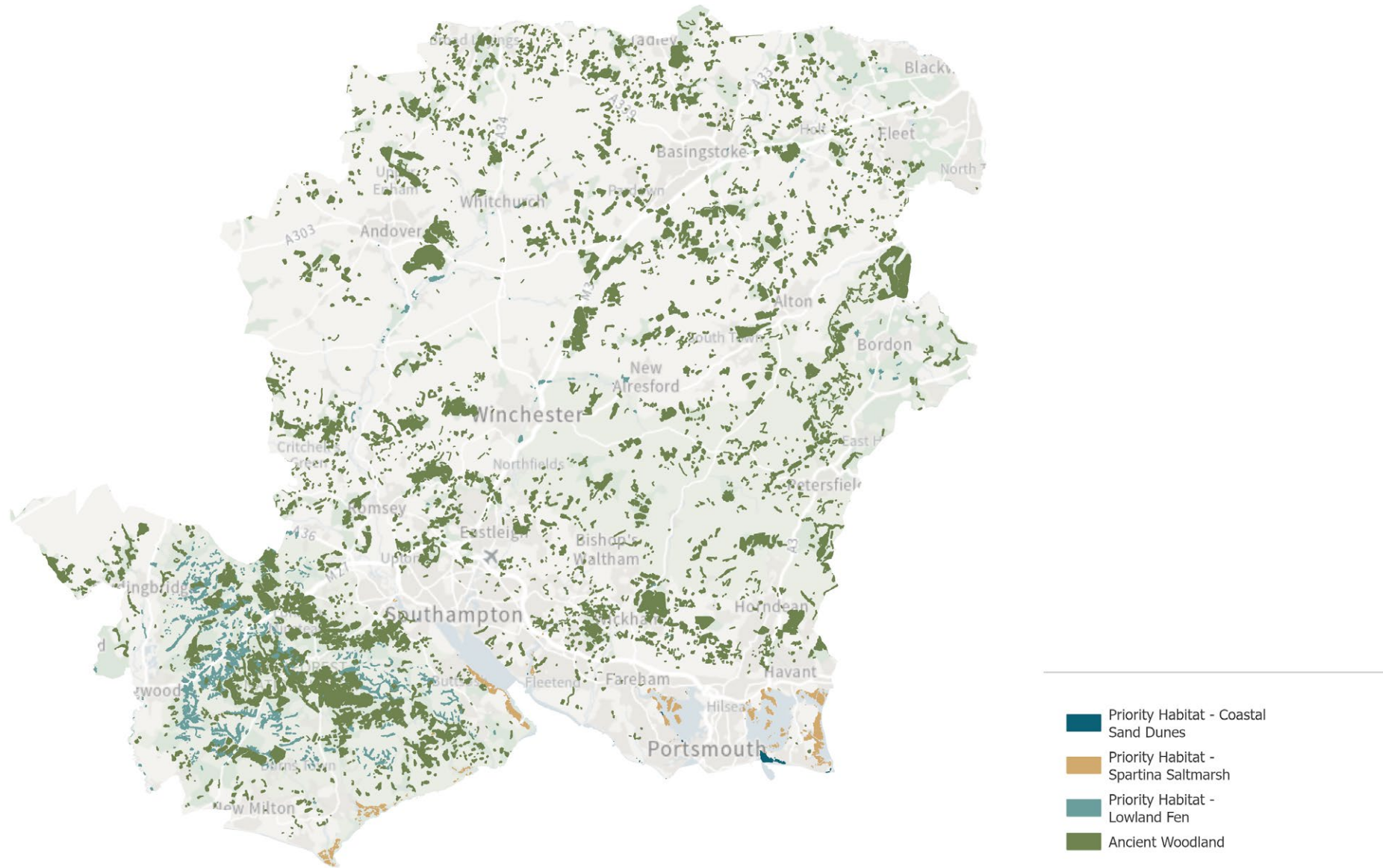
Map 2.3: APIB map (internationally and nationally designated sites)



- Special Areas Of Conservation (SAC)
- Test and Meon Compensatory SAC
- National Nature Reserves (NNR)
- Special Protection Areas (SPA)
- Ramsar Sites
- Sites Of Special Scientific Interest (SSSI)

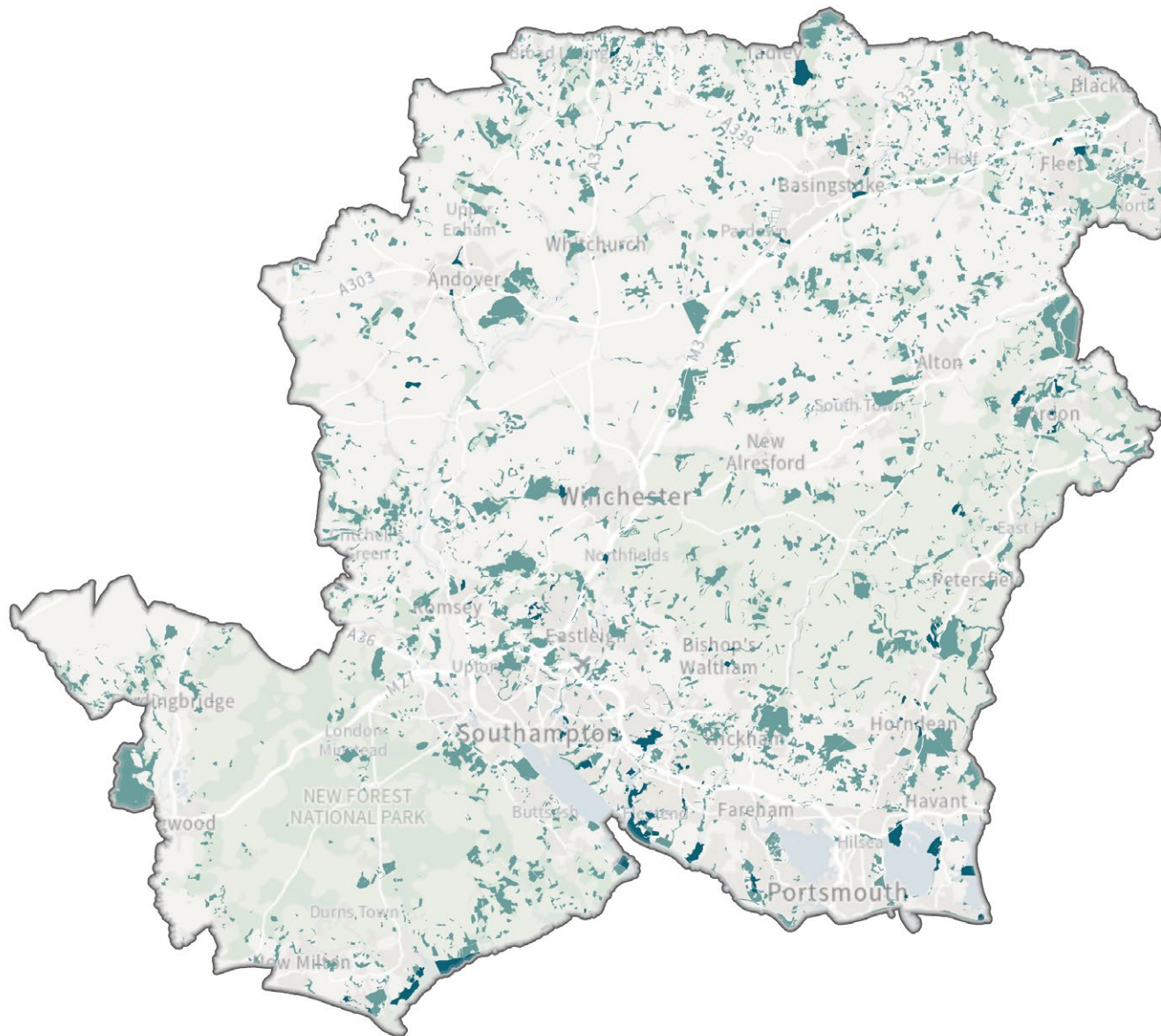
© Crown copyright Hampshire County Council 2025
 © Crown copyright HBIC 2025
 © Crown copyright Environment Agency 2025
 © Crown copyright Natural England 2025
 © Crown copyright and database rights 2025 Ordnance Survey

Map 2.4: APIB map (irreplaceable habitat)



© Crown copyright Hampshire County Council 2025
© Crown copyright HBIC 2025
© Crown copyright Environment Agency 2025
© Crown copyright Natural England 2025
© Crown copyright and database rights 2025 Ordnance Survey

Map 2.5: APIB map (local sites)



- Local Nature Reserves
- Local Wildlife Sites (SINCs)

© Crown copyright Hampshire County Council 2025
© Crown copyright HBIC 2025
© Crown copyright Environment Agency 2025
© Crown copyright Natural England 2025
© Crown copyright and database rights 2025 Ordnance Survey

Measures map

The measures map (Map 2.6) plots the locations where potential measures from the statement of biodiversity priorities could be carried out in a way that contributes to the Strategy's priorities. This allows the LNRS to consider areas of potential importance for biodiversity and nature-based solutions in an integrated way. Areas included on the measures map are considered strategically significant areas and eligible for biodiversity net gain (BNG) uplift. Areas on the measures map cover 86,293ha, which is 22.4% of Hampshire's land area.

The measures map builds on the distribution of existing habitats and areas of particular importance for biodiversity. This means that areas that could become of particular importance for biodiversity (ACB) can be targeted to join up or expand and buffer those existing areas of importance or provide valuable stepping stones. This helps to establish larger, more resilient networks of high-quality habitat across the landscape. Mapped areas range in size, from individual sites to narrow linear features such as proposed riparian buffers, and to much larger landscape-scale areas informed by the priority habitat opportunity mapping.

The methodology used to construct the Priority Habitat Opportunity mapping is provided in Appendix 6. It is guided by the Natural England Habitat Network model which maps habitat creation opportunities for the following eleven priority habitats:

- Ancient woodland.
- Wood pasture and parkland.
- Lowland calcareous grassland.
- Lowland meadow.

- Lowland heath.
- Lowland acid grassland.
- Lowland fen.
- Reed-bed.
- Floodplain and coastal grazing marsh.
- Coastal saltmarsh.
- Purple moor grass and rush pasture.

These priority habitat opportunities are shown in six supplementary maps (Maps A6.1 – A6.6) in Appendix 6.

The measures map includes the following components, some of which will overlap. Each one has one or more potential measures attached to it:

- Habitat Opportunity Areas – areas buffering SSSI and SINCs and supported by the priority habitat opportunity mapping. Also includes sites proposed by the supporting authorities for inclusion (these are described in more detail in Appendix 7):
 - Biodiversity net gain.
 - Nutrient mitigation schemes.
 - Nature recovery through local plans, neighbourhood plans, and local biodiversity action plans.
 - Mineral sites where nature recovery is planned as part of restoration proposals.
 - Sustainable alternative natural greenspaces, local green spaces, and other land LPAs own or manage for nature recovery.
 - Woodlands owned by Forestry England where nature recovery is planned (SINCs and undesignated woodlands).

- Riparian buffers which cover up to 10m either side of all rivers and streams.
- All in-channel river habitat excluding stretches designated as SSSI.
- SINCs in poor condition due to negative or unknown management. These have been removed from the ACB map as they are already mapped on the APIB map.
- SINC woodlands supporting priority woodland species.
- Proposed woodland creation sites produced from a 'lost ancient woodland layer' (shown as cleared post 1920 in the original ancient woodland inventory produced in 1979) and by targeting areas of farmland that connect ancient woodlands that support LNRS priority species.
- Planted ancient woodland (PAWs) that directly abuts ancient semi-natural woodland.
- Historic Parkland and Wood Pasture sites.
- Solent wader and brent geese sites (all sites).
- Seagrass beds and potential expansion zones.
- Groundwater Source Protection Zones (1) WFD.
- Road verges of ecological importance (RVEIs) and other verges undergoing measures which improve their biodiversity.

In identifying potential measures and their locations, the development of the LNRS has considered which would have the greatest impact on achieving the priorities, and which would achieve greater connectivity of similar biodiverse habitats across the landscape.

It should be noted that some measures cover a much wider area, or Hampshire as a whole, and are not included in the measures map. These include measures such as deer control and nature friendly farm management practices, and are set

out in the shortlist of priority outcomes in Section 1 of this document.

Supplementary maps that show the following sub-components of the measures map (these are also available for viewing on the LNRS for Hampshire website⁹) are set out below:

- 1.** Habitat Opportunity Areas (Map 2.7).
- 2.** Woodland creation or restoration areas (Map 2.8). This map shows:
 - Ancient woodlands targeted for priority species management.
 - PAWs woodland.
 - Woodland creation areas and replacing 'lost' ancient woodland.
 - Woodland SINCs targeted for priority species management.
 - Parkland and wood pasture sites.
- 3.** Rivers and riparian buffers, fish migration barriers and Groundwater Source Protection Zones (Map 2.9). This map shows:
 - Riparian buffers.
 - In-channel rivers and streams.
 - Barriers to fish migration.
 - Groundwater Source Protection Zones.
- 4.** SINCs and RVEIs, plus other road verges with measures (Map 2.10). This map shows:

⁹ LNRS for Hampshire Website - <https://www.hants.gov.uk/landplanningandenvironment/nature-recovery-hampshire/hampshire-strategy>

- SINC in poor condition due to negative or nil management.
- SINC condition uncertain (not been surveyed for 20+ years).
- RVEIs and other road verges (some are also SINC).

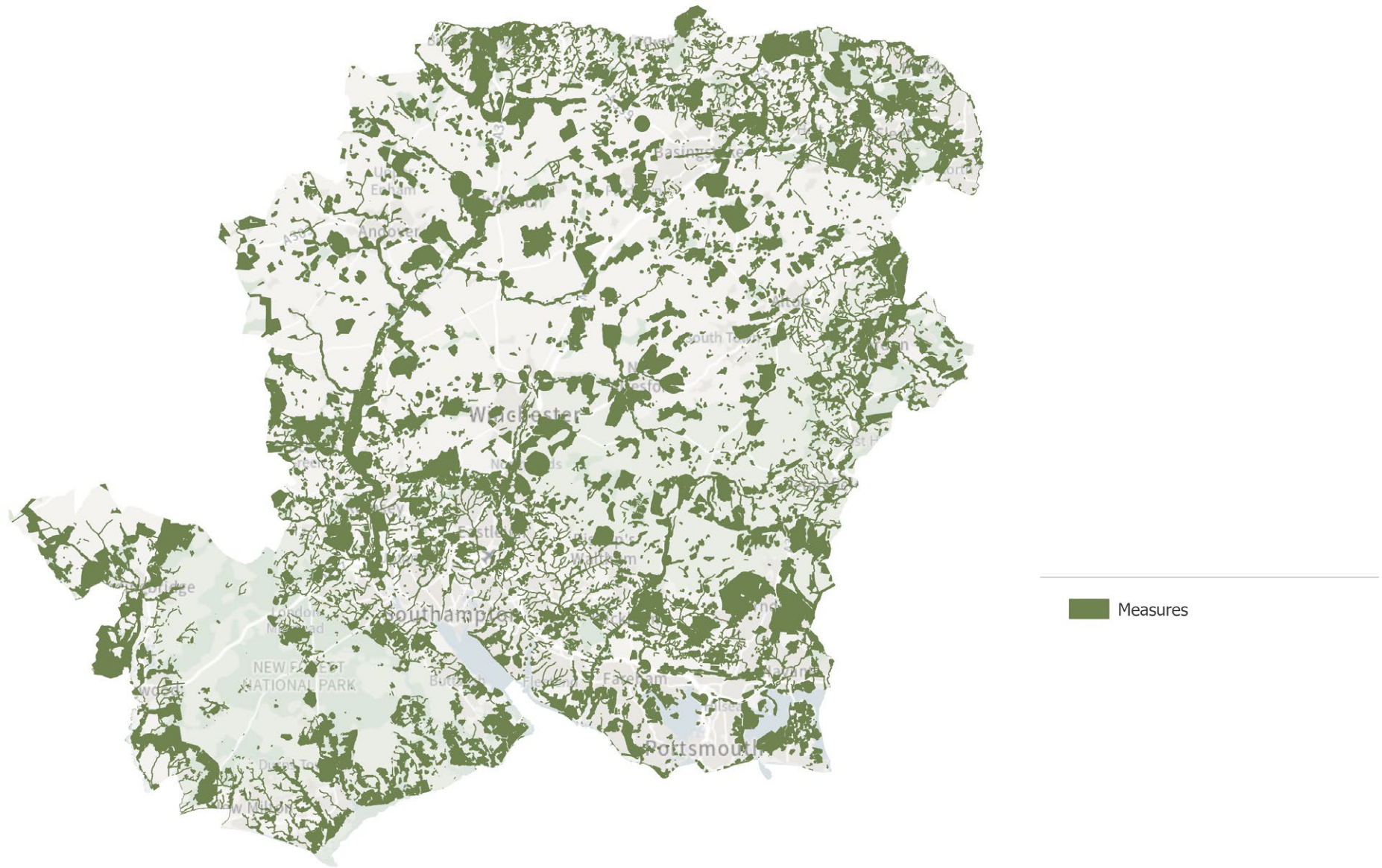
5. Solent wader and brent geese sites and seagrass beds and potential expansion zones (Map 2.11). This map shows:

- SWBG - all sites mapped in the SWBG Strategy.
- Seagrass beds and potential expansion zones.



Credit: Mang Thang

Map 2.6: Measures map



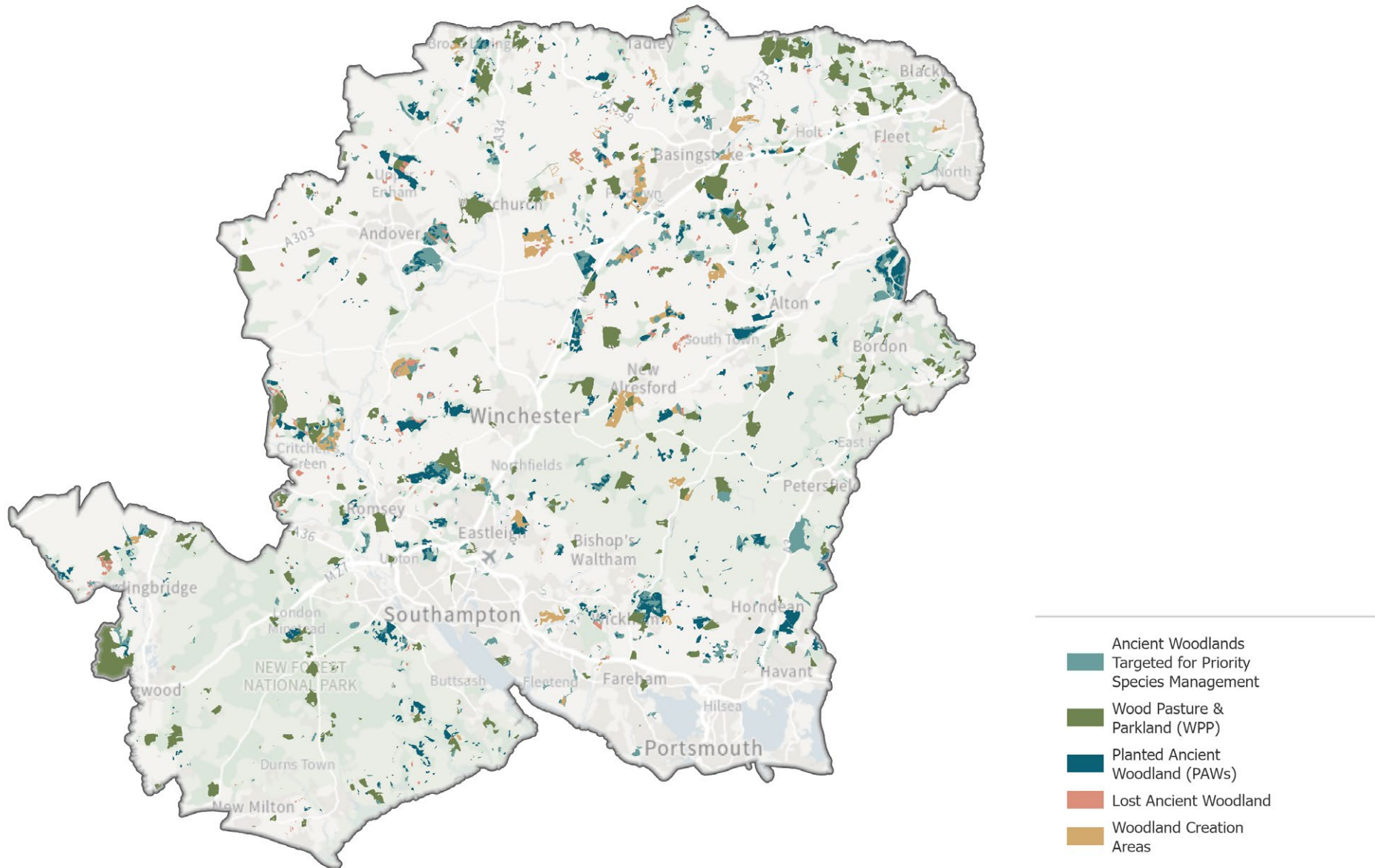
© Crown copyright Hampshire County Council 2025
© Crown copyright HBIC 2025
© Crown copyright Environment Agency 2025
© Crown copyright Natural England 2025
© Crown copyright and database rights 2025 Ordnance Survey

Map 2.7: Habitat Opportunity Areas (sub-component of Map 2.6)



© Crown copyright Hampshire County Council 2025
© Crown copyright HBIC 2025
© Crown copyright Environment Agency 2025
© Crown copyright Natural England 2025
© Crown copyright and database rights 2025 Ordnance Survey

Map 2.8: Woodland creation or restoration areas (sub-component of Map 2.6)



- Ancient Woodlands Targeted for Priority Species Management
- Wood Pasture & Parkland (WPP)
- Planted Ancient Woodland (PAWs)
- Lost Ancient Woodland
- Woodland Creation Areas

© Crown copyright Hampshire County Council 2025
 © Crown copyright HBIC 2025
 © Crown copyright Environment Agency 2025
 © Crown copyright Natural England 2025
 © Crown copyright and database rights 2025 Ordnance Survey

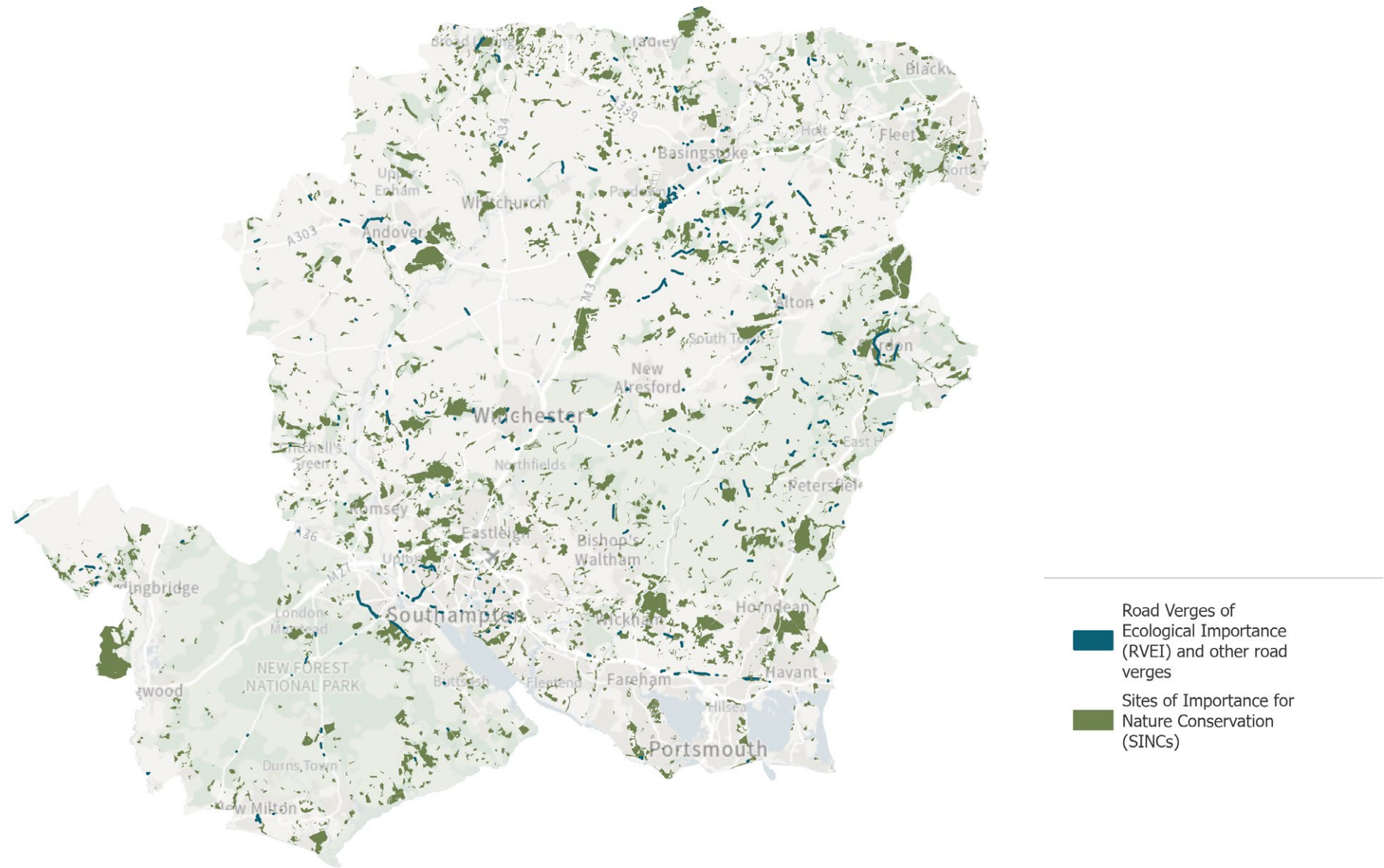
Map 2.9: Rivers and riparian buffers, fish migration barriers and Groundwater Source Protection Zones (sub-component of Map 2.6)



- Fish Migration Barriers
- Groundwater Source Protection Zones
- In-Channel Rivers & Streams
- Riparian Buffers (up to 10m wide)

© Crown copyright Hampshire County Council 2025
 © Crown copyright HBIC 2025
 © Crown copyright Environment Agency 2025
 © Crown copyright Natural England 2025
 © Crown copyright and database rights 2025 Ordnance Survey

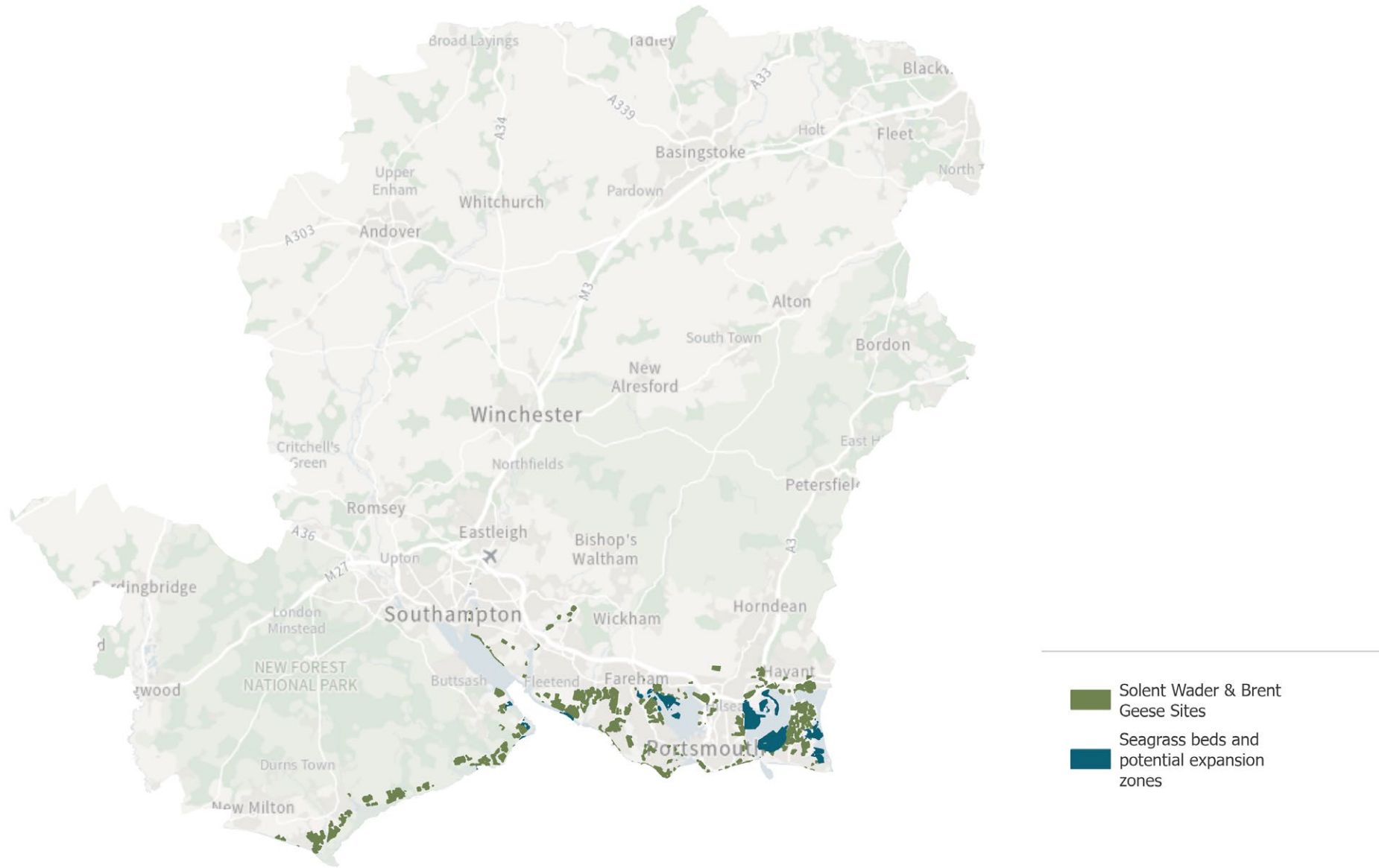
Map 2.10: SINCs and RVEIs, plus other road verges with measures (sub-component of Map 2.6)



- Road Verges of Ecological Importance (RVEI) and other road verges
- Sites of Importance for Nature Conservation (SINCs)

© Crown copyright Hampshire County Council 2025
 © Crown copyright HBIC 2025
 © Crown copyright Environment Agency 2025
 © Crown copyright Natural England 2025
 © Crown copyright and database rights 2025 Ordnance Survey

Map 2.11: Solent wader and brent geese sites, and seagrass beds and potential expansion zones (sub-component of Map 2.6)



- Solent Wader & Brent Geese Sites
- Seagrass beds and potential expansion zones

© Crown copyright Hampshire County Council 2025
 © Crown copyright HBIC 2025
 © Crown copyright Environment Agency 2025
 © Crown copyright Natural England 2025
 © Crown copyright and database rights 2025 Ordnance Survey

Areas that could become of particular importance for biodiversity (ACB) map

Defra LNRS guidance states that “areas that could become of importance [for biodiversity] must not overlap with areas that are already of particular importance for biodiversity” (APIBs). Therefore, all APIBs have been removed from the Measures Map to create the ACB map. This does not mean that APIBs do not require measures to restore or improve their condition, which is why many SINC’s appear on the Measures Map.

The ACB map shows where we can connect and expand existing habitats in order to deliver the Lawton principles¹⁰ of “bigger”, “better” and “more connected” spaces for nature to create resilient and coherent ecological networks. Areas on the ACB map cover 51,477ha, which is 13.4% of Hampshire’s land area.

Sites and areas identified on either the ACB map or measures map will have a BNG ‘strategic significance multiplier’ applied to them. This will incentivise targeted habitat creation and enhancement in these areas. (see Appendix 3).

Whilst the measures and ACB maps show where action for nature recovery will have the most benefit for nature and the wider environment, any efforts to create or enhance space for nature outside of these areas should be encouraged, wherever it is.

It is recommended that advice and guidance is sought from an ecologist or

land management adviser when planning to create or enhance habitat. Where schemes potentially impact a Scheduled Monument or non-designated cultural heritage feature, the advice and opinion of Historic England and the local authority historic environment officer, respectively, must be sought. Habitat features such as ancient hedgerows and boundary banks, ancient woodlands, and water meadow systems, and landscape features such as parks and gardens of historic design (including those that are Registered), and protected battlefield sites, have significant cultural and historic value. Heathlands and woodlands often contain burial features and earthworks that have not survived the arable landscape. Historic landscape character can inform woodland and hedgerow creation. Nature recovery schemes should seek to avoid ‘needless or thoughtless damage’ to the historic environment and archaeological sites.

This will determine the most appropriate and beneficial action for nature and the surrounding environment. It is also recommended to seek relevant advice where consent is required. Where there may be multiple habitat opportunities on one site, the landowner may work with an expert and/or ecologist to determine the most suitable habitat to be created in this location. The habitat to be created also depends upon availability of resources and funding to carry out works.

All sites and areas shown on the Measures and ACB maps are subject to existing land use and ownership constraints, and any prevailing constraints or conditions on site, such as presence of Scheduled Monuments and other historical feature,

¹⁰ Making Space for Nature: A review of England’s Wildlife Sites and Ecological Network (2010) -

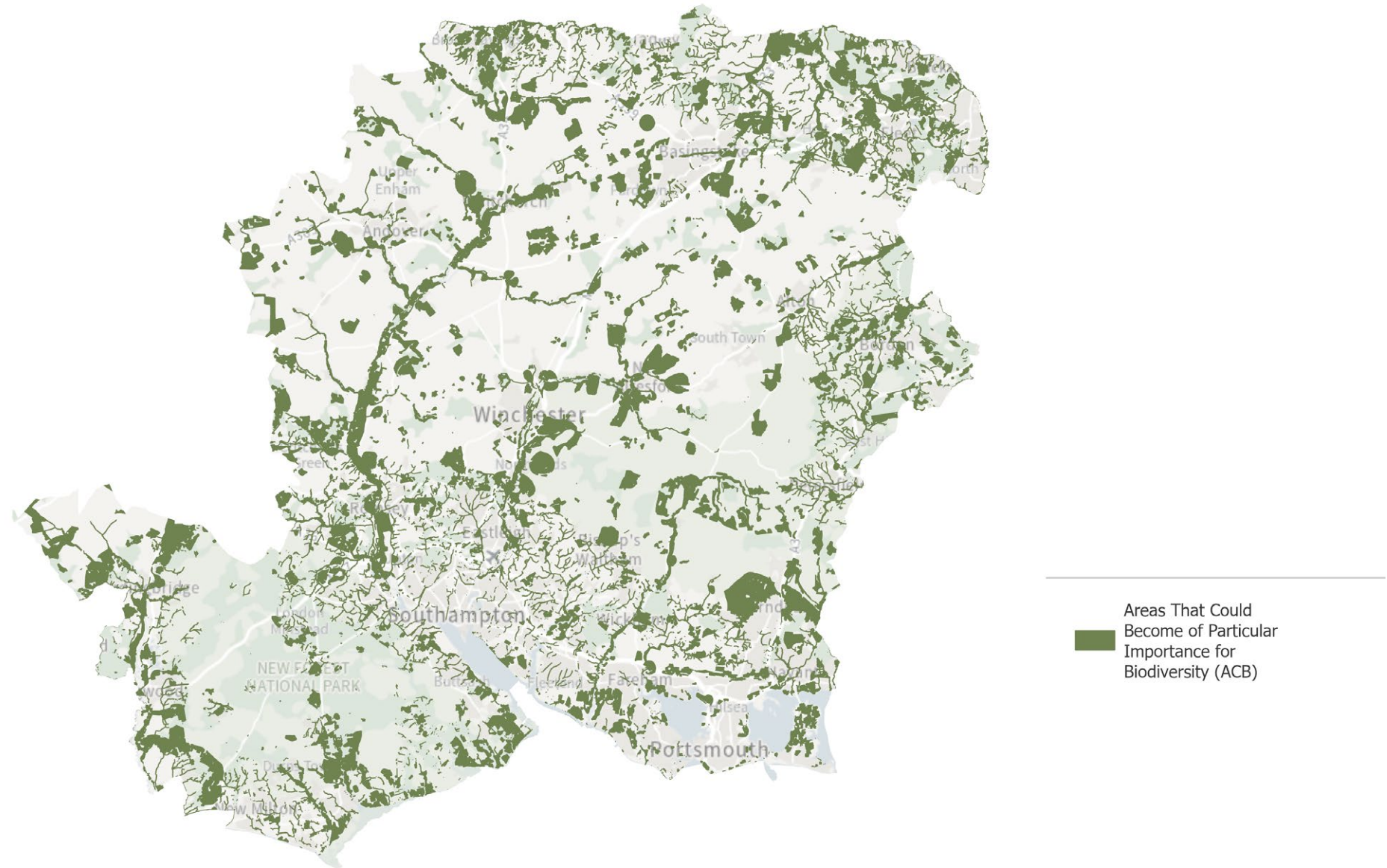
https://webarchive.nationalarchives.gov.uk/ukgwa/20130402170324mp_/http://archive.defra.gov.uk/environment/biodiversity/documents/201009space-for-nature.pdf

or being within an existing scheme. Therefore, inclusion on the ACB map does not automatically guarantee that it is possible to create that habitat in these areas. Maps can only be based on best available evidence. Any potential habitat creation schemes will need thorough investigation and appropriate consent.

The ACB map is provided in Figure 2.13, below. The map is also available for viewing in more detail on the LNRS for Hampshire website¹¹.

11 LNRS for Hampshire Website - <https://www.hants.gov.uk/landplanningandenvironment/nature-recovery-hampshire/hampshire-strategy>

Map 2.12: Areas that could become of particular importance for biodiversity (ACB) map



© Crown copyright Hampshire County Council 2025
© Crown copyright HBIC 2025
© Crown copyright Environment Agency 2025
© Crown copyright Natural England 2025
© Crown copyright and database rights 2025 Ordnance Survey

3. Meeting national environmental objectives

The areas and measures covered on the Measures Map, if delivered over the period of the Local Nature Recovery Strategy, could contribute to the delivery of national targets (Appendix 1: EIP targets) as follows:

National Objective	How the LNRS can contribute	Area
Biodiversity on land - Restore or create in excess of 500,000 hectares of a range of wildlife-rich habitat outside protected sites by 2042, compared to 2022 levels.	Creation of new native woodland that connects to existing ancient semi-natural woodland.	4,534 ha
	Ancient woodland SINCs managed for priority woodland species.	10,850 ha
	Restoration of planted coniferous ancient woodland (PAWs) situated adjacent or within ancient semi-natural woodland.	4,506 ha
	Lowland calcareous grassland restored or created.	8,572 ha
	Other grasslands restored or created including floodplain grazing marsh.	22,215 ha
	Restoring or creating lowland heath and lowland acid grassland.	9,495 ha
	Restoring historic parkland and wood pasture.	15,307 ha
	Saltmarsh restored/created.	916 ha
	Riparian buffers created (10m wide).	7,450 ha
	Total - a contribution of up to 17% towards the national target.	84,000 ha

<p>Protect 30% of land and of sea in the UK for nature's recovery by 2030.</p>	<p>Total area covered by ACB map and APIB map – 36.8%.</p> <p>Area of SINCs covered by measures – 88% of all SINCs which equals 8.2% of Hampshire out of total SINC coverage of 9.2%.</p> <p>SSSIs cover 13% of Hampshire.</p>	<p>141,576 ha</p> <p>31,597 ha</p> <p>50,107 ha</p>
<p>Woodland cover - Increase total tree and woodland cover from 14.5% of land area now to 16.5% by 2050.</p>	<p>Creation of new native woodland (repeated from above). Takes woodland cover in Hampshire to over 19.5%.</p>	<p>4,534 ha</p>
<p>Manage our woodlands for biodiversity, climate and sustainable forestry.</p>	<p>Ancient woodland SINCs actively managed for priority woodland species (repeated from above).</p>	<p>10,850 ha</p>
<p>Biodiversity on land – Halt the decline of species abundance by 2030. Ensure that species abundance in 2042 is greater than in 2022, and at least 10% greater than 2030.</p> <p>Reduce the risk of species' extinction by 2042, when compared to the risk of species' extinction in 2022.</p>	<p>419 species have been selected for actions proposed in the LNRS, most are rare and declining species, with some on the edge of extinction. The majority fall into habitat assemblages and will benefit from the targeted habitat restoration and creation measures listed above.</p> <p>Ancient woodland SINCs actively managed for priority woodland species (repeated from above).</p>	<p>10,850 ha</p>
<p>Improve water quality and availability –</p> <p>Reduce nitrogen (N), phosphorus (P) and sediment pollution from agriculture into the water environment by at least 40% by 2038, compared to a 2018 baseline.</p> <p>Restore 75% of our water bodies to good ecological status.</p>	<p>10m buffers mapped along all water course (excluding SSSIs) to create new habitat.</p> <p>Floodplain grazing marsh mapped for restoration with measures.</p> <p>All in-channel main rivers mapped for measures to improve physical habitat and water quality.</p>	<p>7,450 ha</p> <p>c20,000ha</p>
<p>Reducing the rates of introduction and establishment of invasive non-native species by at least 50%, by 2030.</p>	<p>Measures mapped for control and eradication of INNS along all water courses.</p> <p>Measures mapped for control and eradication of woodland INNS such as rhododendron where it is known to cause a problem in SINC woodland.</p>	

